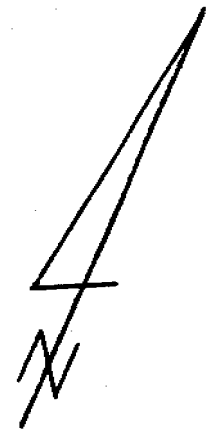
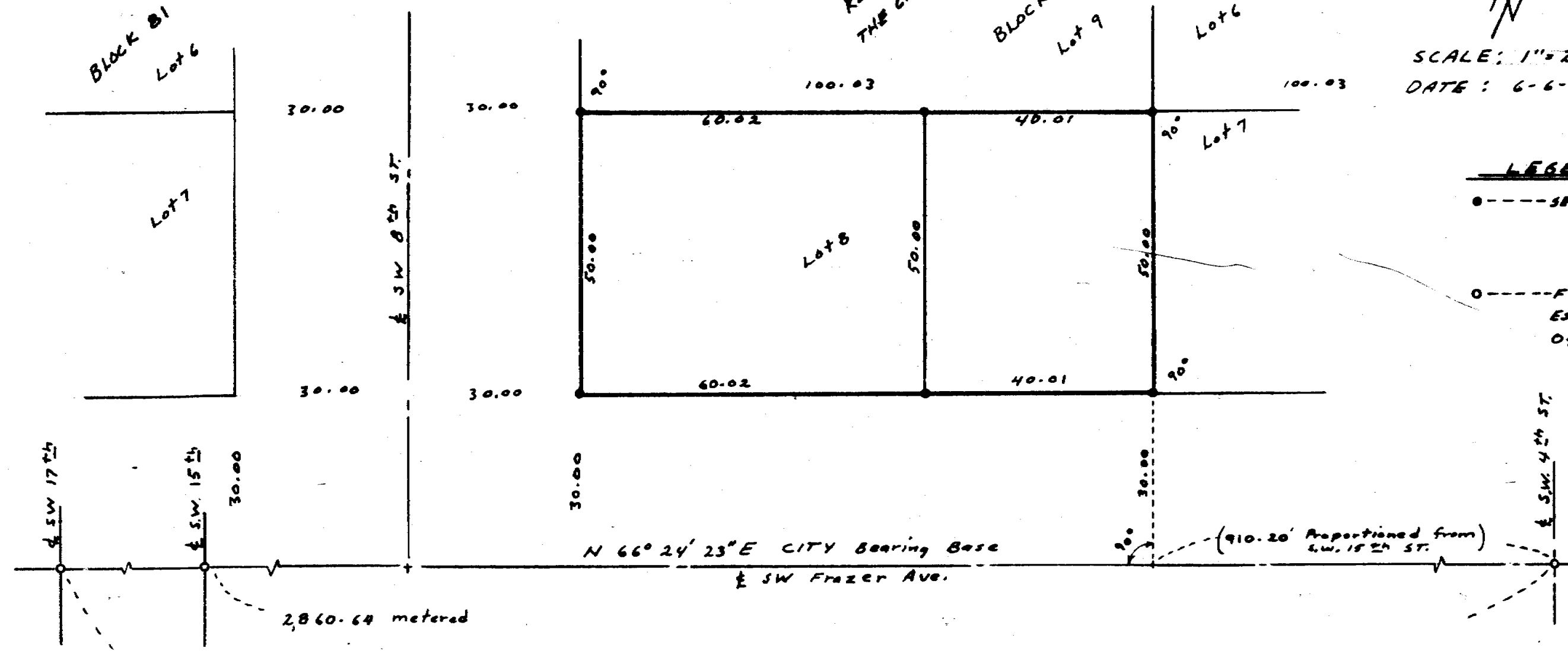


RESERVATION ADDITION TO
THE CITY OF PENDLETON, OR.



SCALE: 1"=20
DATE: 6-6-88



LEGEND

- SET 5/8" x 30" Iron Rebar with Plastic Cap MARKED RLS 1533
- Found Punched RR SPIKE Established by City Engr. Office

REGISTERED
PROFESSIONAL
LAND SURVEYOR

Donald L. Staebler

OREGON
SEPT. 28, 1977
DONALD L. STAEBLER
#1333

3380.71 metered
(3380.54 City)
(3380.00 Plat)

NARRATIVE:

This survey was performed to establish the lot corners of Lot 8, Block 80 in the Reservation Addition to the City of Pendleton, Or. and to divide the said lot 8 into two parcels as shown above. The monuments on Frazer Ave at 4th St., 15th St. & 17th St. as shown above was used for control and supplied to me by the City Engineers Office. The measured distances on Frazer Ave. & were proportioned with the original Plat distances. Bearing base is N 66° 24' 23" E for & of S.W. Frazer, Ave. from City Engr. Office.

LOT SURVEY FOR
FIRST INTERSTATE BANK
OF LOT 8 in BLOCK 80 OF
THE RESERVATION ADDITION TO
THE CITY OF PENDLETON, OR.

BY: DONALD L. STAEBLER
ENGINEER - SURVEYOR
1532 S.W. 41ST.
PENDLETON, OR. 97801
276-7166

RECEIVED BY
Umatilla County Surveyor
Date 6-88
Rec'd By KA
No. 88-21-A

88-21-A