

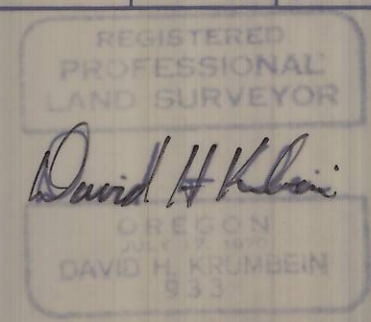
**NARRATIVE:**

The purpose of this survey was to establish the boundaries of Block One of Byers Park Addition. Control was based on a survey by the City of Pendleton for Block 12. The points found were as set in October of 1967. Bearings and distances were as shown on the Original Plat.

- denotes set 5/8" x 30" iron pin with aluminum cap stamped PLS 933
- denotes found nail in road based on City centerline data
- denotes set PK in road based on City centerline data

<b>KRUMBEIN ENGINEERING LTD.</b> ENGINEERS — SURVEYORS — PLANNERS 361 S.E. Second Pendleton, Oregon	Scale 1"=100'	Drn. By MLD	Drng. No. 84-168	Revision 1
	Date 4-24-84	Ckd. By DHH	Job No. 84-47	Revision 2

Survey for  
**MOSGROVE**  
Sec. 2, T2N, R32E, W.M.



RECEIVED BY  
Umatilla County Surveyor  
Date 5/30/84  
Rec'd By bc  
No. 84-64-A

84-64-A