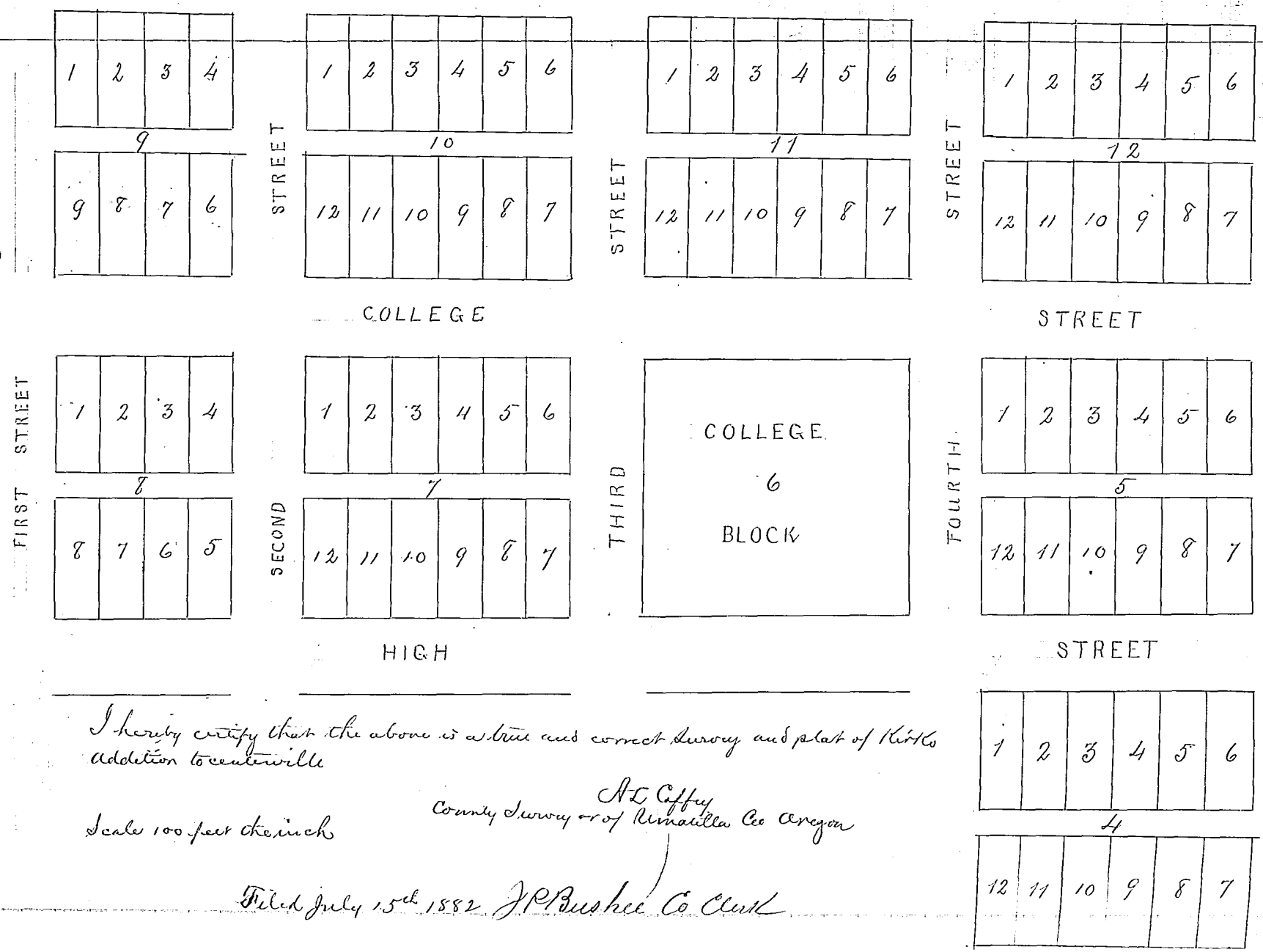


Kirk's 2<sup>d</sup> Addition to the town of Centerville Oregon



I hereby certify that the above is a true and correct survey and plat of Kirk's addition to Centerville

Scale 100 feet to the inch

A. E. Coffey  
County Surveyor of Yamhill Co Oregon

Filed July 15<sup>th</sup> 1882 J. P. Bushnell Co Clerk

