

APPROVALS

CITY OF PENDLETON

CITY OF PENDLETON PLANNING COMMISSION

THE ACCOMPANYING REPLAT IS HEREBY APPROVED THIS

1 DAY OF October, 2012.

[Signature]
CHAIRPERSON *[Signature]*
CITY PLANNER

CITY SURVEYOR

THE ACCOMPANYING REPLAT IS HEREBY APPROVED THIS

19 DAY OF September, 2012.

[Signature]
CITY OF PENDLETON SURVEYOR

UMATILLA COUNTY

UMATILLA COUNTY SURVEYOR

I CERTIFY I HAVE EXAMINED THE ACCOMPANYING PLAT, THAT IT COMPLIES WITH THE LAWS OF THE STATE OF OREGON WITH REFERENCE TO THE FILING AND RECORDING OF SUCH PLATS, AND THEREFORE APPROVE SAID PLAT FOR SIGNATURE BY THE COUNTY COMMISSIONERS OF UMATILLA COUNTY, OREGON.

DATED THIS 5 DAY OF October, 2012.

[Signature]
UMATILLA COUNTY SURVEYOR

UMATILLA COUNTY COMMISSIONERS

THE ACCOMPANYING REPLAT IS APPROVED FOR FILING AND RECORDING IN THE RECORD OF PLATS OF UMATILLA COUNTY BY THE UNDERSIGNED, BY IT'S ORDER.

DATED THIS 9th DAY OF October, 2012.

[Signature]
COMMISSIONER
[Signature]
COMMISSIONER
[Signature]
COMMISSIONER

ASSESSOR AND TAX COLLECTOR

WE, THE ASSESSOR AND THE TAX COLLECTOR OF UMATILLA COUNTY, OREGON, DO HEREBY CERTIFY THAT WE HAVE EXAMINED THE TAX RECORDS RELATIVE TO THE LAND COVERED BY THE ACCOMPANYING REPLAT AND THAT ALL AD/VALOREM AND SPECIAL ASSESSMENTS DUE PURSUANT TO LAW HAVE BEEN ASSESSED AND COLLECTED.

DATED THIS 4th DAY OF October, 2012.

[Signature]
COUNTY ASSESSOR
[Signature]
COUNTY TAX COLLECTOR

OWNERS DECLARATION

WE, REX A. HEIDT AND LAURA L. HEIDT, HUSBAND AND WIFE, OWNERS OF LOTS 87 AND 88, SUNRIDGE ESTATES, PHASE IV, DO HEREBY ESTABLISH AND ACKNOWLEDGE THIS REPLAT AS THE OFFICIAL MAP AND PLAT OF "HEIDT REPLAT", A REPLAT OF SAID LOTS 87 AND 88 OF SUNRIDGE ESTATES, PHASE IV, IN THE CITY OF PENDLETON, UMATILLA COUNTY, OREGON, PREPARED IN ACCORDANCE WITH THE PROVISIONS OF ORS, CHAPTER 92, AS REVISED, AND THE CITY OF PENDLETON AND UMATILLA COUNTY ORDINANCES.

[Signature] *[Signature]*
REX A. HEIDT, OWNER LAURA L. HEIDT, OWNER

ACKNOWLEDGMENT

STATE OF OREGON) SS
COUNTY OF UMATILLA)

THIS INSTRUMENT WAS ACKNOWLEDGED BEFORE ME THIS 19

DAY OF September, 2012.

BY REX A. HEIDT
[Signature]
NOTARY PUBLIC FOR THE STATE OF OREGON

MY COMMISSION EXPIRES: 10-14-16

MY COMMISSION NUMBER: 471536

ACKNOWLEDGMENT

STATE OF OREGON) SS
COUNTY OF UMATILLA)

THIS INSTRUMENT WAS ACKNOWLEDGED BEFORE ME THIS 19

DAY OF September, 2012.

BY LAURA L. HEIDT
[Signature]
NOTARY PUBLIC FOR THE STATE OF OREGON

MY COMMISSION EXPIRES: 10-14-16

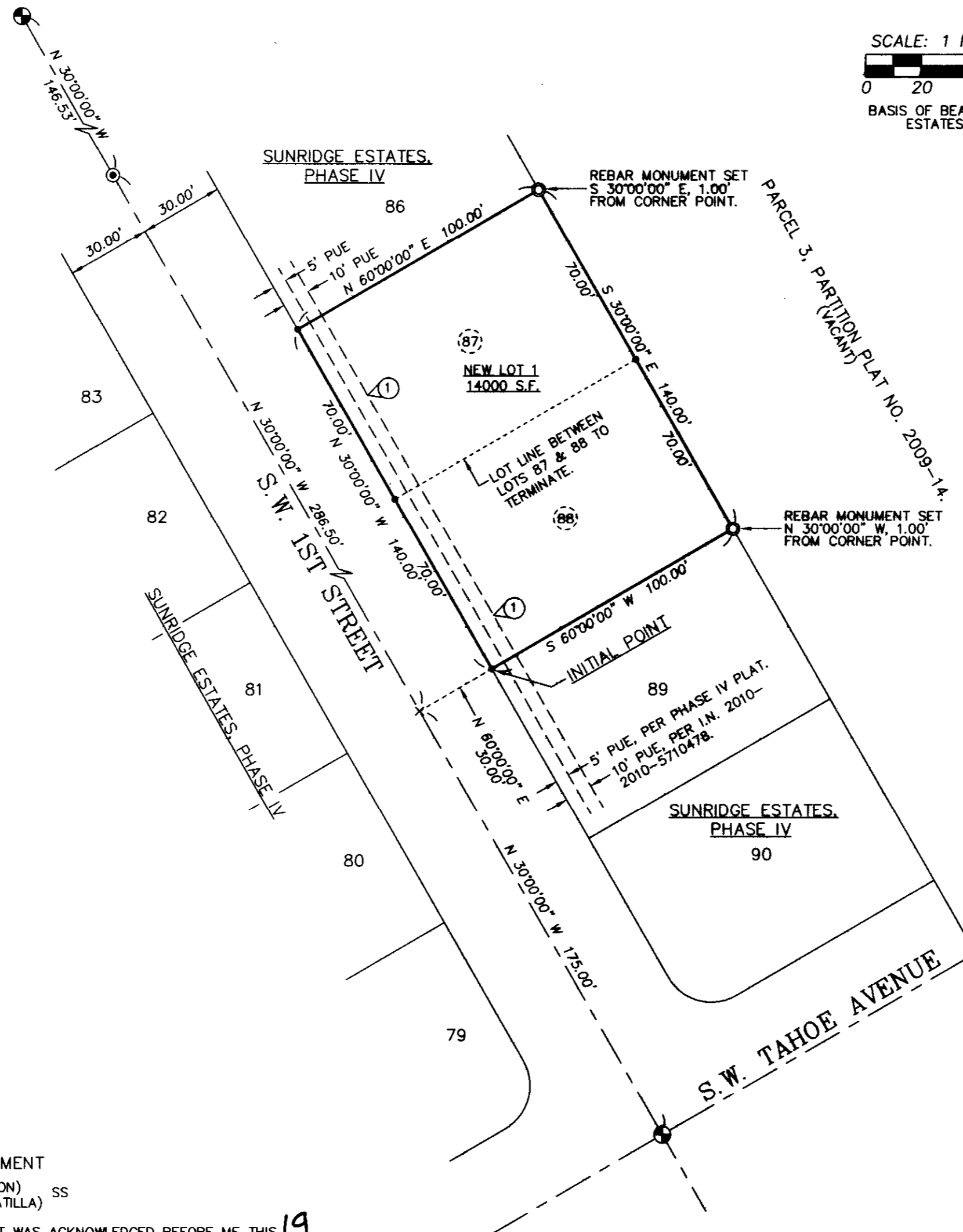
MY COMMISSION NUMBER: 471536

HEIDT REPLAT

A REPLAT OF LOTS 87 AND 88 OF SUNRIDGE ESTATES PHASE IV, CITY OF PENDLETON, UMATILLA COUNTY, OREGON LOCATED IN THE SOUTHWEST QUARTER OF SECTION 14, TOWNSHIP 2 NORTH, RANGE 32 EAST, W.M. AUGUST, 2012



SCALE: 1 INCH=40 FEET
0 20 40 80
BASIS OF BEARINGS: SUNRIDGE ESTATES, PHASE IV.



LEGEND

- ⊙ - FOUND 2" ALUMINUM CAP ON REBAR AT STREET SURFACE, AS SET ON SUNRIDGE ESTATES, PHASE IV OR SUNRIDGE ESTATES, PHASE II.
- ⊙ - 5/8" REBAR REFERRED TO ON SUNRIDGE ESTATES, PHASE IV, IS PAVED OVER. I DID NOT DIG THIS MONUMENT UP.
- - EXISTING 5/8" REBAR WITH RED PLASTIC CAPS FOUND. THESE MONUMENTS WERE SET ON SUNRIDGE ESTATES, PHASE IV.
- ⊙ - SET 5/8" BY 24" REBAR WITH RED PLASTIC CAP MARKED "ORPLS 1106 WA PLS 17372", S 30°00'00" E, 1.00' FROM NE CORNER OF NEW LOT AND N 30°00'00" W, 1.00' FROM SE CORNER OF NEW LOT TO AVOID CORNERS OF CONCRETE RETAINING WALLS. NEW LOT DIMENSIONS ARE SHOWN TO TRUE CORNER POINTS.
- x - CALCULATED POINT ONLY, NOT SET OR FOUND.
- S.F. - INDICATES SQUARE FEET.
- PUE - INDICATES PUBLIC UTILITY EASEMENT.
- (87) - INDICATES FORMER LOT NUMBER, SUNRIDGE ESTATES, PHASE IV.

NOTES:
DIMENSIONS REPORTED ON THIS PLAT, WHICH ARE COMMON WITH THOSE OF SUNRIDGE ESTATES, PHASE IV, ARE IDENTICAL.
① - INDICATES LOCATION OF EXISTING 5 AND 10 FOOT PUBLIC UTILITY EASEMENTS, DEDICATED ON SUNRIDGE ESTATES, PHASE IV SUBDIVISION, AND CREATED IN INSTRUMENT NO. 2010-5710478, UMATILLA COUNTY OFFICE OF RECORDS.

SURVEYORS CERTIFICATE & NARRATIVE

I, WILLIAM R. WELLS, A PROFESSIONAL LAND SURVEYOR IN THE STATE OF OREGON, DO HEREBY CERTIFY THAT I HAVE CORRECTLY SURVEYED AND MARKED WITH LEGAL MONUMENTS, IN ACCORDANCE WITH O.R.S. CHAPTER 92, AS REVISED, AND THE CITY OF PENDLETON DEVELOPMENT ORDINANCE, THE LANDS SHOWN IN THE ACCOMPANYING "HEIDT REPLAT".

THE SURVEY WAS MADE FROM CONTROLLING MONUMENTS ESTABLISHED ON THE PLAT OF SUNRIDGE ESTATES, PHASE IV.

THE SURVEY WAS MADE BY A 2 PERSON CREW A TRIMBLE R8 GEODETIC GPS RECEIVER CONNECTED TO THE OREGON REAL TIME REFERENCE NETWORK. STATE PLANE COORDINATE UNITS MEASURED WITH GPS WERE CONVERTED TO GROUND DISTANCES AND THE BEARING BASE IS SUNRIDGE ESTATES, PHASE IV.

REAL PROPERTY DESCRIPTION:

A TRACT OF LAND LOCATED IN THE SOUTHWEST QUARTER OF SECTION 14, TOWNSHIP 2 NORTH, RANGE 32 EAST, W.M., CITY OF PENDLETON, UMATILLA COUNTY, OREGON, DESCRIBED AS FOLLOWS:

LOTS 87 AND 88 OF SUNRIDGE ESTATES, PHASE IV, AN ADDITION TO THE CITY OF PENDLETON, OREGON, RECORDED IN THE RECORD OF PLATS OF UMATILLA COUNTY AT BOOK 15, PAGE 44, AS INSTRUMENT NO. 2009-5540029, UMATILLA COUNTY PLAT RECORDS.

[Signature]
WILLIAM R. WELLS, PLS

REGISTERED PROFESSIONAL LAND SURVEYOR

[Signature]

OREGON
JULY 22, 1977
WILLIAM R. WELLS
1106
RENEWS 6/30/14

RECORDING INFORMATION, UMATILLA COUNTY OFFICE OF RECORDS:

STATE OF OREGON, COUNTY OF UMATILLA }
I certify that this instrument was received and recorded
ON October 10, 2012
at 9:00 o'clock Am., in the record of PLATS of said County.
BOOK 15 PAGE 70 Slide

OFFICE OF COUNTY RECORDS

By: ...JEAN HEMPHILL...Records Officer

Fees \$ 73.00 No. 2012-5970157

WELLS SURVEYING
1 SW NYE AVE SUITE B
P.O. BOX 1696
PENDLETON, OR 97801
PHONE: (541) 276-6362

DATE: 8/12 DR. BY: DMT/WRW
CK. BY: WRW NO: 12-1391

PROJECT: \HEIDT2012REPLAT
HEIDT REPLAT
A REPLAT OF LOTS 87 & 88, OF SUNRIDGE ESTATES PHASE IV, AN ADDITION TO THE CITY OF PENDLETON.

LOCATED IN THE SW QUARTER OF SECTION 14 TOWNSHIP 2 NORTH, RANGE 32 EAST, W.M. UMATILLA COUNTY, OREGON.

I CERTIFY THIS IS AN EXACT COPY OF THE HEIDT REPLAT.

[Signature]
WILLIAM R. WELLS, PLS

RECEIVED BY

Umatilla County Surveyor
Date: 10/12/2012
Rec'd By: *[Signature]*
No.: 12-136-B