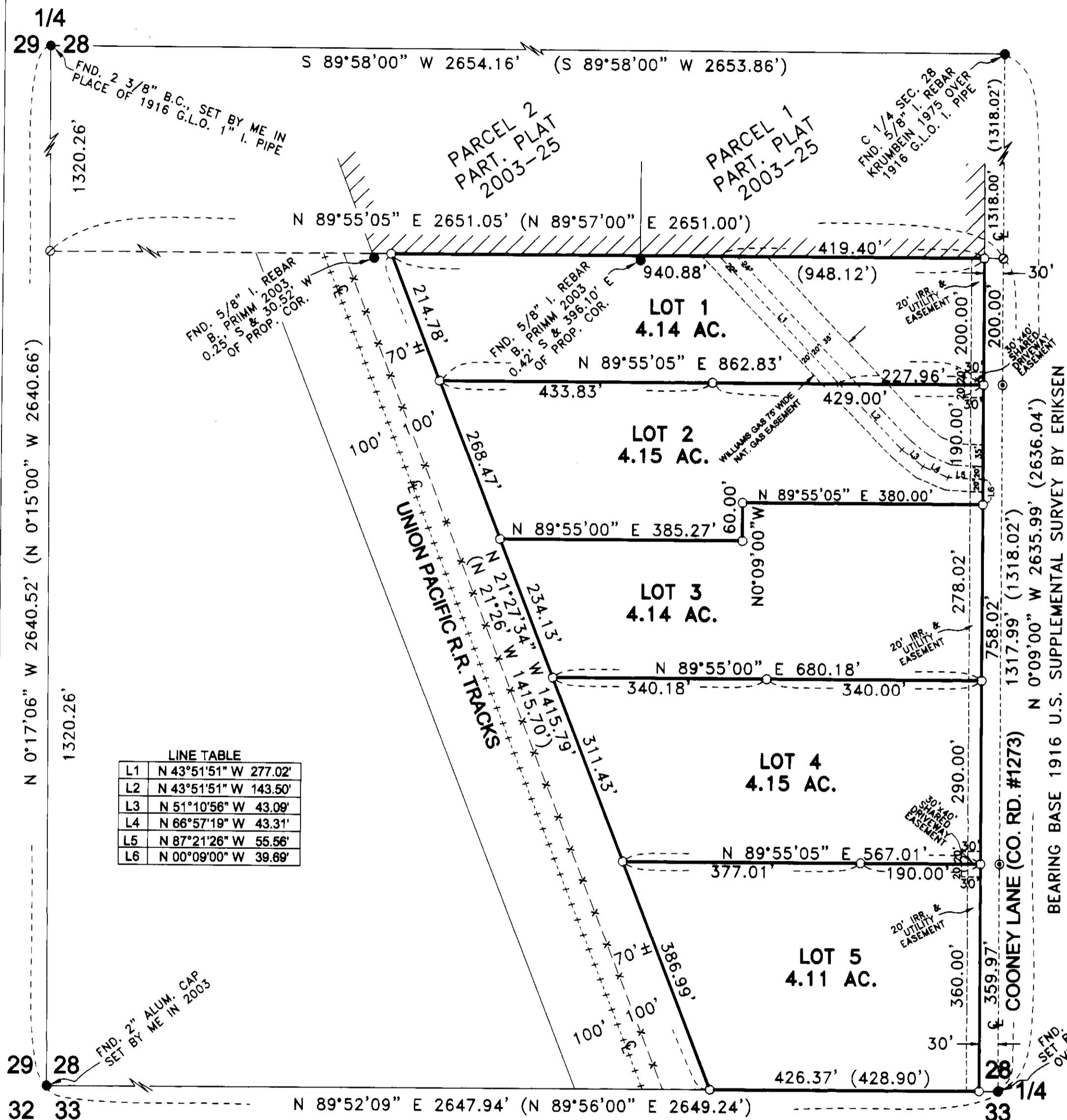


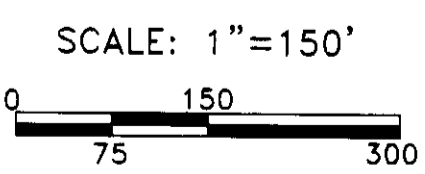
# "STONE RIDGE HEIGHTS"

IN SW 1/4, SEC. 28, T 5 N, R 28 E,  
W.M., UMATILLA COUNTY, OREGON  
#5-049-06



LINE TABLE

L1	N 43°51'51\" W 277.02'
L2	N 43°51'51\" W 143.50'
L3	N 51°10'56\" W 43.09'
L4	N 66°57'19\" W 43.31'
L5	N 87°21'26\" W 55.56'
L6	N 00°09'00\" W 39.69'



**LEGEND:**

- FOUND MONUMENTS AS NOTED
- SET 5/8"x30" IRON REBAR WITH PLASTIC CAP #951
- ⊙ COMPUTED LOCATION FROM 1916 G.L.O. ERIKSEN SURVEY
- ⊙ SET PK NAIL

(000) OF RECORD, 1916 G.L.O. SURVEY BY ERIKSEN

**SURVEYOR'S CERTIFICATE & NARRATIVE:**

I, G. DENNIS EDWARDS AM A REGISTERED SURVEYOR OF THE STATE OF OREGON, AND HAVE MARKED WITH LEGAL MONUMENTS THE LAND SHOWN ON THIS PLAT.

I BASED THIS SURVEY ON A SUPPLEMENTAL PLAT DONE BY ERIKSEN IN 1916. THE MONUMENTS AT THE W 1/4, S 1/4, AND C 1/4 WERE SET IN PLACE OF OR OVER ERIKSEN'S IRON PIPES. TO ESTABLISH THE WEST LINE OF THIS TRACT I TIED THE CENTER OF THE EXISTING RAILROAD TRACTS AND OFFSET IT 100 FEET. WE FOUND ERIKSEN'S IRON PIPE AT THE SW CORNER OF THIS TRACT LYING HORIZONTAL NEAR THE LOCATION OF MY SET IRON REBAR.

DATA WAS COLLECTED WITH A TOPCON HYPER GPS SYSTEM AND THE C 1/4 AND S 1/4 WERE USED TO LOCALIZE THE SYSTEM.

IN A DEED TO DONN'S PLACES, INC. (2004-4730024) THIS TRACT IS DESCRIBED AS FARM UNIT "C" OF THE SW 1/4 OF LOT 8 IN SECTION 28, T 5 N, R 28 E, W.M. IT IS SHOWN AS LOT 8 ON THE SUPPLEMENTAL PLAT OF SECTION 28 SURVEYED BY ERIKSEN IN 1916. I SURVEYED THE SOUTH HALF OF THE SOUTHWEST QUARTER OF SECTION 28 LYING EAST OF THE UNION PACIFIC RAILROAD RIGHT OF WAY. EXCEPTING THE EAST 30 FEET LYING IN COONEY LANE RIGHT OF WAY.

REGISTERED PROFESSIONAL LAND SURVEYOR

*G. Dennis Edwards*

OREGON  
JULY 16, 1971  
G. DENNIS EDWARDS  
9 5 1  
RENEWS 12/31/2007

**APPROVALS:**

UMATILLA COUNTY SURVEYOR  
APPROVED THIS 24 DAY OF Nov., 2006.  
*David H. K...*  
UMATILLA COUNTY SURVEYOR

HERMISTON IRRIGATION DISTRICT  
APPROVED THIS 10<sup>th</sup> DAY OF Nov., 2006.  
*Robert Wilcox*  
MANAGER

UMATILLA PLANNING COMMISSION  
APPROVED THIS 11 DAY OF May, 2006.  
*Tamra Abbott*  
UMATILLA COUNTY PLANNING DIRECTOR

UMATILLA COUNTY COMMISSIONERS  
APPROVED THIS 11<sup>th</sup> DAY OF December, 2006.  
*Janice D. Roberts*  
CHAIRMAN

*William B. Howell* *Luick M. Holman*  
COMMISSIONER COMMISSIONER

UMATILLA COUNTY ASSESSOR & TAX COLLECTOR  
TAXES ARE PAID IN FULL  
APPROVED THIS 1<sup>st</sup> DAY OF December, 2006.

*Paul Chalmers* *Tara M. Duke* *Ronda Schantz* *Brittany Finley*  
UMATILLA COUNTY TAX ASSESSOR UMATILLA COUNTY TAX COLLECTOR UMATILLA COUNTY TAX COLLECTOR DUPLY

**OWNER'S DECLARATION:**

I, THE OWNER OF THE ABOVE DESCRIBED LAND, HEREBY DECLARE THAT I HAVE CAUSED THIS PLAT TO BE PREPARED.

I ACKNOWLEDGE THE WILLIAMS NATURAL GAS LINE EASEMENT AS SHOWN AND THE RIGHT OF WAY FOR COONEY LANE.

I HEREBY DEDICATE A 20 FOOT PUBLIC UTILITY AND IRRIGATION EASEMENT ALONG THE EAST LINE OF THIS PROPERTY AS SHOWN.

I ALSO HEREBY DEDICATE A 30 FOOT BY 40 FOOT ACCESS EASEMENT AT THE EAST CORNER COMMON TO LOTS 1 AND 2 AND THE EAST CORNER COMMON TO LOTS 4 AND 5 AS SHOWN FOR A JOINT ACCESS EASEMENT TO BE SHARED BY SAID LOTS.

*Donald G. Walls*  
DONALD G. WALLS, PRESIDENT OF  
DONN'S PLACES INC., AN OREGON CORP.  
OREGON U.O.E.

STATE OF OREGON }  
COUNTY OF UMATILLA }  
ACKNOWLEDGED BEFORE ME ON THIS  
26 DAY OF November, 2006  
*Patricia Johnson*  
NOTARY PUBLIC FOR OREGON  
*Patricia Johnson*  
PRINTED NAME  
COMMISSION NO. 411148  
MY COMMISSION EXPIRES 10/22/10

STATE OF OREGON, }  
COUNTY OF UMATILLA }  
I certify that this instrument was received and recorded  
ON May 11, 2007  
at 10:00 o'clock Am., in the record of  
PLATS of said County.  
BOOK 15 PAGE 25 Slide

**OFFICE OF COUNTY RECORDS**  
By: JEAN HEMPHILL Records Officer  
Fees \$ 50.00 No. 2007-5190393

JOB #S0303058  
EDWARDS SURVEYING P.O. BOX 763  
541-567-3336 HERMISTON, OREGON 97838  
DRAWN BY JMC

THIS IS AN EXACT COPY: *G. Dennis Edwards*  
G. DENNIS EDWARDS

RECEIVED BY  
Umatilla County Surveyor  
Date 5-07  
Rec'd by KK  
No. 07-166B