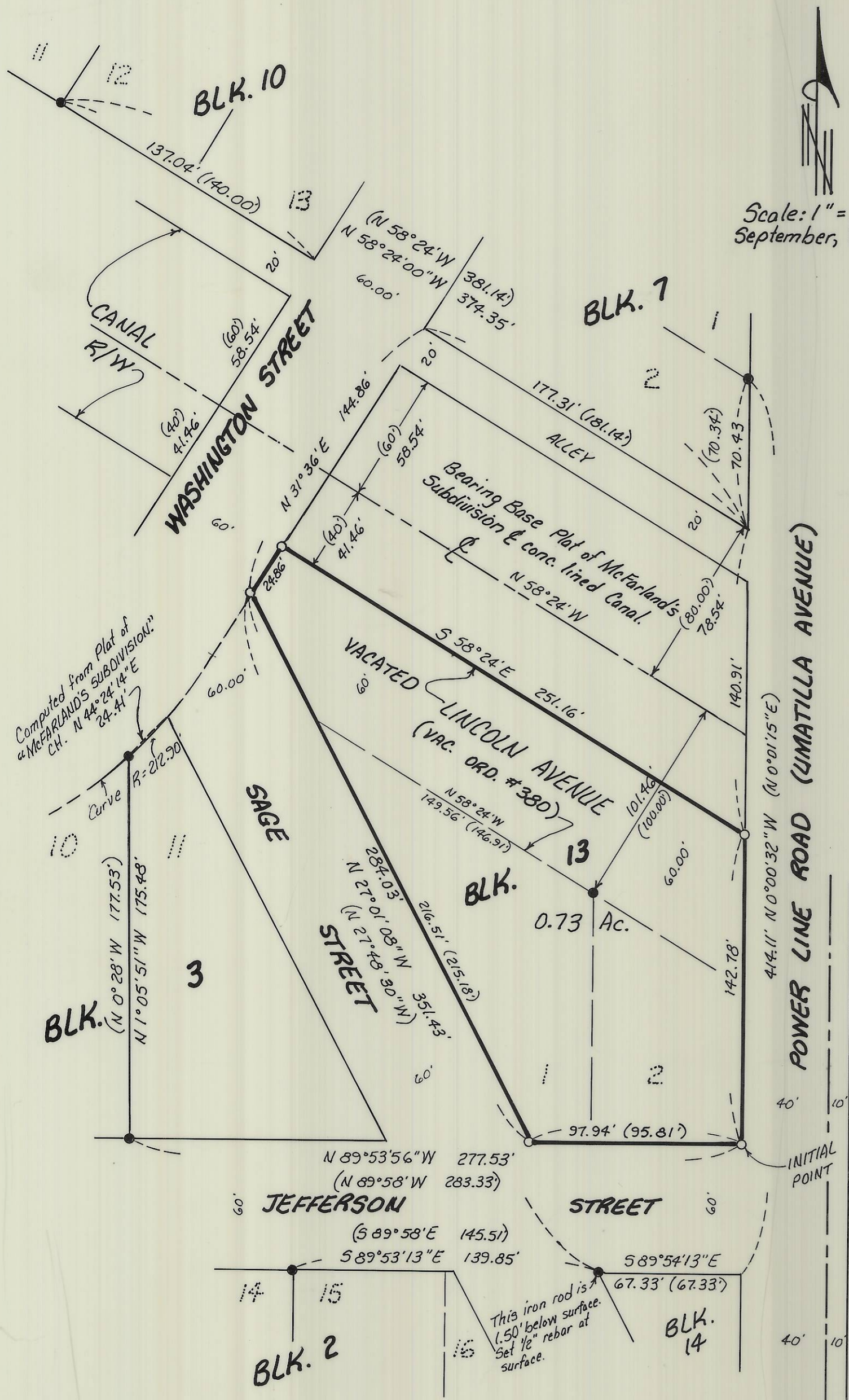


REPLAT OF BLOCK 13, "McFARLAND'S SUBDIVISION"

In the City of Umatilla, Umatilla County, Oregon
In SW 1/4, SW 1/4 Section 17, T5N, R28E, W.M.



Scale: 1" = 50'
September, 7, 1994

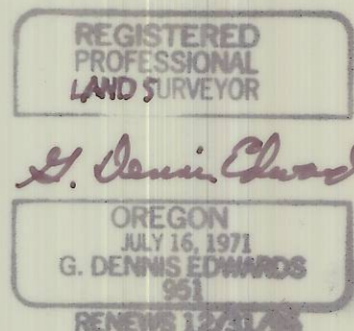
LEGAL DESCRIPTION:

Lots 1 and 2, Block 13, "McFARLAND'S SUBDIVISION," in the City of Umatilla, Umatilla County, Oregon. Also that portion of vacated Lincoln Street lying between Washington Street and Power Line Road which is adjacent to said Block 13.

SURVEYOR'S CERTIFICATE:

I, G. Dennis Edwards, am a registered Surveyor of the State of Oregon and have correctly surveyed and marked with legal monuments the land shown on this Replat. The purpose of this survey is to combine Lots 1 and 2, Block 13, "McFARLAND'S SUBDIVISION" with vacated Lincoln Street (Vacate Order #380) to create one building lot. I found seven smooth 1/2" iron rods which were set by Storms in the original 1949 survey. Their locations do not match the locations shown on the Plat. Distances between them vary up to 7 feet from what is on the Plat. I tried the concrete lined canal which is shown on Storms' Plat and used that for my bearing base. I then retraced his survey and set the corners of this Plat including a 5/8" x 30" rebar with plastic cap stamped Edwards LS 951, driven 6 inches below the surface at the Southeast corner of Block 13 which is the Initial Point of this Replat. There are no water rights on this property.

G. Dennis Edwards
G. Dennis Edwards, PLS 951



OWNER'S DECLARATION:

We, the owners of the land shown hereon, hereby establish this Plat as the official Map and Plat of the "REPLAT OF BLOCK 13, 'McFARLAND'S SUBDIVISION'."

Paul L. Fischer Anna Lou Fischer
Paul L. Fischer Anna Lou Fischer

State of Oregon }
County of Umatilla } ss

Subscribed and sworn before me on this 21st day of September, 1994.

Linda Dettmann
Notary Public for Oregon
My commission expires 11/4/97



APPROVALS:

UMATILLA COUNTY SURVEYOR:

I, Umatilla County Surveyor, do hereby certify that I have examined the accompanying Replat, that it complies with the laws of the State of Oregon with reference to the filing and recording of such Replats, and I therefore approve said Replat for the approval of the County Commissioners of Umatilla County, Oregon. Dated this 6 day of October, 1994.

David H. Kabein
Umatilla County Surveyor

CITY OF UMATILLA:

The City Planning Commission hereby approves and adopts this Replat. Dated this 22 day of September, 1994.

Beth Jane Steens
Planning Commission, Chairman

UMATILLA COUNTY:

COMMISSIONERS:

This is to certify that the accompanying Replat is approved for filing and recording by the undersigned by its order dated this 4 day of November, 1994.

William B. Harold Walter Young
Chairman Commissioner
Emile M. Holman
Commissioner

ASSESSOR & TAX COLLECTOR:

We, the Assessor and the Tax Collector of Umatilla County, Oregon, do hereby certify that we have examined the tax records relative to the land covered by the accompanying Replat and that the monies due for the State and County taxes and assessments that could constitute a lien on said land have been paid and we hereby approve said Replat. Dated this 300 day of November, 1994.

Rob Clark Rhonda Schultz
Assessor Tax Collector

LEGEND:

- Found 1/2" Iron rod. Storms, 1949.
- Set 5/8" x 30" rebar with plastic cap #951.
- (000) of Record. Original Plat of "McFARLAND'S SUBDIVISION" by C.H. Storms in 1949.

This is an exact copy.

G. Dennis Edwards

Prepared By:
Edwards Surveying P.O. Box 763
503-567-3336 Hermiston, Oregon 97838
Drwn. By: S.K.B.

RECEIVED BY

Umatilla County Surveyor
Date 1-95
Rec'd By KK
No. 95-09-B

STATE OF OREGON, }
COUNTY OF UMATILLA, } ss
I, Thomas L. Groat, County Clerk, certify that this instrument was received and recorded
ON NOV 04 1994
11:19 A.
at o'clock M. in the record
of Town Plats of said County in
Book Page
..... 13 52
THOMAS L. GROAT
County Clerk
By s/Georgia McNaught Deputy
Fees \$ 15.00 No. 94-200572