

McNary Manor

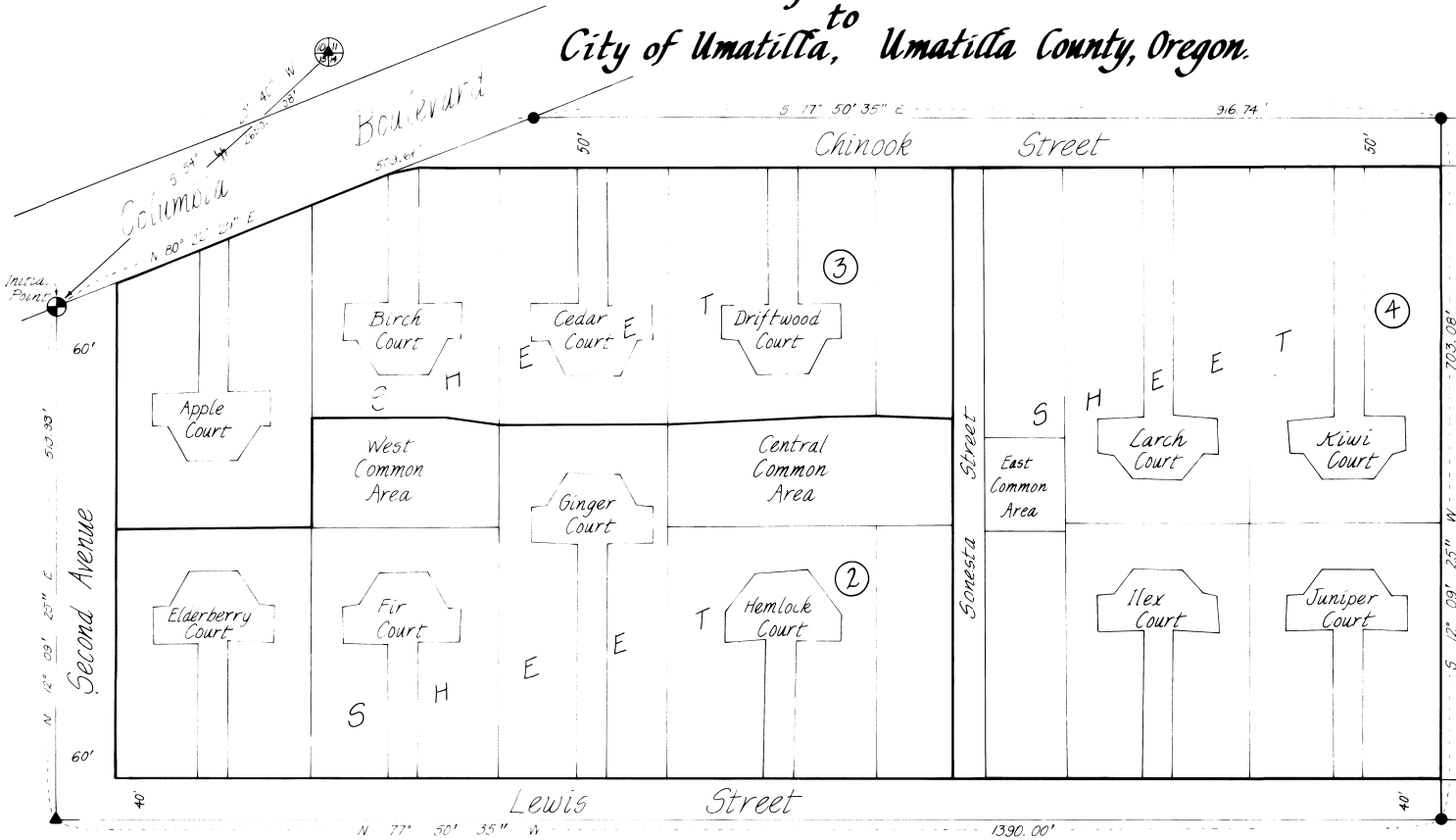
A Planned Unit Development Subdivision - Sheet 1 of 5

to
City of Umatilla, Umatilla County, Oregon.

STATE OF OREGON, } ss
COUNTY OF UMATILLA, }
I, J. Dean Fouquette, Sr., County Clerk,
certify that this instrument was received and
recorded
ON SEP 26, 1984
at 2:33 o'clock P.M. in the record
of Town Plats of said County in
Book Page
13 4
J. DEAN FOUQUETTE, SR.
County Clerk
By Betty Jo Browning, Deputy
Fees \$ 59.35 No 104842

NOTES

- Property Deed Reference:
Deed Book 334, Page 465, Umatilla
County Deed Records.
- Dedicated width of Chinook Street
Right of Way adjacent to the Northerly
Boundary of blocks 1 and 2 is 50 feet.
Lewis Street: Right of Way is 40 feet
adjacent to the Southerly Boundary
of blocks 1 and 2 and 60 feet adjacent
to the Westerly Boundary of block 1.
These dedicated widths conform to
the recommendations and actions of
the Umatilla City Planning
Commission adopted in their
meeting of January 27, 1983, and
correct easement encroachments
to pre existing awalling sites
created by Jerry D. Smith's Public
Road Easement granted to the City
of Umatilla in Book 355, page 533,
Umatilla County Deed Records.
- Walkways referred to in the Dedic-
ation statement on page 5 of 5 refer
to the 6 foot and 10 foot wide
parcels that interconnect the streets,
courts, and common areas.
- A blanket easement to Pacific
Power and Light Company for elec-
tric utilities was granted
September 6, 1973 and recorded
in Book 334, page 547, Umatilla
County Records.



LEGEND

- Found 2 1/2" BC stamped Umatilla County Surveyor at NE corner of Section 15, T4S, R28E, N4M
 - ⊕ Found 5/8" iron rod (Krumbein 1981 Survey) set 6" DIA x 30" concrete monument and brass cap as the Initial Point.
 - ▲ Found 5/8" iron rod
 - Set 5/8" x 30" iron rod with aluminum cap stamped RLS 1242
 - Set 1/2" x 24" iron rod with aluminum cap stamped RLS 1242
- Bearings and distance call around exterior boundary or property.

BASIS OF BEARING

South Boundary of Lewis Street Right of Way determined to be N 77° 50' 35" W as determined in Krumbein 1981 Survey for McNary Mobile Manor.

Scale 1" = 80'
February 8, 1984
Date

Thomas F. Lagier
Surveyor

DRAWN

SACD PRODUCTS
RENDERER

DRAWING NUMBER
PAGE 4

SACD PRODUCTS • NEW YORK, MINNESOTA
REGISTERED PROFESSIONAL ENGINEERS

DRAWING NUMBER
BOOK 13

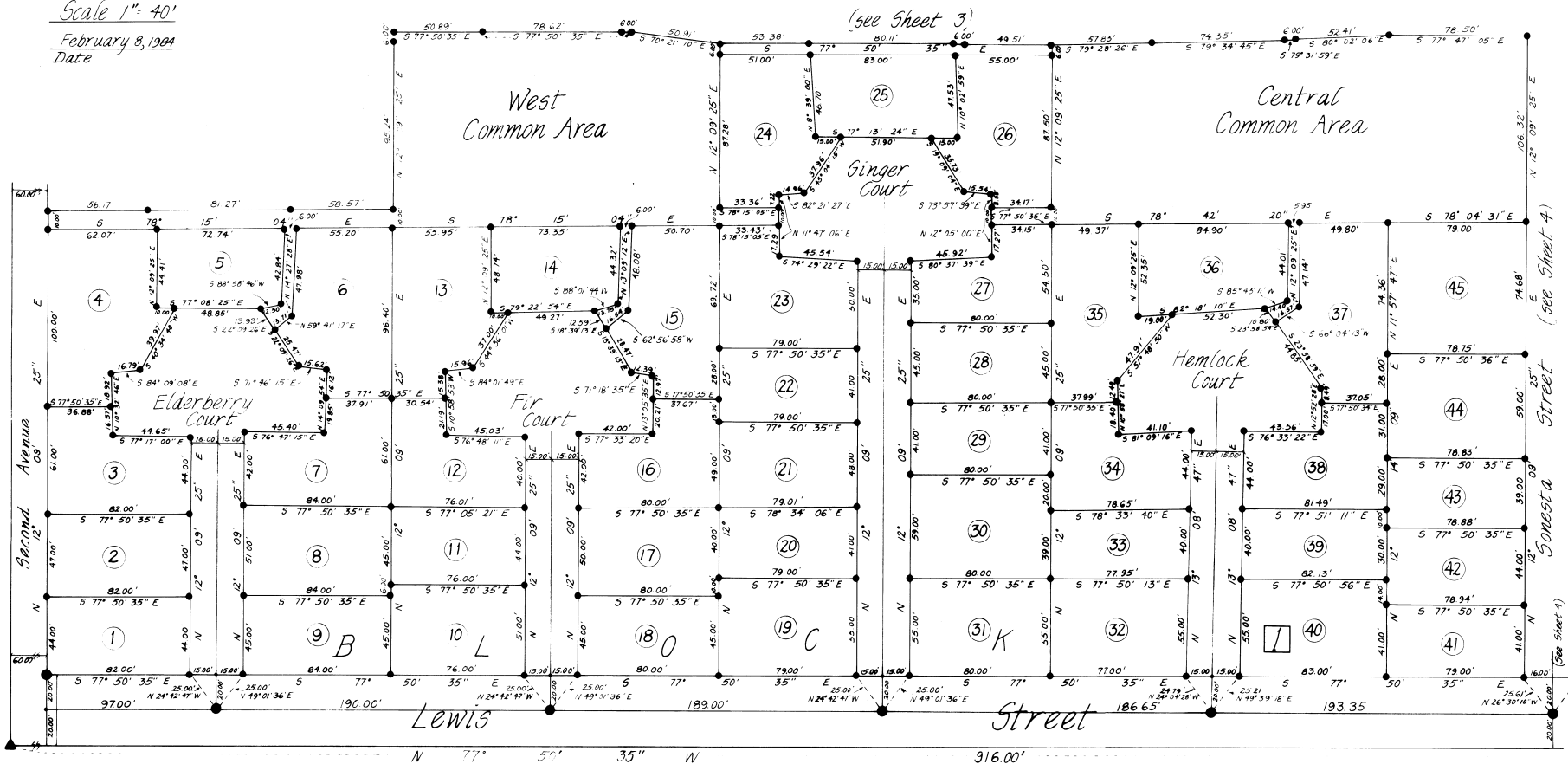
SACD PRODUCTS • NEW YORK, MINNESOTA
REGISTERED PROFESSIONAL ENGINEERS

McNary Manor

A Planned Unit Development Subdivision - Sheet 2 of 5
to
City of Umatilla, Umatilla County, Oregon

Thomas F. Lagier
Surveyor

Scale 1" = 40'
February 8, 1984
Date



DRAWING NUMBER

BOOK 13
PAGE 4A

SACD PRODUCTS • NEW HOPE, MINNESOTA
RECORD BY PART NUMBER 6552
FURNISH NAME OF FIRM, INC. OR IND.

DRAWING NUMBER

BOOK 13

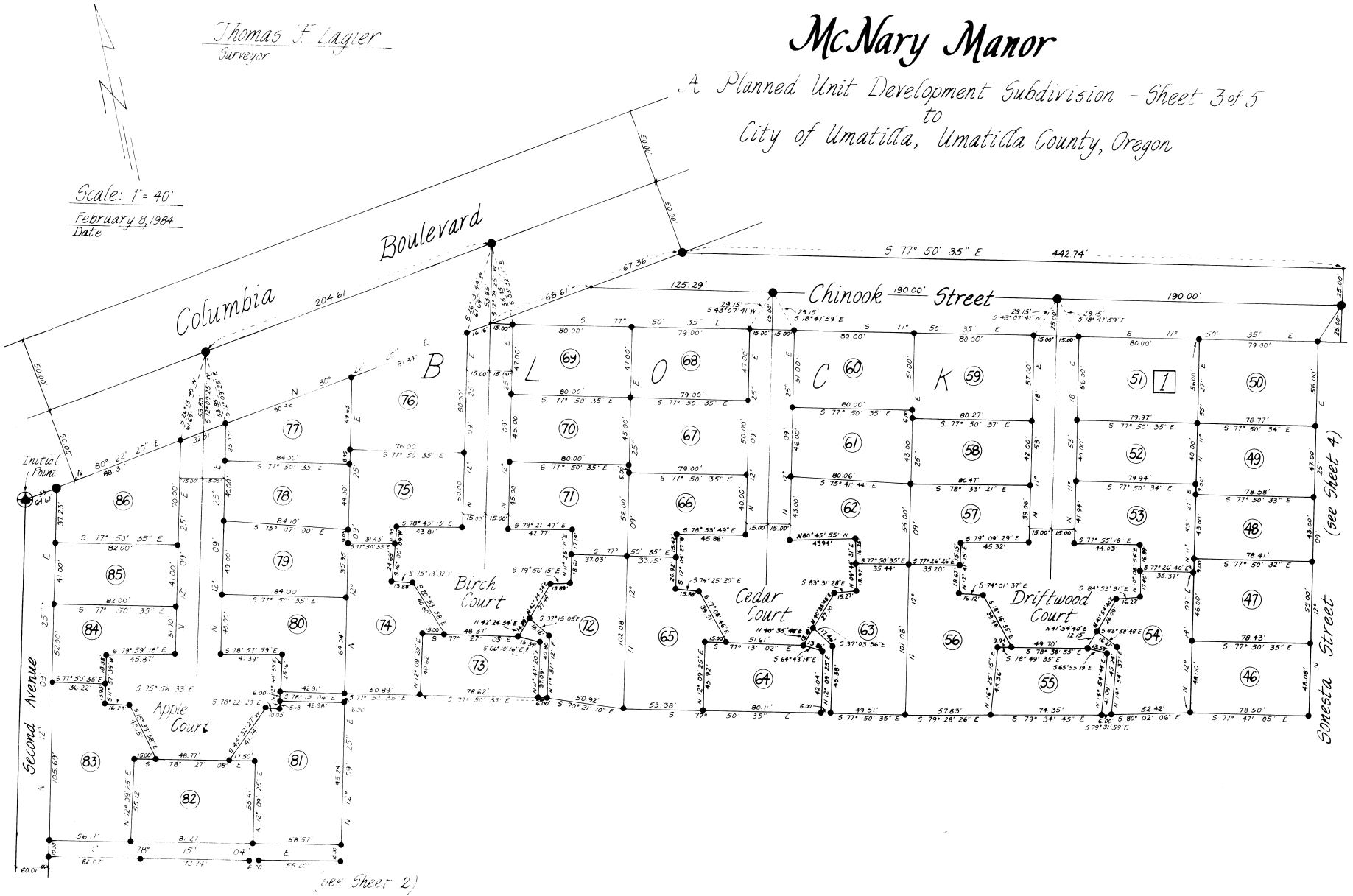
SACD PRODUCTS • NEW HOPE, MINNESOTA
RECORD BY PART NUMBER 6552
FURNISH NAME OF FIRM, INC. OR IND.

Thomas F. Lagier
Surveyor

McNary Manor

A Planned Unit Development Subdivision - Sheet 3 of 5
to
City of Umatilla, Umatilla County, Oregon

Scale: 1" = 40'
February 8, 1984
Date



(see sheet 2)

(see sheet 4)

Thomas F. Lagier
Surveyor

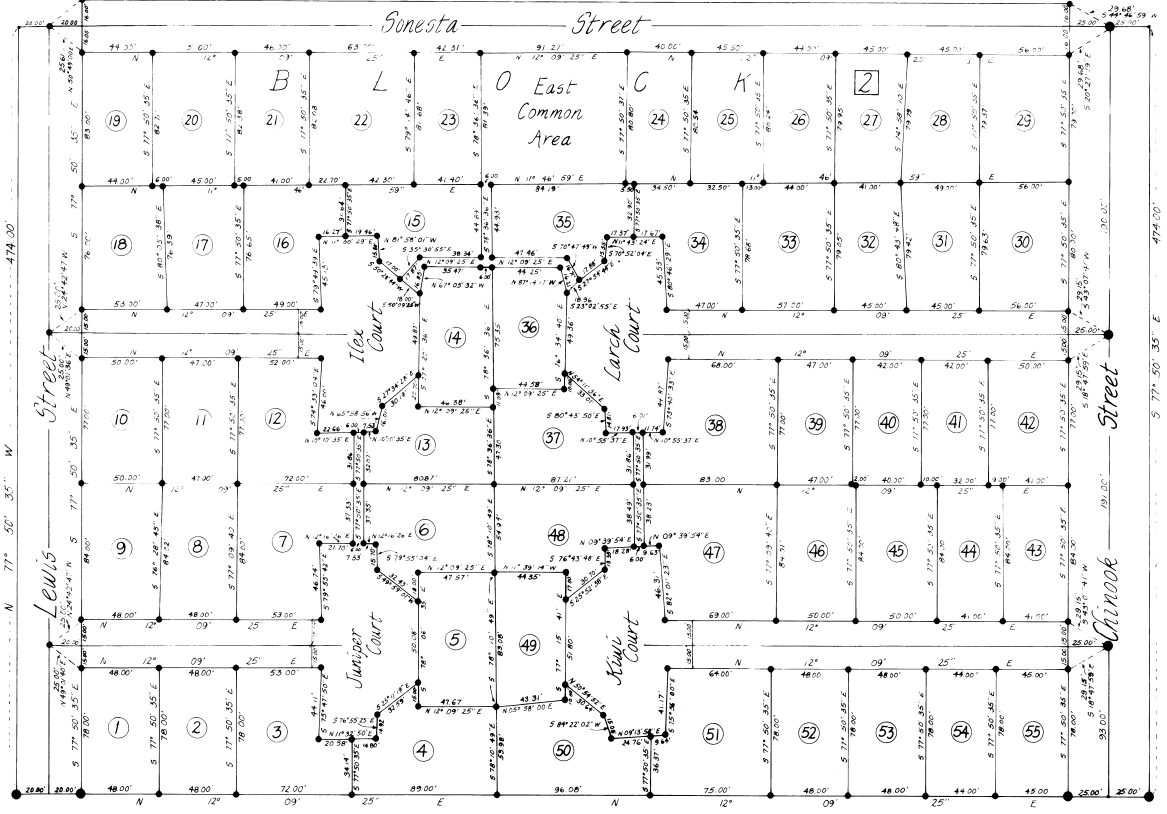
McNary Manor

A Planned Unit Development Subdivision - Sheet 4 of 5
to
City of Umatilla, Umatilla County, Oregon

Scale 1" = 40'
February 8, 1984
Date

(see Sheet 2)

(see Sheet 3)



DRAWING NUMBER
PAGE 4C

DRAWING NUMBER
BOOK 13

McNary Manor

A Planned Unit Development Subdivision - Sheet 5 of 5
to
City of Umatilla, Umatilla County, Oregon

SURVEYOR'S CERTIFICATE

STATE OF OREGON) SS
COUNTY OF UMATILLA)

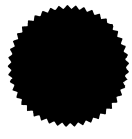
I, Thomas F. Lagier, being first duly sworn, do depose and say that I am a duly registered surveyor of the State of Oregon, and that I have correctly surveyed and marked with legal monuments the land represented on the above plat, the exterior boundaries of which are described as follows:

Commencing at the Northeast corner of Section 15, T5N, R9E, A. 1. N. Thence S 54° 21' 40" W a distance of 2650.08 feet; to an Iron Nail Point of Beginning; said point being the INITIAL POINT:
Thence N 80° 22' 20" E a distance of 309.00 feet;
Thence S 77° 50' 35" E a distance of 216.74 feet;
Thence S 12° 09' 25" W a distance of 303.00 feet;
Thence N 77° 50' 35" W a distance of 1390.00 feet;
Thence N 12° 09' 25" E a distance of 303.00 feet to the INITIAL POINT, containing 21.41 acres in City of Umatilla, Umatilla County, Oregon.



Thomas F. Lagier
Thomas F. Lagier

Be it remembered that on this 23 day of August, 1984, personally appeared before me Thomas F. Lagier, who is known to me to be the identical person described in and who executed the above instrument and who acknowledged to me that he executed the same freely and voluntarily.



Notary Public of Oregon
My commission expires _____

DEDICATION

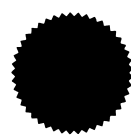
STATE OF OREGON) SS
COUNTY OF UMATILLA)

Be it hereby known by these presents that the undersigned does hereby establish and acknowledge the accompanying plat as the official map and plat of McNary Manor Subdivision, a Planned Unit Development, to the City of Umatilla, Umatilla County, Oregon, and that the undersigned, owner of the land on the accompanying plat does hereby dedicate to the use of the public forever, the streets and courts designated here and clear of encumbrances. The undersigned does hereby grant, bargain, sell and convey unto the City of Umatilla, Umatilla County, Oregon, all areas within the said plat designated as sidewalks and common areas, to be used for and inure to the benefit of the owners of the lots created by said plat, in accordance with the bylaws of said Homeowners Association. The undersigned hereby creates a public easement for the repair, maintenance and replacement of existing sewers, water and all other utilities now in place on said lots, streets and common areas.

CARLSBERG MOBILE HOME PROPERTIES, LTD. - '73,
A limited partnership.

By Thomas F. Lagier
Notary Public

Be it remembered that on this 23 day of August, 1984, personally appeared before me Thomas F. Lagier, who is known to me to be the identical person described in and who executed the above instrument and who acknowledged to me that he executed the same freely and voluntarily.



Notary Public for
STATE _____
My commission expires _____

APPROVALS

CITY OF UMATILLA PLANNING COMMISSION

The accompanying plat is hereby approved by resolution and adopted on this 23 day of Aug, 1984 and approval duly filed.

Markus Johnson, Chairman Thomas F. Lagier, Secretary

COUNTY ENGINEER/SURVEYOR

Approved this 24 day of August, 1984
David H. Klein, Umatilla County Surveyor

UMATILLA CITY COUNCIL

The accompanying plat is hereby approved by resolution and adopted on this 24 day of Aug, 1984 and approval duly filed.
David H. Klein, Mayor

UMATILLA COUNTY ASSESSOR AND TAX COLLECTOR

I, James T. White Sr and I, DL Bratt, respectively Assessor and Tax Collector of Umatilla County, Oregon each hereby certify that we have examined the tax records relative to the land covered by the accompanying plat, and that all monies due for taxes and court fines and assessments that could now constitute a lien on said land have been paid and we hereby approve said plat, dated this 23 day of August, 1984.

James T. White Sr, Assessor DL Bratt, Tax Collector

UMATILLA COUNTY COMMISSION

This is to certify that the accompanying plat is approved for filing and placed in the record of town plats of Umatilla County, Oregon by the undersigned by its order dated the 23 day of August, 1984, and recorded in the County Journal, 29, page 33.

Chairman William A. Frankel Commissioner William A. Frankel Commissioner

UMATILLA COUNTY CLERK

ATTEST: I, J. Dean Fouquette Sr, County Clerk of Umatilla County, Oregon, do hereby certify that the above named were on the date of said order above specified and are now the duly qualified, elected, sworn and acting Chairman and Commissioners of said county; that the signatures are the genuine signatures thereof and the seal hereto affixed is the seal of my office.

J. Dean Fouquette Sr, County Clerk

PAGE 4D

BOOK 14