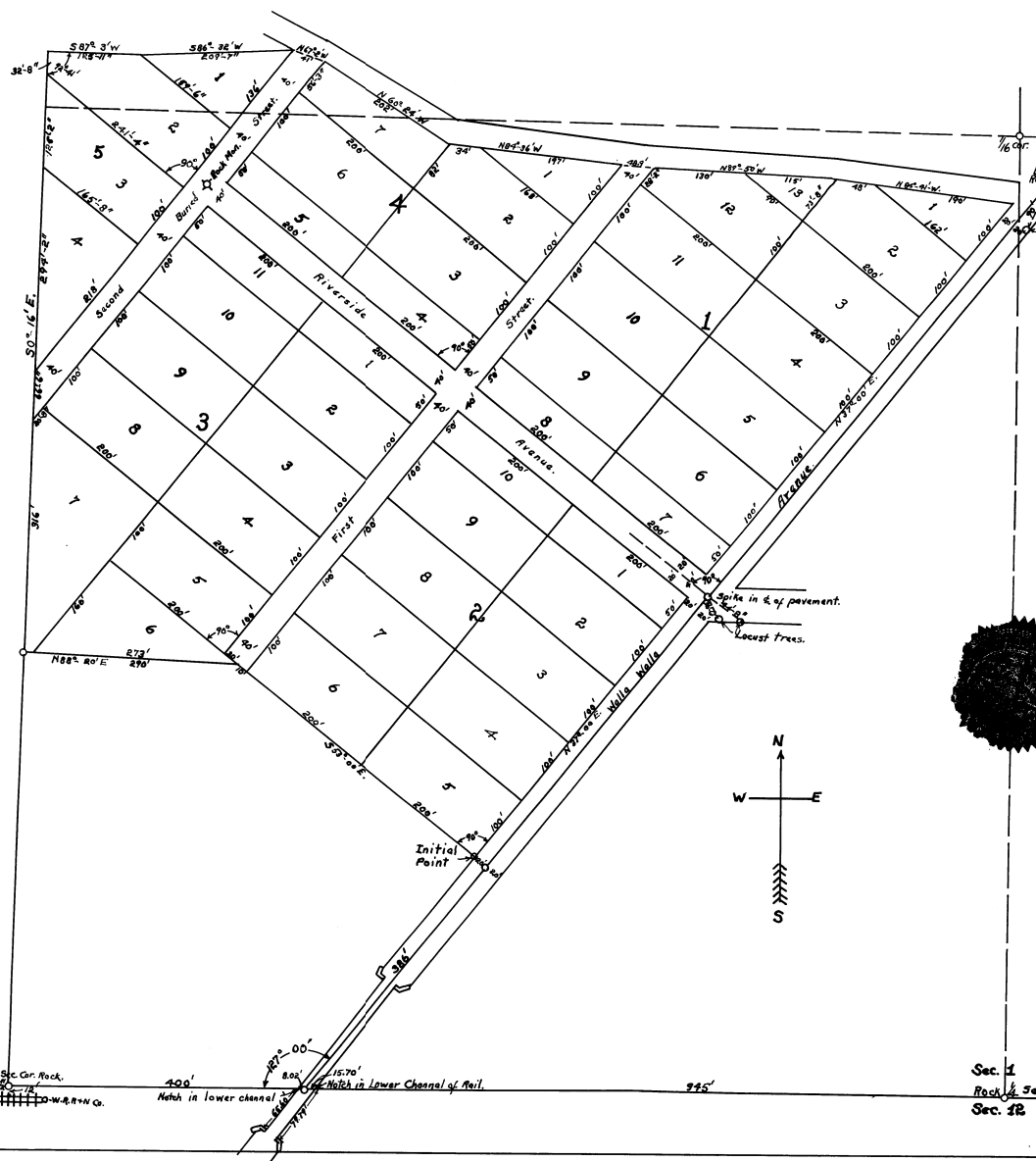


PLAT OF LASSEN SUBDIVISION E 1/4 SW 1/4 Sec. 1 T. 2 R. N. 32 E. W. M.



DEDICATION.
 Know all men by these presents that C. W. Lassen and M. M. Lassen do hereby certify and declare this map and plat to be the map and plat of Lassen Subdivision, a subdivision of a tract of land described in the Certificate of the Surveyor hereon. The Blocks, and lots are of the dimensions indicated on the map and plat and the streets, alleys, avenues and ways are of the width and as delineated on the said map and plat and the said C. W. Lassen and M. M. Lassen do hereby dedicate all said streets, alleys, avenues, roads and ways shown and set out on said map and plat to the use of the public as public highways forever.
 Executed in the presence of two witnesses.
Jas. A. Steer C. W. Lassen <seal>
J. A. Brown M. M. Lassen <seal>

State of Oregon : ss.
 County of Umatilla : ss.
 This certifies that on this 7th day of Jan. 1920 before me, the undersigned, a notary public in the said County and State personally appeared C. W. Lassen and M. M. Lassen who are known to me to be the identical individuals described in and who executed the above dedication and acknowledged to me that they executed the same as their free act and deed, for the uses and purposes therein expressed.
 In testimony whereof I have set my hand and notarial seal this 7th day of Jan. 1920
Jas. A. Steer Notary Public.
 My Commission expires Feb. 23, 1920

SURVEYORS CERTIFICATE.
 State of Oregon : ss.
 County of Umatilla : ss.
 I, Aubrey E. Perry being first duly sworn do solemnly and say that I have correctly surveyed and marked with proper monuments the land represented on the plat of Lassen's Subdivision, 12' x 16' with an X marked on top and buried in the ground and that the said Initial Point is West 945, thence N37°00'E-386; thence N63°00'W-200' from the 1/4 Sec. Corner between Sec. 1-12 T. 2 R. N. 32 E. W. M. Beginning of the Initial Point; thence N37°00'E-1140; thence N84°41'W-238; thence N87°50'W-273.5; thence N85°36'W-231; thence N46°24'W-282.5; thence N 67°24'W-41; thence S86°32'W-209.7; thence S87°3'W-125.4; thence S0°16'E-814.6; thence N88°20'E-290; thence S67°0'W-E-410 to the Initial Point.
Aubrey E. Perry
 Surveyor
 Subscribed and Sworn to before me this 7th day of Jan. - 1920
Jas. A. Steer Notary Public.
 My Commission expires Feb. 23, 1920

APPROVAL.
 All taxes and special assessments on this property appear to have been paid and the plat of said tract is of suitable and convenient character.
H. P. Strains County Assessor.
Aubrey E. Perry County Surveyor.
 Approved this 7th day of Jan. - 1920
Chas. Amable County Judge.
Ed. Anderson County Commissioner.
J. L. Dunning County Commissioner.
 Attest: Rob. Brown County Clerk.

21th March 20
 11:20 u
 5 Plates
 14
 P. L. Dunning

Sec. 1
 Rock & Sec. Cor.
 Sec. 32