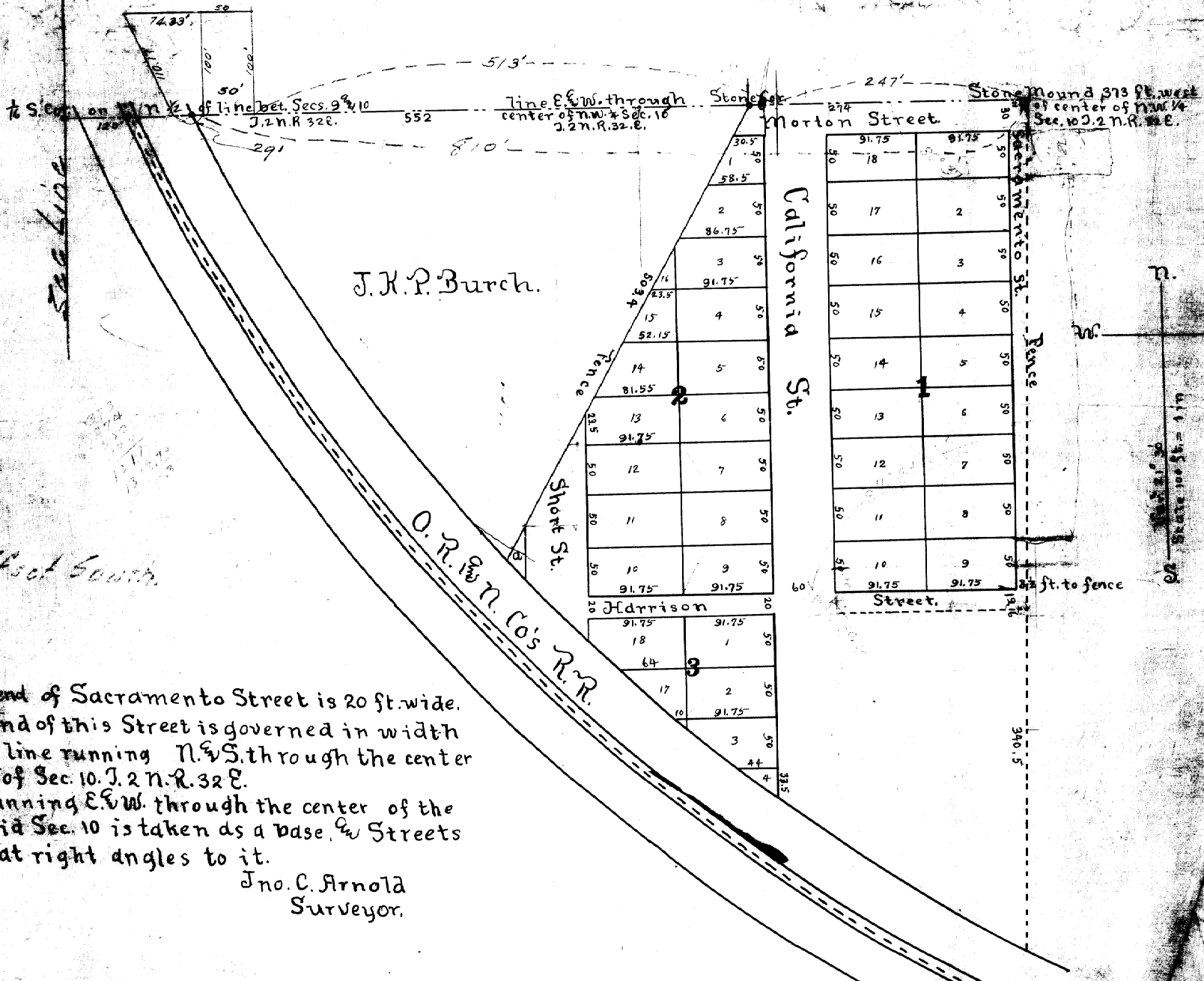


# Edgewood Addition

to  
Pendleton Or.

91.75  
1558.5



J.K.P. Burch.

O.R. & N. Co's R.R.

California St.

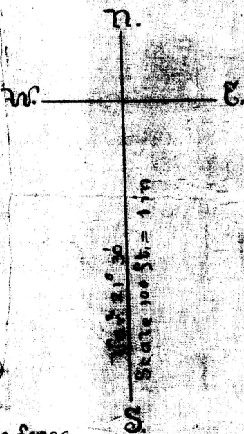
Short St.

Harrison Street

Morton Street

Harrison Street

Stone Mound 373 ft. west of center of NW 1/4 Sec. 10, 2 N.R. 32 E.



6 ft offset South

The North end of Sacramento Street is 20 ft. wide.  
 The South end of this Street is governed in width by the true line running N&S through the center of the NW 1/4 of Sec. 10, T. 2 N. R. 32 E.  
 The line running E&W through the center of the NW 1/4 of said Sec. 10 is taken as a base, & Streets surveyed at right angles to it.

Jno. C. Arnold  
 Surveyor.