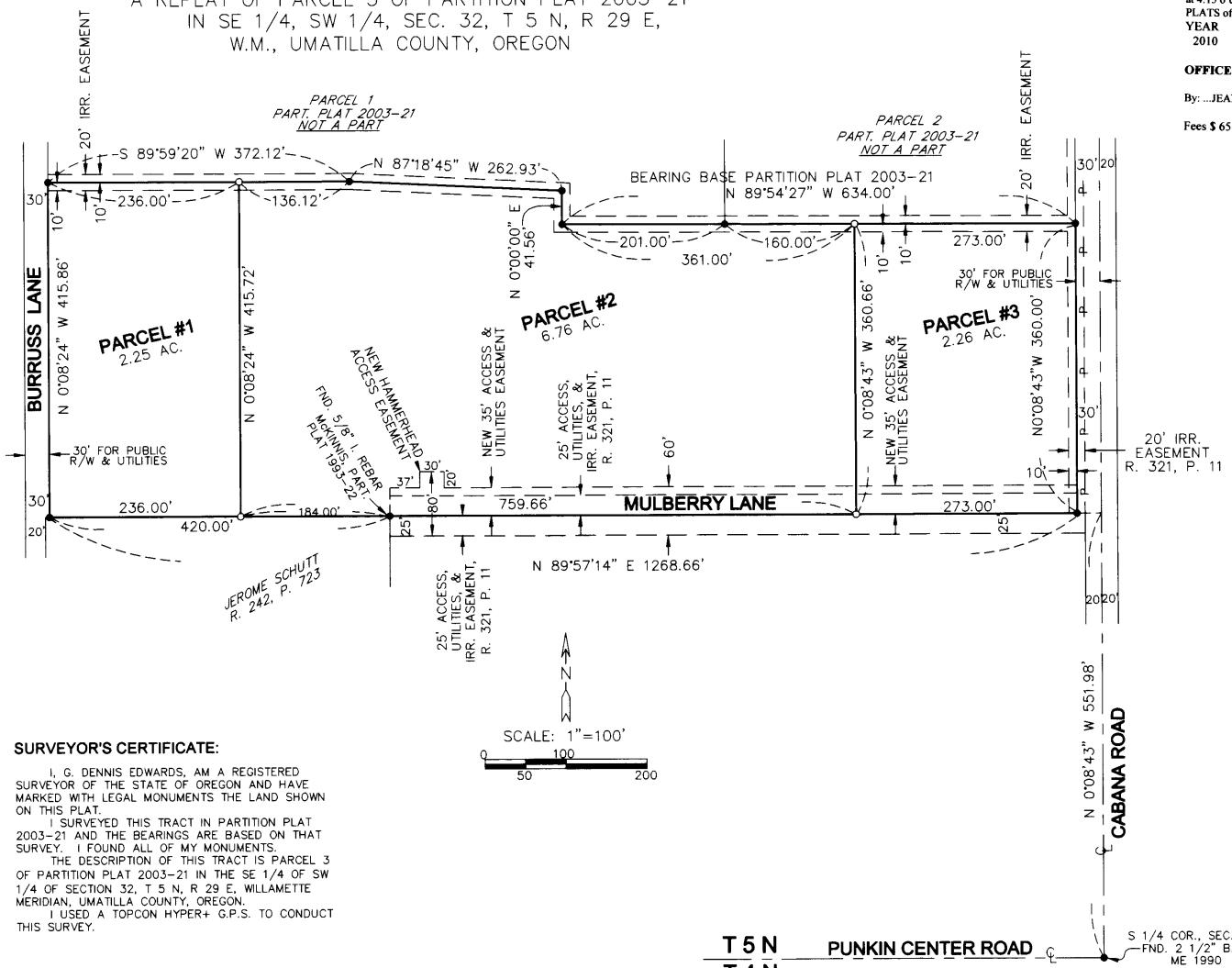


PARTITION PLAT 2010-23

A REPLAT OF PARCEL 3 OF PARTITION PLAT 2003-21
IN SE 1/4, SW 1/4, SEC. 32, T 5 N, R 29 E,
W.M., UMATILLA COUNTY, OREGON



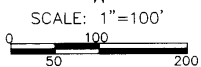
SURVEYOR'S CERTIFICATE:

I, G. DENNIS EDWARDS, AM A REGISTERED SURVEYOR OF THE STATE OF OREGON AND HAVE MARKED WITH LEGAL MONUMENTS THE LAND SHOWN ON THIS PLAT.
I SURVEYED THIS TRACT IN PARTITION PLAT 2003-21 AND THE BEARINGS ARE BASED ON THAT SURVEY. I FOUND ALL OF MY MONUMENTS.
THE DESCRIPTION OF THIS TRACT IS PARCEL 3 OF PARTITION PLAT 2003-21 IN THE SE 1/4 OF SW 1/4 OF SECTION 32, T 5 N, R 29 E, WILLAMETTE MERIDIAN, UMATILLA COUNTY, OREGON.
I USED A TOPCON HYPER+ G.P.S. TO CONDUCT THIS SURVEY.

REGISTERED
PROFESSIONAL
LAND SURVEYOR

G. Dennis Edwards

OREGON
JULY 16, 1971
G. DENNIS EDWARDS
9-5
RENEWS 12/31/2011



LEGEND:

- FOUND 5/8" IRON REBAR SET BY ME IN PART. PLAT #2003-21, UNLESS NOTED OTHERWISE
- SET 5/8"x30" IRON REBAR WITH PLASTIC CAP #951

T 5 N
T 4 N
PUNKIN CENTER ROAD

S 1/4 COR., SEC. 32,
FND. 2 1/2" B. C.
ME 1990

STATE OF OREGON,
COUNTY OF UMATILLA }
I certify that this instrument was received and recorded
ON August 26, 2010
at 4:15 o'clock Pm., in the record of
PLATS of said County.
YEAR NUMBER Slide
2010 23

OFFICE OF COUNTY RECORDS

By: JEAN HEMPHILL, Records Officer

Fees \$ 65.00 No. 2010-5690727

APPROVALS:

UMATILLA COUNTY SURVEYOR

APPROVED THIS 11 DAY OF August, 2010.

David Hicks
UMATILLA COUNTY SURVEYOR

HERMISTON IRRIGATION DISTRICT

APPROVED THIS 10th DAY OF August, 2010.

Chuck Wilson
MANAGER

UMATILLA COUNTY PLANNING DEPARTMENT

APPROVED THIS 26th DAY OF August, 2010.

Jeff Wallack
UMATILLA COUNTY PLANNING DIRECTOR

UMATILLA COUNTY TAX COLLECTOR

TAXES ARE PAID IN FULL
APPROVED THIS 11th DAY OF August, 2010.

Beth Ann Knight
UMATILLA COUNTY TAX COLLECTOR

OWNER'S DECLARATION & DEDICATION:

WE, THE OWNERS OF THE HERE ON DESCRIBED LAND, HEREBY DECLARE THAT WE HAVE CAUSED THIS PLAT TO BE PREPARED.
WE HEREBY ACKNOWLEDGE THE EASEMENTS AND RIGHTS OF WAY AS SHOWN ON PARTITION PLAT 2003-21.

WE HEREBY DEDICATE A HAMMERHEAD AS SHOWN JUST NORTHEAST OF THE NORTHEAST CORNER OF THAT TRACT OF LAND DEEDED TO JEROME SCHUTT ON REEL 242, PAGE 723, UMATILLA COUNTY DEED RECORDS, AND A 35 FOOT WIDE STRIP OF LAND RUNNING FROM SAID SCHUTT CORNER EAST TO CABANA ROAD, AS SHOWN, FOR ACCESS, UTILITIES, AND IRRIGATION FOR THE USE OF PARCELS TWO AND THREE AND FOR THE USE OF THE LANDS LYING SOUTH OF AND ADJACENT TO SAID EASEMENT.

H. Eugene Smith
H. EUGENE SMITH (OWNER)

Jacquelyn R. Smith
JACQUELYN R. SMITH (OWNER)

STATE OF OREGON
COUNTY OF UMATILLA }

BEFORE ME THIS 5TH DAY OF AUGUST, 2010
APPEARED H. EUGENE SMITH AND JACQUELYN R. SMITH, OWNERS,
AND ACKNOWLEDGED THE FOREGOING DEDICATION.

NOTARY PUBLIC FOR OREGON
Mark C. Severson
PRINTED NAME

COMMISSION NO. 439890

MY COMMISSION EXPIRES JUNE 25, 2013

JOB# S0301021B
EDWARDS SURVEYING P.O. BOX 763
541-567-3336 HERMISTON, OREGON 97838
DRAWN BY JMC

THIS IS AN EXACT COPY: *G. Dennis Edwards*
G. DENNIS EDWARDS

Umatilla County Surveyor
Date: 11-10
By: JMC
ID-100-B