

2010-01

PARTITION PLAT No. 2010-01

City of Stanfield, Umatilla County

T. 4N., R. 29E., W.M. Section 32, SW 1/4, NW 1/4 for

William J. Burnett

P.O. Box 365, 550 Hinkle Road
Stanfield, Oregon 97875

LEGAL DESCRIPTION:

Parcel 2 of Partition Plat 2006-33 of Partition Plat Records of Umatilla County,
A portion of Reel 399, Page 0757 Original Burnett Deed

CURVE DATA

- ⑤ CL=18.59'
R=110.81'
Δ=09°36'37"
CDB=N 73°46'16" W
CDL=18.57'
- ⑥ CL=108.54'
R=111.36'
Δ=55°50'51"
CDB=S 83°06'37" W
CDL=104.30'
- ⑦ CL=91.66'
R=200.27'
Δ=26°13'19"
CDB=S 42°04'32" W
CDL=90.85'
- ⑧ CL=149.27'
R=121.27'
Δ=70°31'32"
CDB=N 34°22'25" W
CDL=140.03'



Found Monuments

P = 5/8" Iron Rebar w/ Yellow Plastic Cap
Stamped- PLS LS 48509

P,R = 5/8" Iron Rebar w/ Yellow Plastic Cap
Stamped- PLS LS 48509 (Record by Primm)

H = 5/8" Iron Rod - Harris 1978

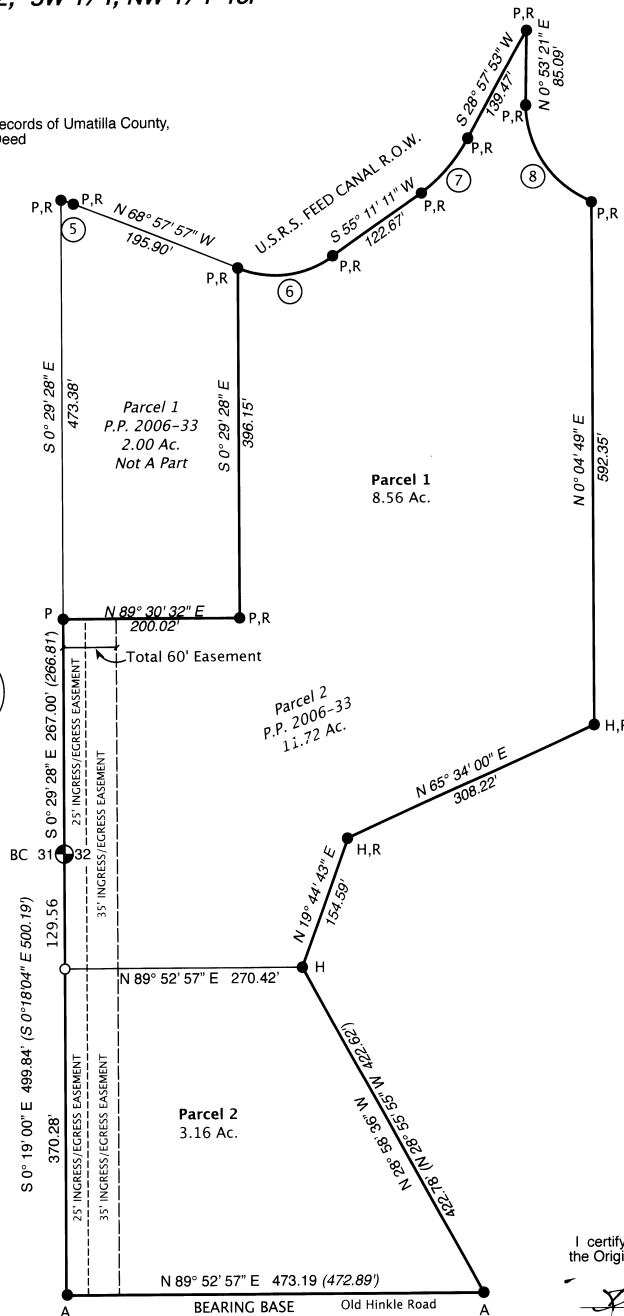
H,R = 5/8" Iron Rod - Harris 1978
(Record by Primm)

A = 5/8" Iron Rebar w/ Yellow Plastic Cap
Stamped- "APA"

BC = Brass Cap - 2 1/2", 1/4 Corner,
PLS 933, 1981

Record Surveys

Partition Plat 2006-33, Primm
LS 48509, 2006



SUVEYORS NARRATIVE & CERTIFICATE:

This Survey is Based on Partition 2006-33 by Primm for Burnett. I used the Primm found Monuments as both Basis of Bearing and the boundary of the subject Parcels. I set a pin at the Northeast corner of Parcel 1 for the location of the North Parcel boundary. This pin, along with the found pin along the East side set by Harris, were used to establish boundaries for the two newly created parcels. The 25' Ingress/Egress easement was dedicated in the previous plat and maintains access to Parcel 1 of P.P. 2006-33. With the added lots, an additional 35' Ingress/Egress Easement is dedicated to form a total of 60' of access egress width. I found small discrepancies in the distances of the Primm survey as it appears that the APA pin in the Southwest corner may have been disturbed by road grading. I noted those differences and maintained the original bearing on the South line. I did not survey the remainder of the New Parcel 1 but used the original calls for the lines as shown by Primm on the Record Partition Plat 2006-33.

I, Ronald V. McKinnis, being a Registered Professional Land Surveyor of the State of Oregon, certify that I have correctly surveyed and monumented the lands portrayed on the face of this plat. I also certify that this plat complies with all provisions of Chapter 92 of the Oregon Revised Statutes.

ACKNOWLEDGEMENT/DEDICATION:

Know All Men By These Presents, that owners of the lands shown on this plat do hereby Dedicate All Easements for the Uses as shown on this Plat. We also hereby establish and acknowledge we have caused this Plat to be created and we recognize this Plat as the Official Map and Plat of the Partition as designated by the County Official, and filed in the County of Umatilla, State of Oregon.

William J. Burnett
William J. Burnett

On this 21st day of January, 2010, William J. Burnett appeared personally before me and is known to me to be the identical individual who executed this plat and acknowledged that he did so freely and voluntarily of his own will.

Before me: Casey J. Hinkley
Notary Public for Oregon
My Printed Name is Casey J. Hinkley
My Commission No. is 429051
My Commission Expires May 24, 2012



I certify that this is a true and exact copy of the Original Plat as filed for William J. Burnett, in Umatilla County, Oregon.

Rev. 01-15-10

APPROVALS:

I certify that I have examined and approved this Partition Plat on this 21st day of January, 2010

Scott Hill
City of Stanfield

I certify that I have examined and approved this Partition Plat on this 22 day of January, 2010

David Hinkle
Umatilla County Surveyor

I certify that I have examined and approved this Partition Plat on this 21 day of Jan, 2010

Jan Kovan Manager
Stanfield Irrigation District

I certify that the Taxes are paid on the Tax lot portrayed in this Partition. 21 day of Jan, 2010

Brian Hinkle
Umatilla County Tax Collector

Umatilla County
Office of County Records
Recording Information

STATE OF OREGON, }
COUNTY OF UMATILLA }

I certify that this instrument was received and recorded

ON January 22, 2010
at 3:30 o'clock P.m., in the record of
PLATS of said County
YEAR 2010 NUMBER 01 Slide

OFFICE OF COUNTY RECORDS

By: JEAN HEMPHILL, Records Officer

Fees \$ 65.00 No. 2010-5610500

LEGEND

- SET MONUMENTS - 5/8" X 30"
Iron Rebar W/ Plastic Caps
Stamped - L.S. #2431
- Found Monuments - as Noted
- ⊙ Calculated Point - Not Set
- ⊙ FOUND SECTION MONUMENTS - AS NOTED
- PARTITION BOUNDARY.
- (000) Record Distances - P.P. 2006-33

SCALE 1" = 100 Ft.
August, 2009



2-2010
JK
10-08-B