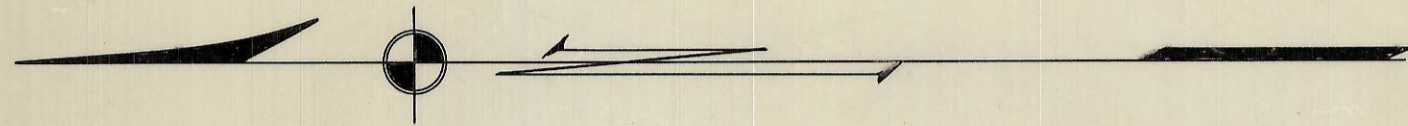


101P

#124



C.F. STRAUGHN.

A D T.
46° 40'
80
309.19'
583.33'

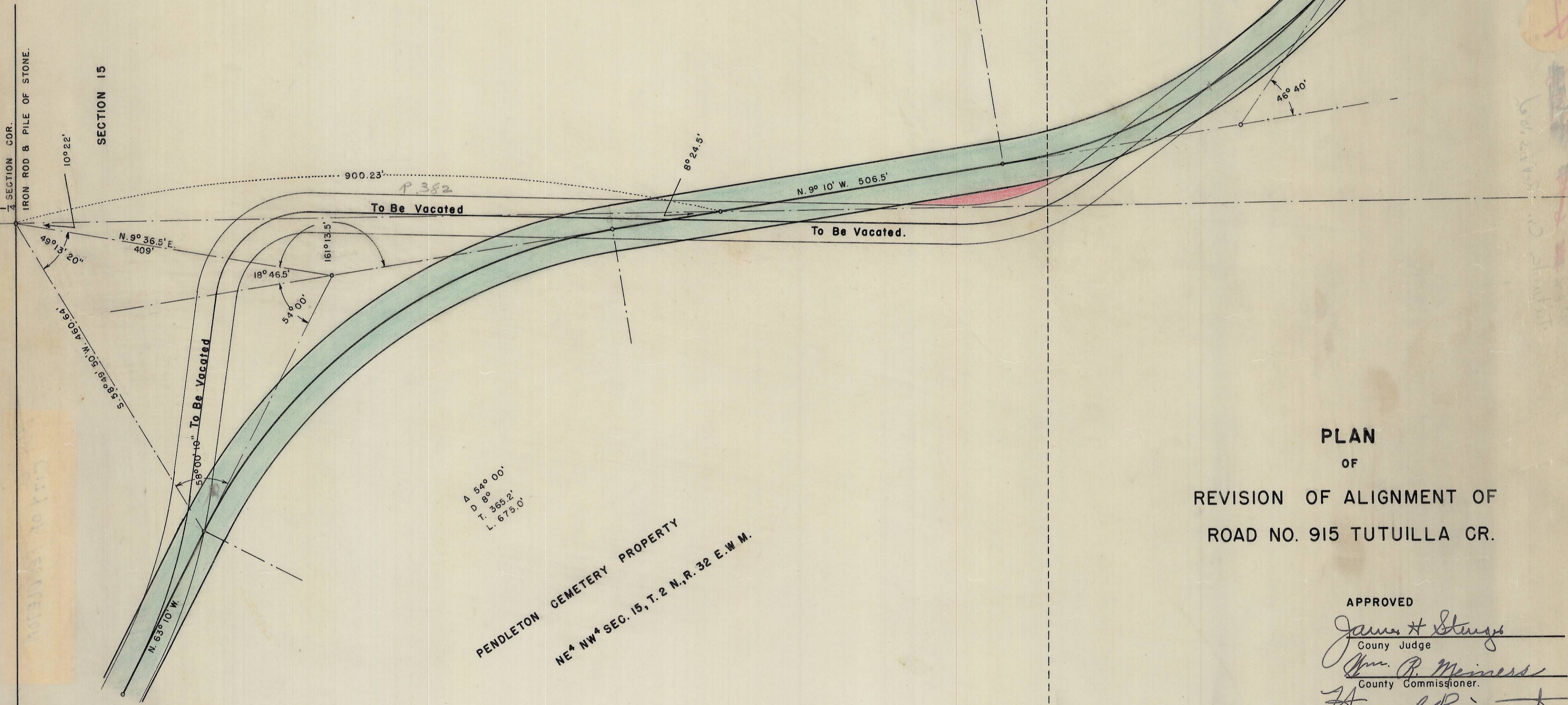
SECTION 10

SECTION COR.

IRON ROD & PILE OF STONE.

SECTION 15

Handwritten notes in red ink: "11/11/1919", "Box 12", "S.V. 1235", "260 12".



A 54° 00'
D 80
T. 369.22'
L. 675.0'

PENDLETON CEMETERY PROPERTY
NE 1/4 NW 1/4 SEC. 15, T. 2 N., R. 32 E., W. M.

PLAN
OF
REVISION OF ALIGNMENT OF
ROAD NO. 915 TUTUILLA CR.

APPROVED

James H. Stuyves
County Judge

Wm. R. Meiness
County Commissioner.

Henry L. Biamont
County Commissioner.

Box 12

