

- LEGEND
- Embankment
 - Excavation
 - Dumped riprap in plan
 - Levee-existing (Site Map & Plan)
 - Dumped riprap in section
 - Levee to be raised (Site Map)
 - Excavation (Site Map)
 - Levee to be repaired
 - Dumped riprap (Site Map)
 - Railroad
 - Right-of-way
 - Utilities
 - Fences

PLAN
SCALE IN FEET
0 800 1600 2400

DEPARTMENT OF THE ARMY
OFFICE OF THE WALLA WALLA DISTRICT ENGINEER
NORTH PACIFIC DIVISION

REAL ESTATE
PENDLETON LEVEES
CHANNEL AND LEVEE RIGHT OF WAY
INDEX MAP
UMATILLA COUNTY, OREGON

DRAWN BY: C.V.C.
TRACED BY: C.V.C.
CHECKED BY: H.A.L.
SUBMITTED BY: *Harvey A. Pender*
CHIEF, INDUSTRIAL SECTION

APPROVED BY: *Walter T. Gowan*
CHIEF, REAL ESTATE DIVISION

APPROVED BY: *[Signature]*
COLONEL, CORPS OF ENGINEERS, PORTLAND DISTRICT ENGINEER

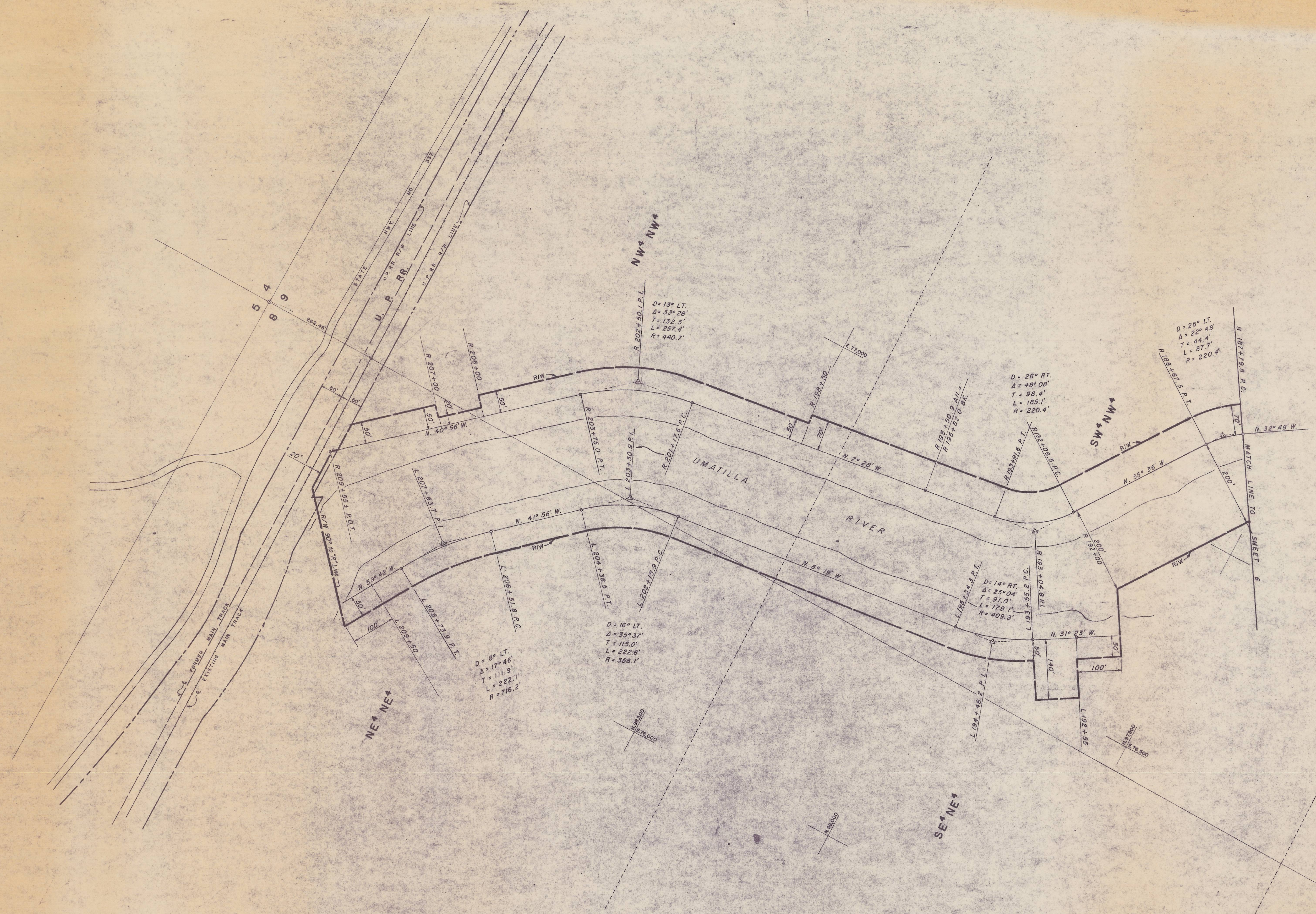
DATE: 15 JAN. 1958

SCALE IN FEET
800 400 0 800 1600

SHEET 1 OF 7 DRAWING NO. WW-RE-179

24-5439

29507 10/15/58 - 3.0.0
 BOX 108



REVISION	DATE	DESCRIPTION	BY
1	5 Sept 1958	Revised levee right of way along U.P. Railroad right of way.	O.M.C.

DEPARTMENT OF THE ARMY
 OFFICE OF THE WALLA WALLA DISTRICT ENGINEER
 NORTH PACIFIC DIVISION

REAL ESTATE
 PENDLETON LEVEES
 CHANNEL AND LEVEE RIGHT OF WAY
 UMATILLA RIVER
 UMATILLA COUNTY, OREGON

DRAWN BY: C.V.C.
 TRACED BY: C.V.C.
 CHECKED BY: H.A.K.
 SUBMITTED BY: *Alfred A. Swanson*
 CHIEF, CADASTRAL SECTION
 RECOMMENDED BY: *Mark R. Tyson*
 CHIEF, REAL ESTATE DIVISION

APPROVED BY: *James J. ...*
 COLONEL, CORPS OF ENGINEERS, DISTRICT ENGINEER
 DATE 15 JAN 1958

SCALE IN FEET
 100' 100' 200'

SHEET 7 OF 7 DRAWING NO. WW-RE-175

54-2130

24-5435