

- LEGEND
- Embankment
 - Excavation
 - Dumped riprap in plan
 - Levee-existing (Site Map & Plan)
 - Dumped riprap in section
 - Levee to be raised (Site Map)
 - Excavation (Site Map)
 - Levee to be repaired
 - Dumped riprap (Site Map)
 - Railroad
 - Right-of-way
 - Utilities
 - Fences

PLAN
SCALE IN FEET
0 800 1600 2400

DEPARTMENT OF THE ARMY
OFFICE OF THE WALLA WALLA DISTRICT ENGINEER
NORTH PACIFIC DIVISION

REAL ESTATE
PENDLETON LEVEES
CHANNEL AND LEVEE RIGHT OF WAY
INDEX MAP
UMATILLA COUNTY, OREGON

DRAWN BY: C.V.C.
TRACED BY: C.V.C.
CHECKED BY: H.A.L.
SUBMITTED BY: *Harvey A. Pender*
CHIEF, INDUSTRIAL SECTION

APPROVED BY: *Walter T. Gowan*
CHIEF, REAL ESTATE DIVISION

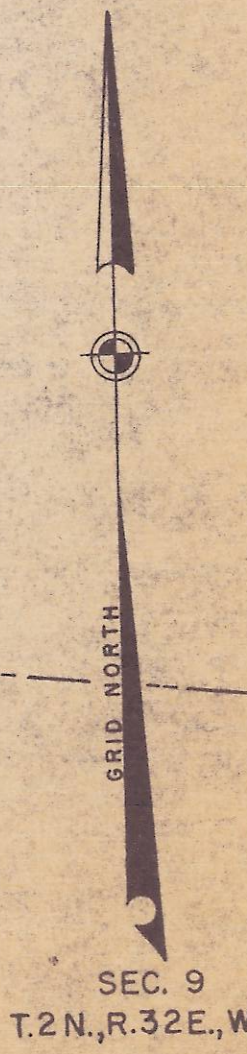
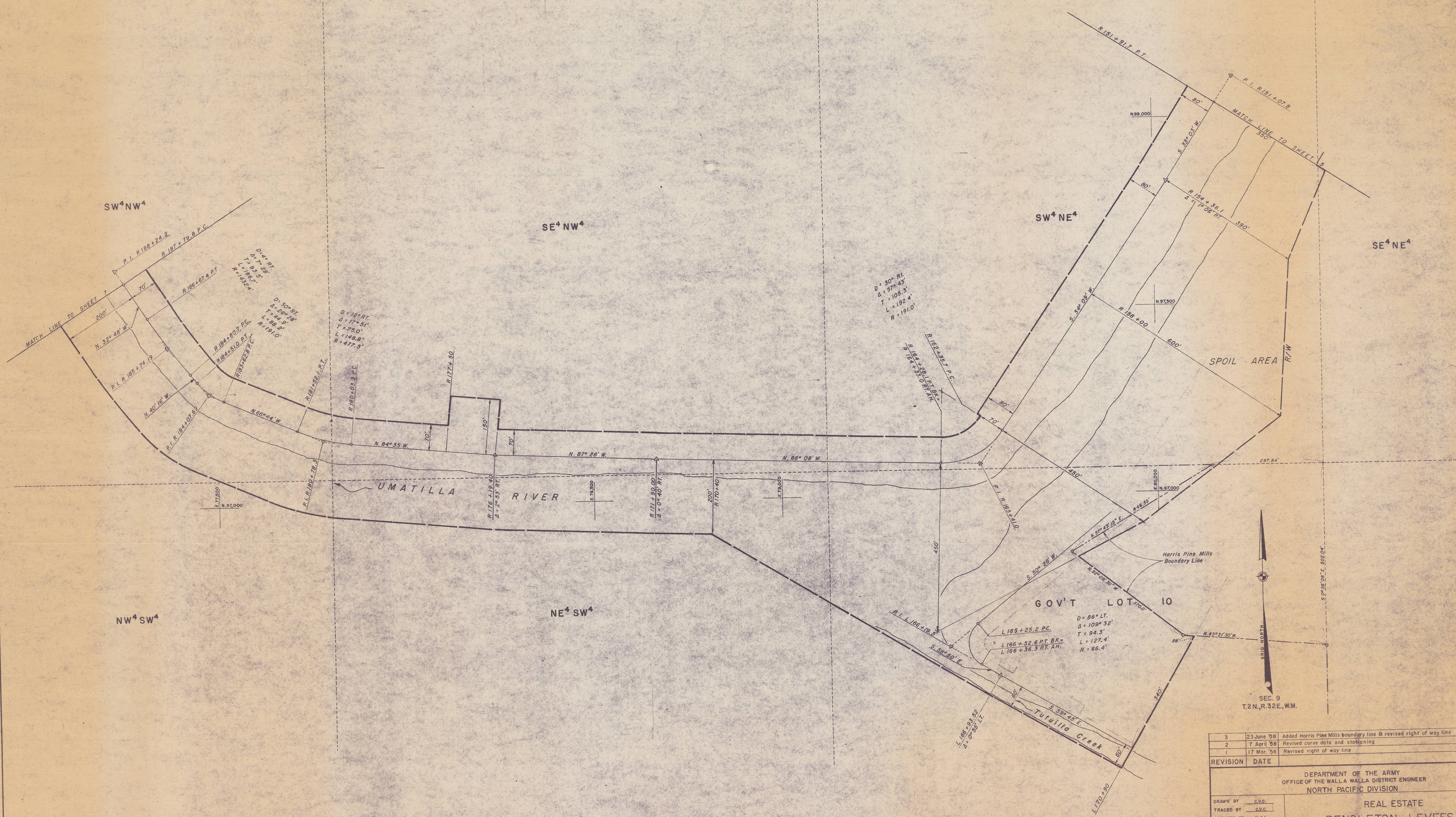
APPROVED BY: *[Signature]*
COLONEL, CORPS OF ENGINEERS, PORTLAND DISTRICT ENGINEER

DATE: 15 JAN. 1958

SCALE IN FEET
800 400 0 800 1600

SHEET 1 OF 7 DRAWING NO. WW-RE-179

24-5439



REVISION	DATE	DESCRIPTION	BY
3	23 June '58	Added Harris Pine Mills boundary line & revised right of way line	C.V.C.
2	7 April '58	Revised curve data and stationing	C.V.C.
1	17 Mar. '58	Revised right of way line	K.D.M.

DEPARTMENT OF THE ARMY
OFFICE OF THE WALLA WALLA DISTRICT ENGINEER
NORTH PACIFIC DIVISION

REAL ESTATE
PENDLETON LEVEES
CHANNEL AND LEVEE RIGHT OF WAY
UMATILLA RIVER
UMATILLA COUNTY, OREGON

DRAWN BY: C.V.C.
TRACED BY: C.V.C.
CHECKED BY: H.A.L.
SUBMITTED BY: Harry A. Lindau, CHIEF, CADASTRAL SECTION
RECOMMENDED BY: Mark K. Tyson, CHIEF, REAL ESTATE DIVISION

APPROVED BY: [Signature] DATE 15 Jan. 1958
COLONEL, CORPS OF ENGINEERS, DISTRICT ENGINEER

SCALE IN FEET
100' 100' 200'

SHEET 6 OF 7 DRAWING NO. WW-RE-175

24-5439