

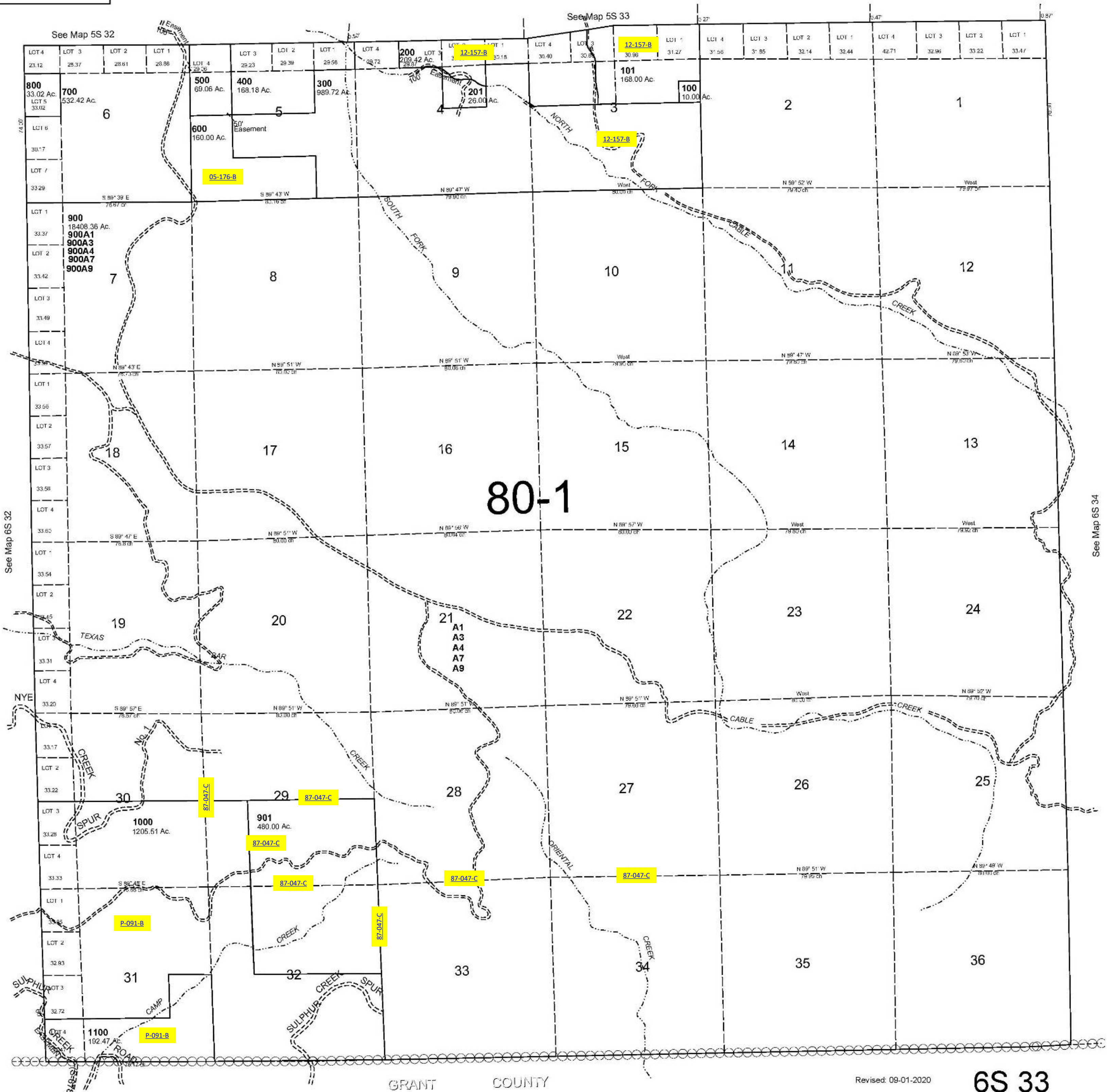
ALSO SEE SURVEYS 83-179-BB, 84-104-B, F-019-B, Q-1223-B; CORNER RECORDS; G.L.O. SURVEYS

This map was prepared for Assessment & Taxation purposes only and was NOT prepared nor is it suitable for legal, engineering or surveying purposes.

T6S R33E WM UMATILLA COUNTY

6S 33

SCALE 1"=2000'



GRANT COUNTY

Revised: 09-01-2020

6S 33