

ALSO SEE SURVEYS 03-023-C, 09-010-C, 12-033-C, 98-147-G, S-157-C; BOOK 2 PAGE 12 (FRUITVALE ADDITION); CORNER RECORDS; G.L.O. SURVEYS

This map was prepared for Assessment & Taxation purposes only and was NOT prepared nor is it suitable for legal, engineering or surveying purposes.

Cancelled Tax Lots:

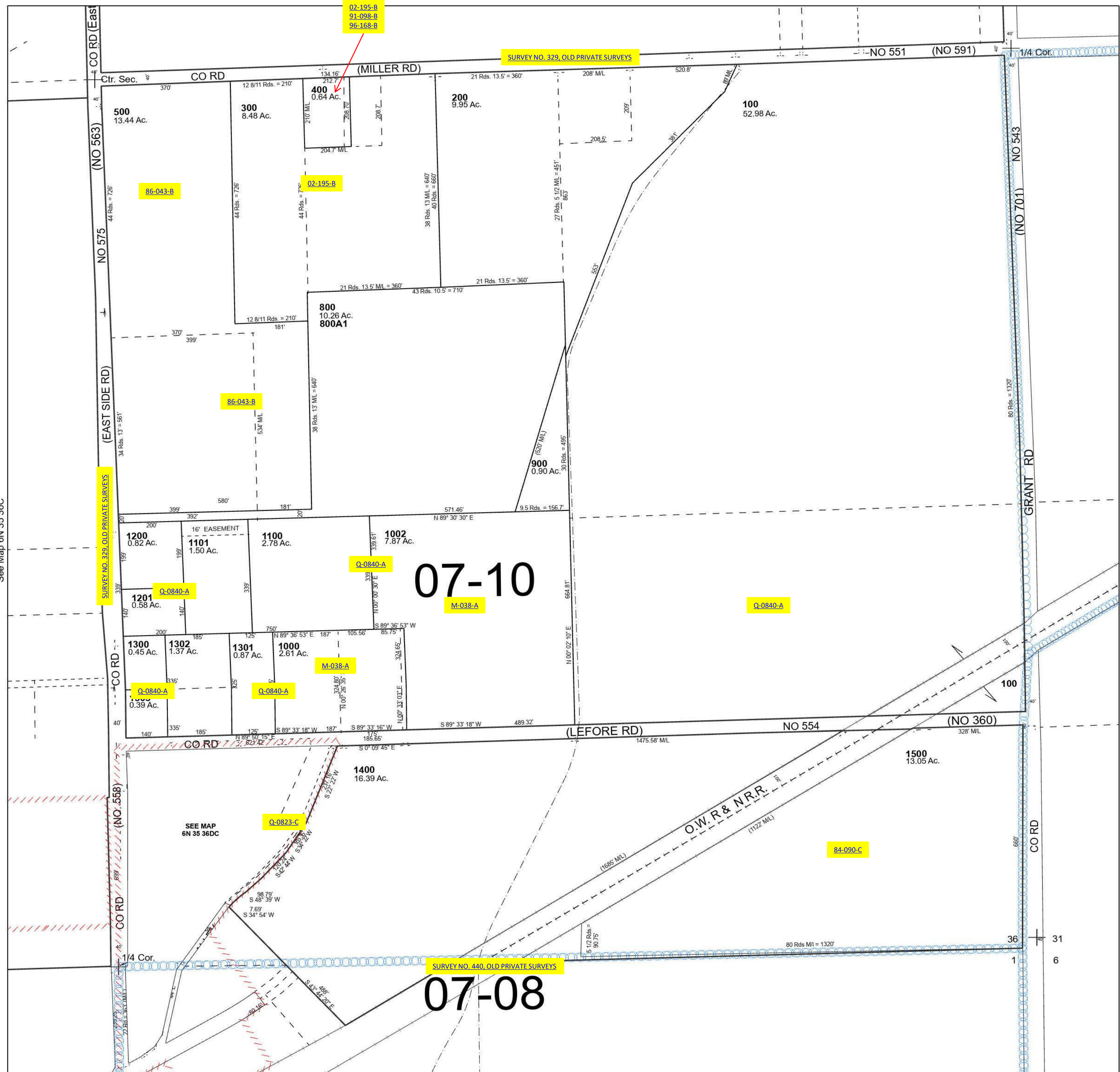
- 301
- 600
- 700
- 1001
- 1304

# SE 1/4 SEC 36 T6N R35E WM UMATILLA COUNTY

## 6N 35 36D

SCALE 1" = 200'

See Map 6N 35 36A



Revised 10/25/2023

See Map 5N 35 01

## 6N 35 36D