

ALSO SEE SURVEYS 03-023-C, 12-033-C, 98-147-G; CORNER RECORDS; G.L.O. SURVEYS

This map was prepared for Assessment & Taxation purposes only and was NOT prepared nor is it suitable for legal, engineering or surveying purposes.

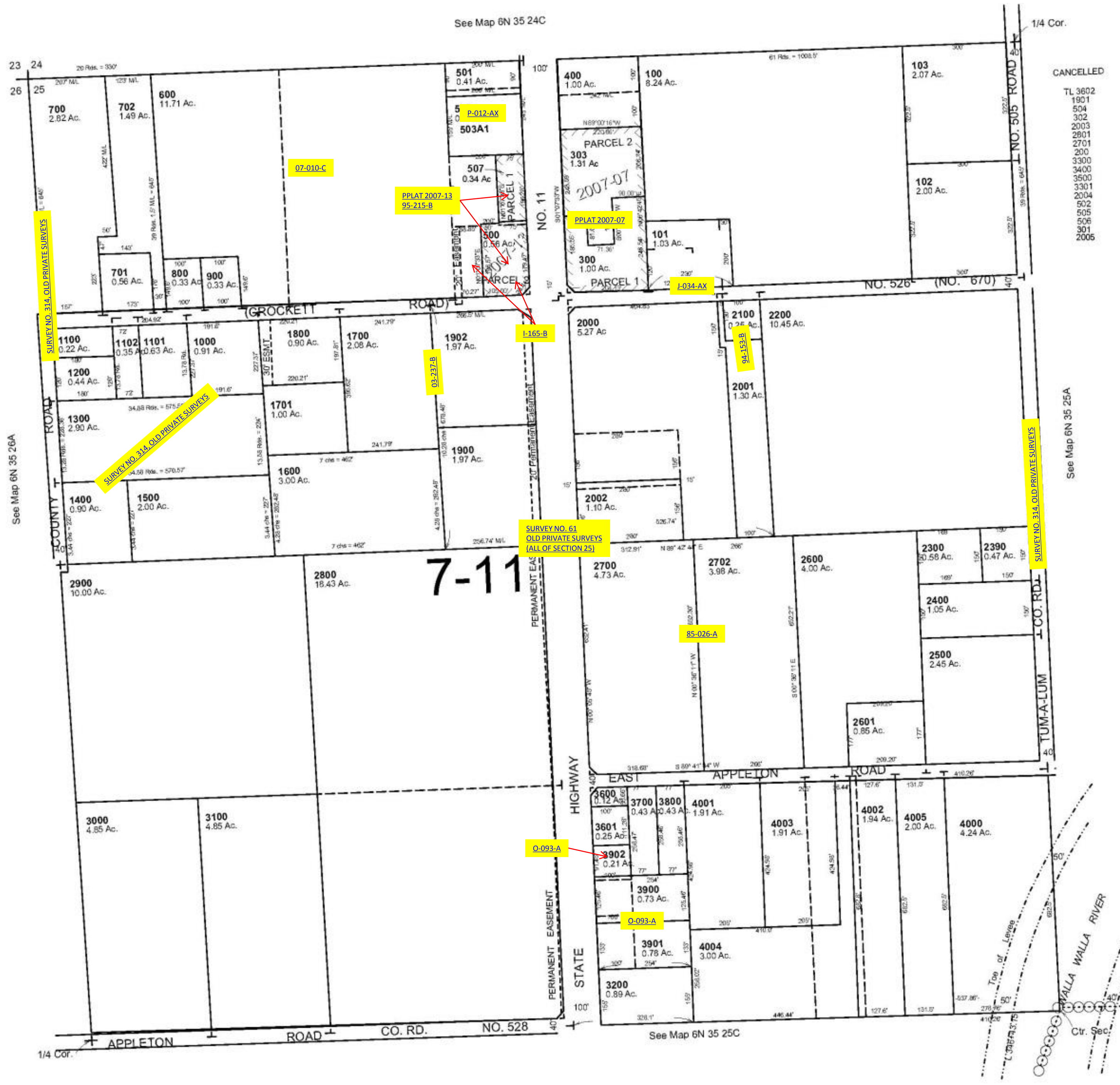


NW 1/4 SEC 25 T 6N R 35E WM UMATILLA COUNTY

SCALE: 1" = 200'

6N 35 25B

AERIAL PHOTO NO. NZ-6P-64



Revised: 7/18/11

6N3525B