

ALSO SEE SURVEYS 03-023-C, 12-033-C; CORNER RECORDS; G.L.O. SURVEYS

This map was prepared for Assessment & Taxation purposes only and was NOT prepared nor is it suitable for legal, engineering or surveying purposes.

Cancelled Tax Lots

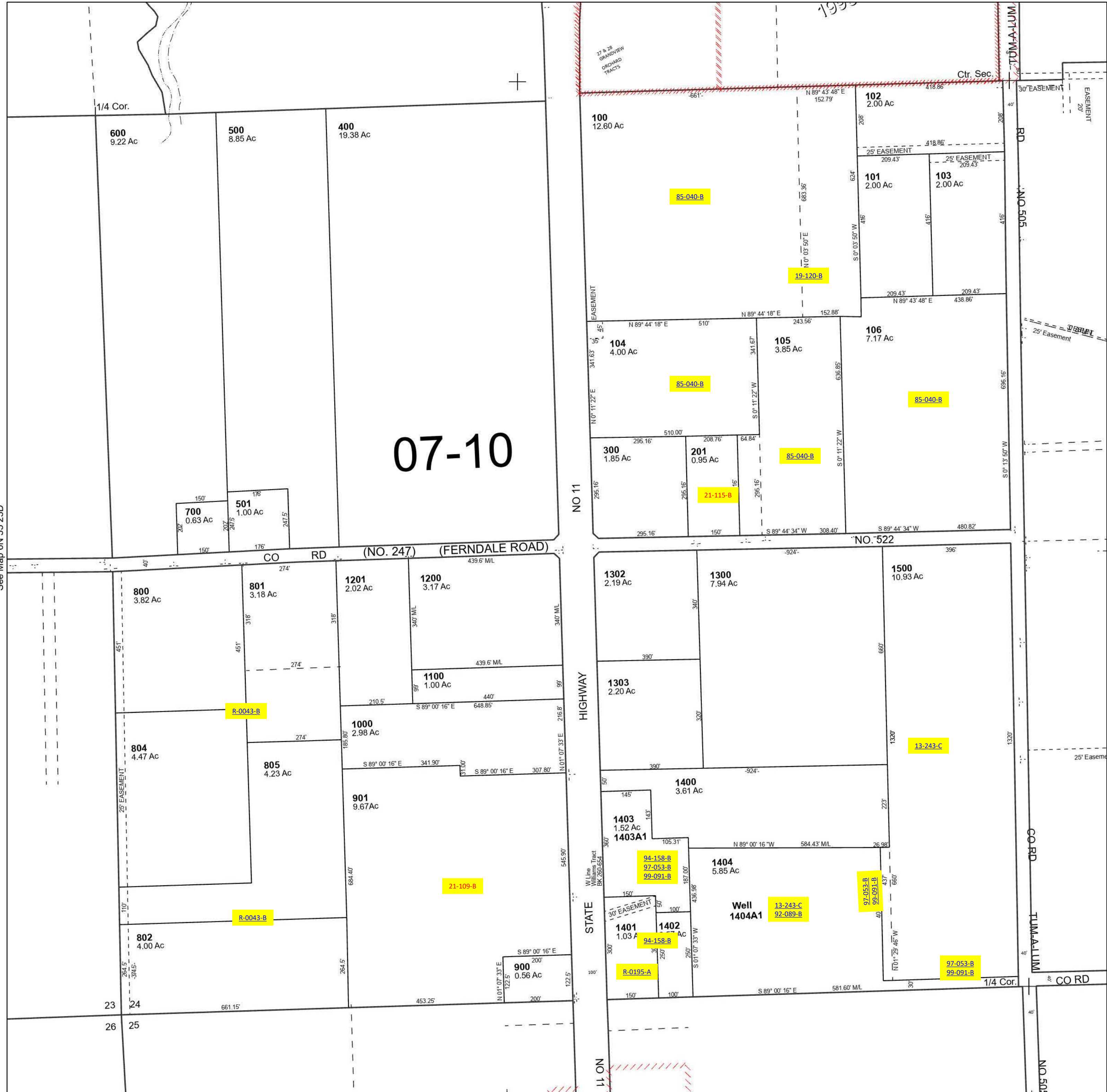
- 301
- 303
- 1202
- 1301
- 200

SW 1/4 SEC 24 T6N R35E WM UMATILLA COUNTY

6N 35 24C

SCALE 1" = 200'

See Map 6N 35 24B



Revised 5/18/2023

See Map 6N 35 25B

6N 35 24C