

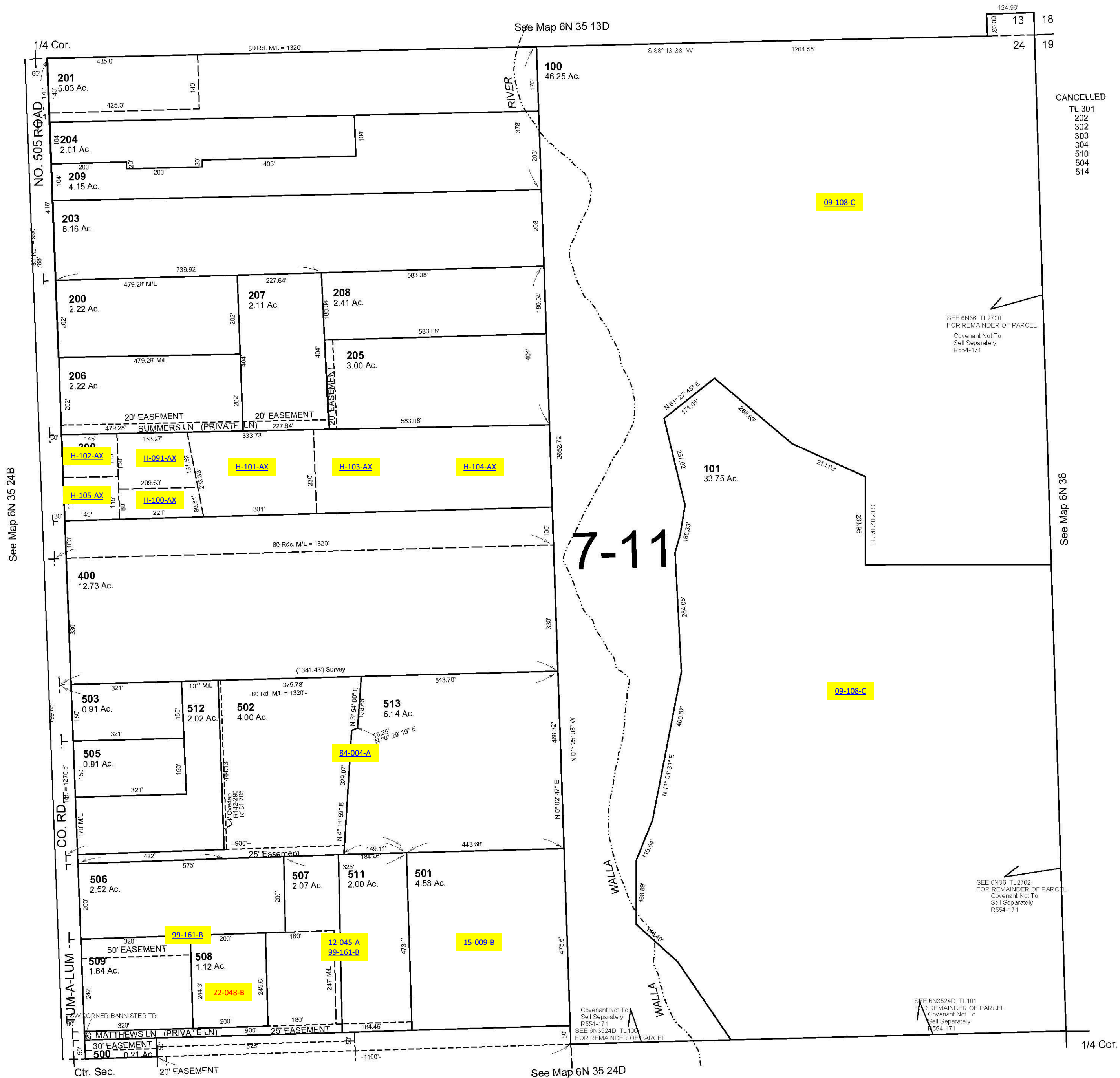
ALSO SEE SURVEYS 03-023-C, 09-010-C, 12-033-C; CORNER RECORDS; G.L.O. SURVEYS

This map was prepared for Assessment & Taxation purposes only and was NOT prepared nor is it suitable for legal, engineering or surveying purposes.

# NE1/4 SEC 24 T6N R35E WM UMATILLA COUNTY SCALE 1"=200'

## 6N 35 24A

AERIAL PHOTO NO. 6P-17



CANCELLED  
 TL 301  
 202  
 302  
 303  
 304  
 510  
 504  
 514

SEE 6N36 TL2700  
 FOR REMAINDER OF PARCEL  
 Covenant Not To  
 Sell Separately  
 R554-171

SEE 6N36 TL2702  
 FOR REMAINDER OF PARCEL  
 Covenant Not To  
 Sell Separately  
 R554-171

SEE 6N3524D TL101  
 FOR REMAINDER OF PARCEL  
 Covenant Not To  
 Sell Separately  
 R554-171

Revised: 4/08/11

## 6N 35 24A