

ALSO SEE SURVEYS 89-005-A, 03-023-C, 12-033-C, 12-048-AX; CORNER RECORDS; G.L.O. SURVEYS

This map was prepared
for assessment purposes

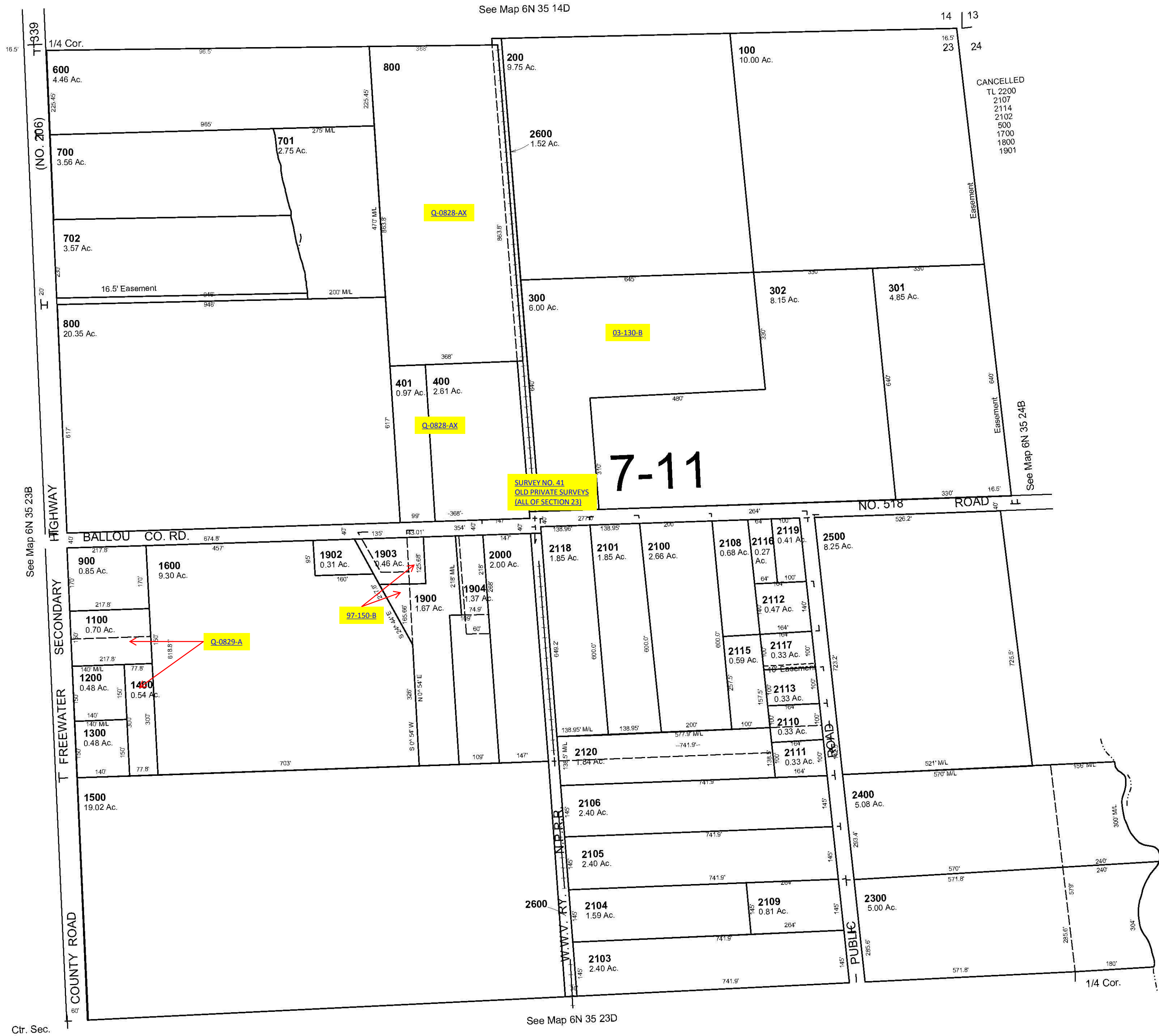
NE1/4 SEC 23 T6N R35E WM UMATILLA COUNTY

SCALE 1"=200'

10/12/06

6N 35 23A

AERIAL PHOTO NO. NZ 6P-18



6N 35 23A