

This map was prepared for Assessment & Taxation purposes only and was NOT prepared nor is it suitable for legal, engineering or surveying purposes.

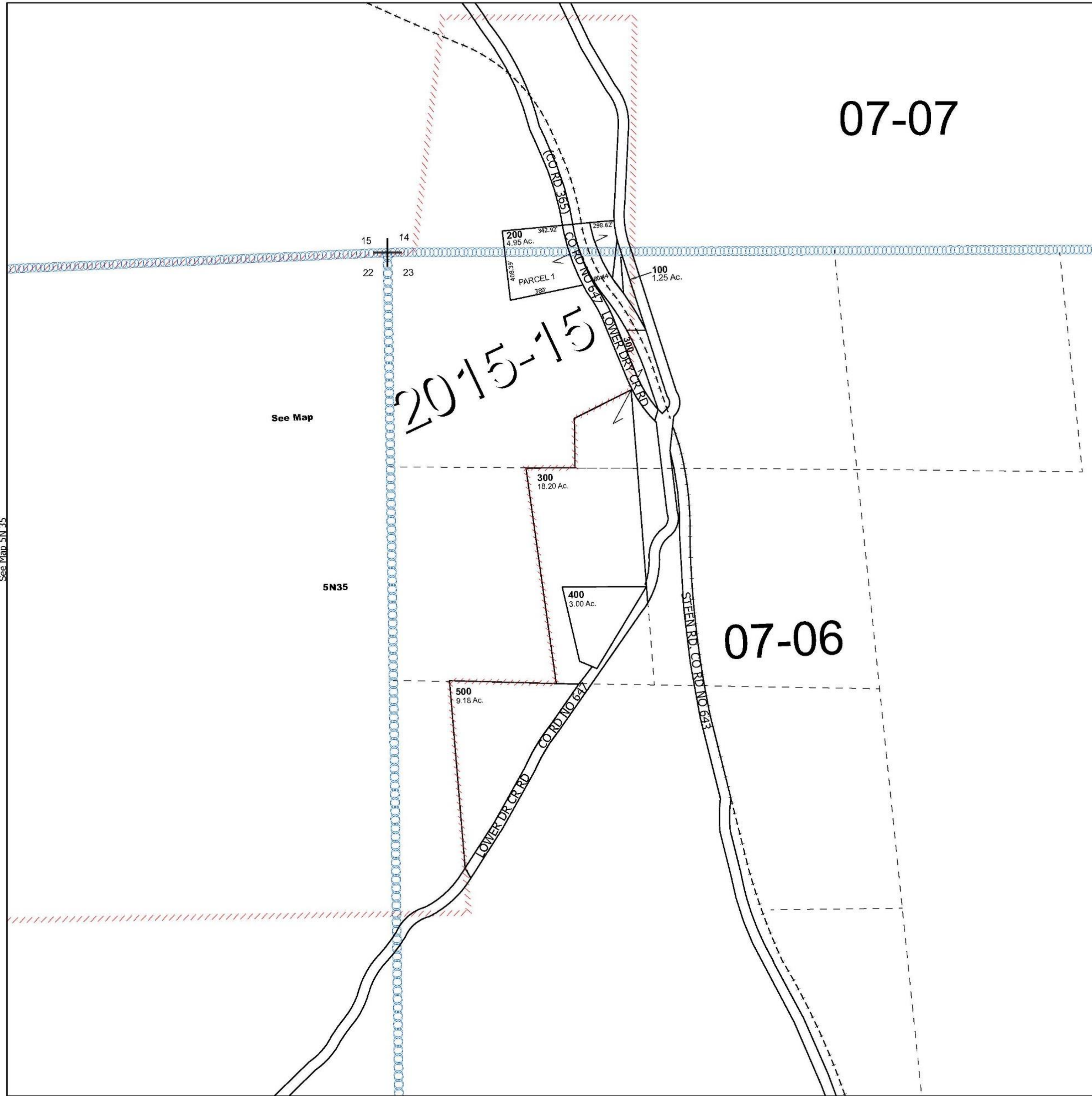
Cancelled Tax Lots

SEC 23 T5N R35E WM UMATILLA COUNTY

5N 35 23

SCALE 1" = 400'

See Map 5N 35



See Map 5N 35

See Map

5N35

See Map 5N 35

Revised 8/26/2024

See Map 5N 35

5N 35 23