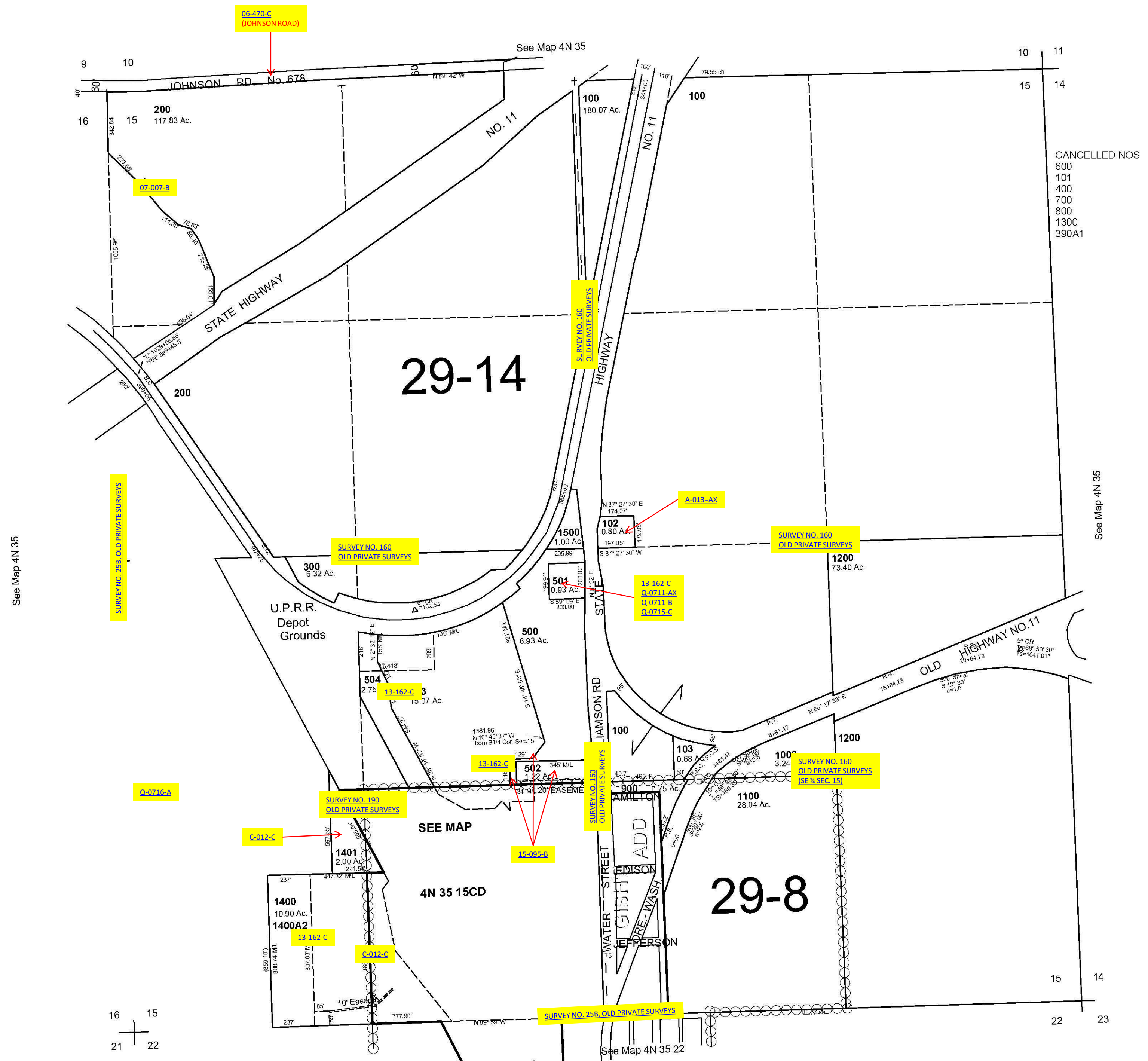


This map was prepared for Assessment & Taxation purposes only and was NOT prepared nor is it suitable for legal, engineering or surveying purposes.

SEC 15 T4N R35E WM
UMATILLA COUNTY
SCALE 1"=400'

4N 35 15
AERIAL PHOTO NO. 5P-97 & 98



Revised: 11-13-12
4N 35 15