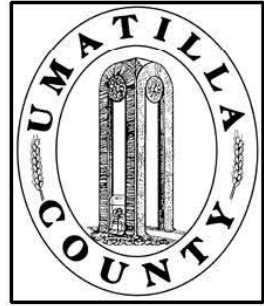


ALSO SEE SURVEYS 05-083-B, 07-066-B, 07-136-A, 13-194-A, 02-012-C, 03-023-C, 11-143-A, 83-076-C, 83-156-C, 97-141-C; SURVEY NO. 25B, OLD PRIVATE SURVEYS; CORNER RECORDS; G.L.O. SURVEYS; REDFIELD SURVEYS (SECTIONS 31-33)

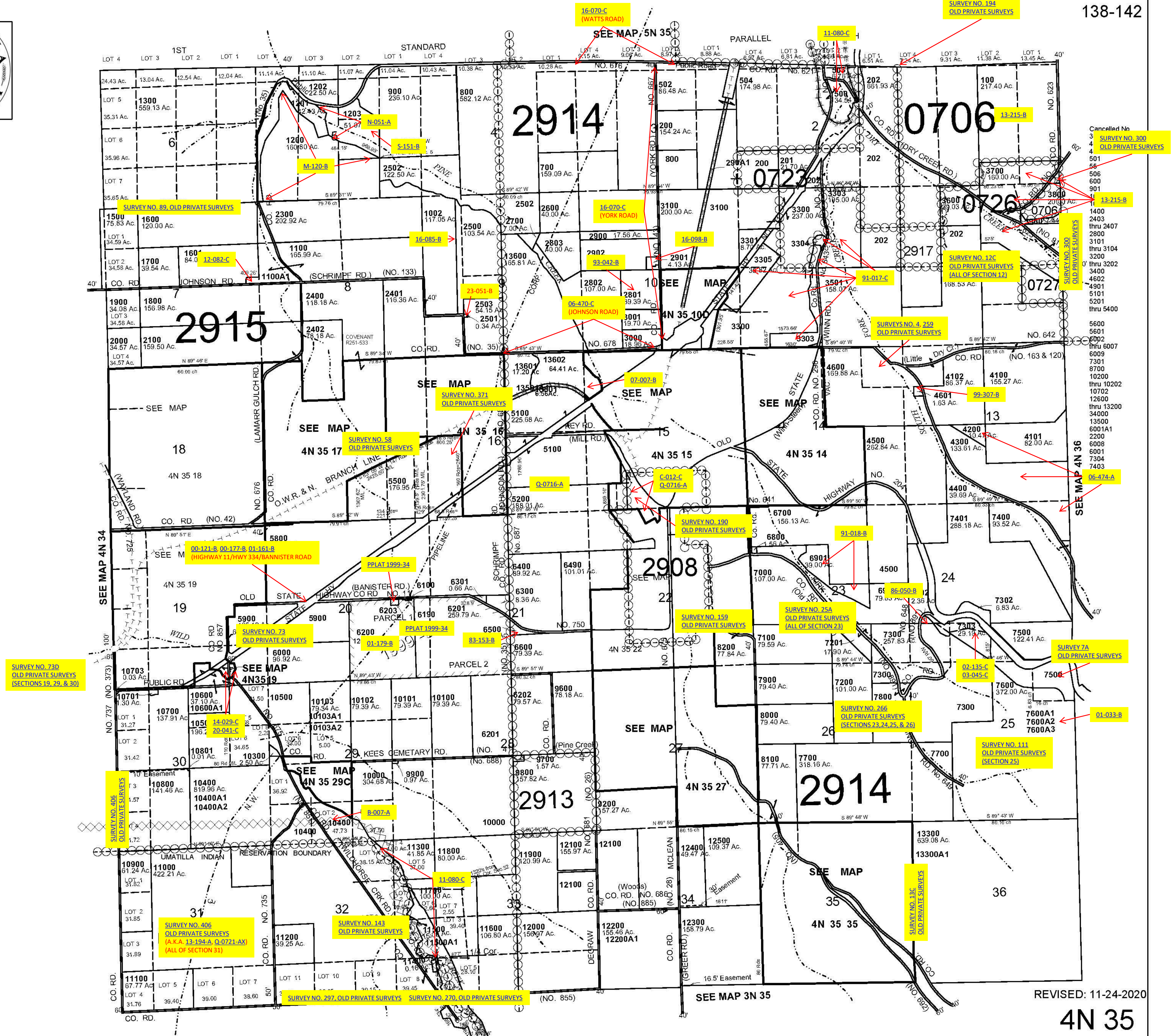
This map was prepared for Assessment & Taxation purposes only and was NOT prepared nor is it suitable for legal, engineering or surveying purposes.



T4N R35E WM UMATILLA COUNTY

SCALE 1"=2000'

4N 35
AERIAL PHOTO NO. NZ-5P-61-65
95-99
138-142



REVISED: 11-24-2020
4N 35