

ALSO SEE SURVEYS S-156-C, 06-265-C, 07-074-C, 88-027-B, 95-059-B; SURVEYS NO. 233 & 304, OLD PRIVATE SURVEYS; CORNER RECORDS; G.L.O. SURVEYS

This map was prepared for Assessment & Taxation purposes only and was NOT prepared nor is it suitable for legal, engineering or surveying purposes.

Cancelled Tax Lots

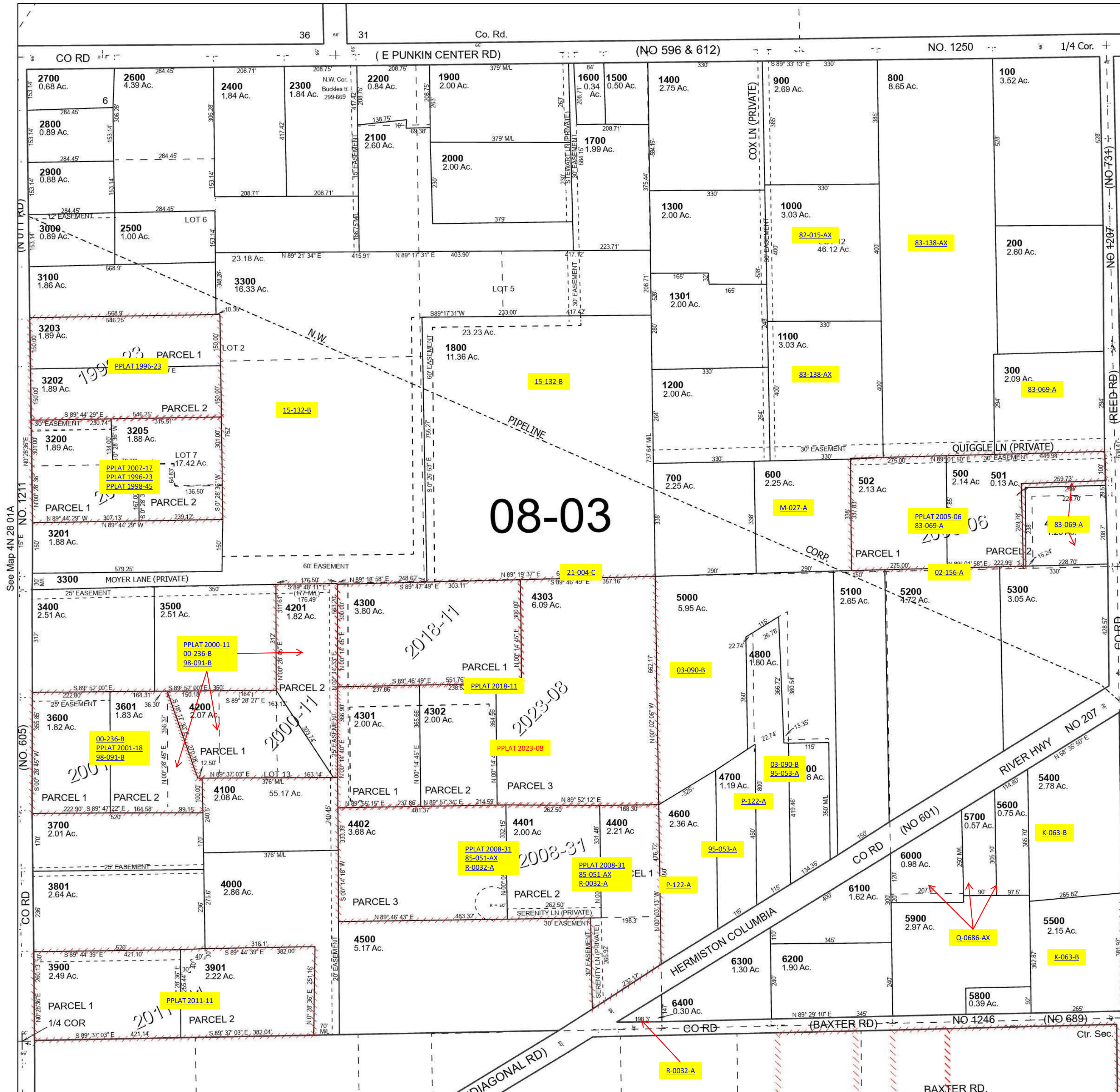
- 2601
- 3204
- 3301
- 3302
- 3800

NW 1/4 SEC 06 T4N R29E WM UMATILLA COUNTY

4N 29 06B

SCALE 1" = 200'

See Map 5N 29 31C



Revised 7/14/2023

See Map 4N 29 06C

4N 29 06B