

ALSO SEE SURVEYS 06-220-B, Q-0041-C, Q-0045-B, 11-038-C, 13-532-C, 95-060-B, 98-213-C; SURVEY NO. 233, OLD PRIVATE SURVEYS; CORNER RECORDS; G.L.O. SURVEYS

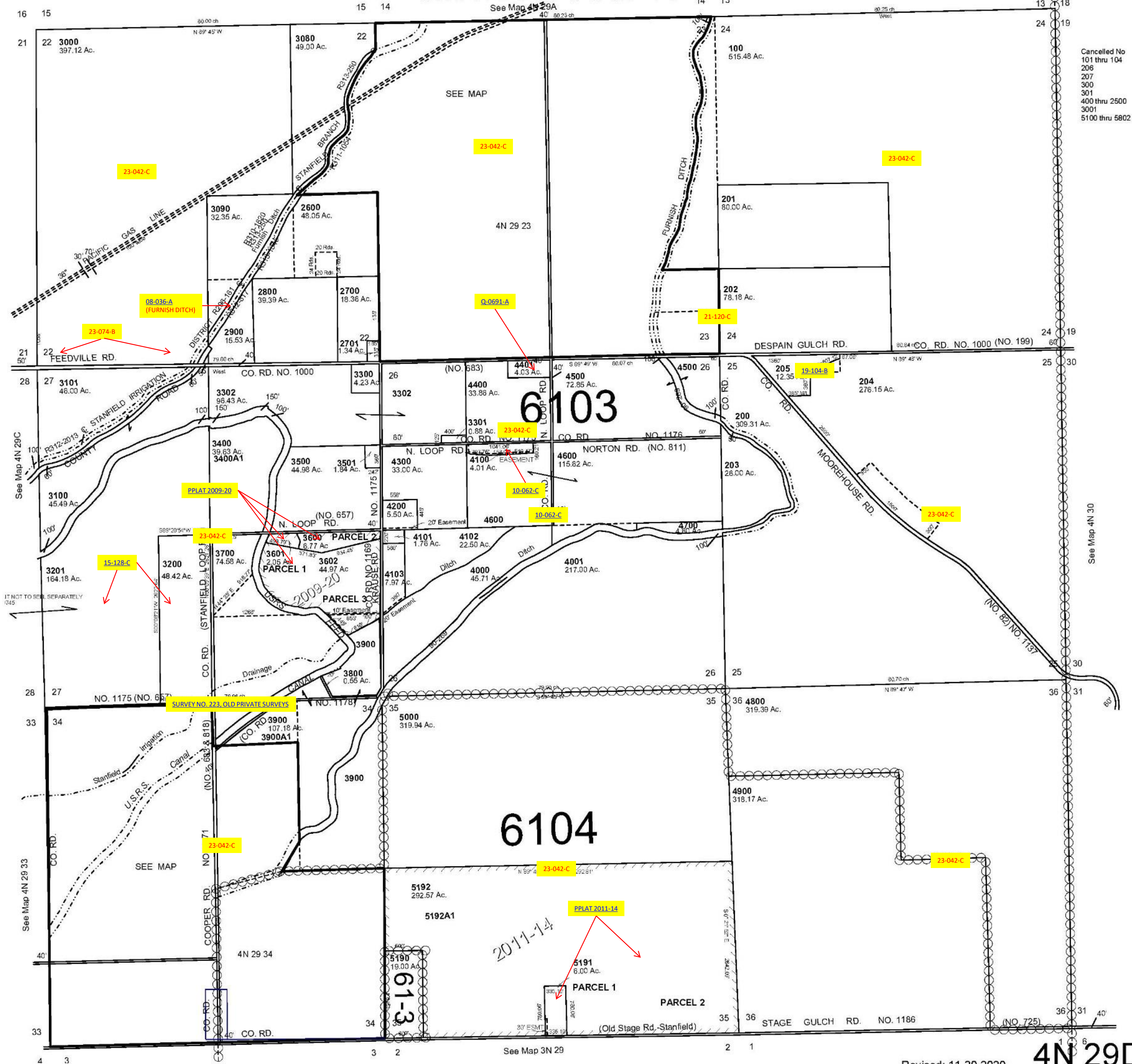
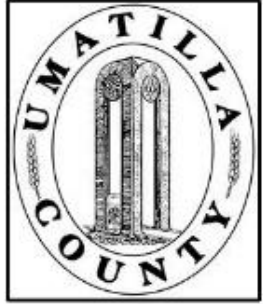
This map was prepared for Assessment & Taxation purposes only and was NOT prepared nor is it suitable for legal, engineering or surveying purposes.

SCALE: 1" = 1000'

SE1/4 T4N R29E WM
UMATILLA COUNTY

4N 29D

AERIAL PHOTO NO. NZ-2P 15-17 & 47-50



Revised: 11-30-2020

4N 29D