

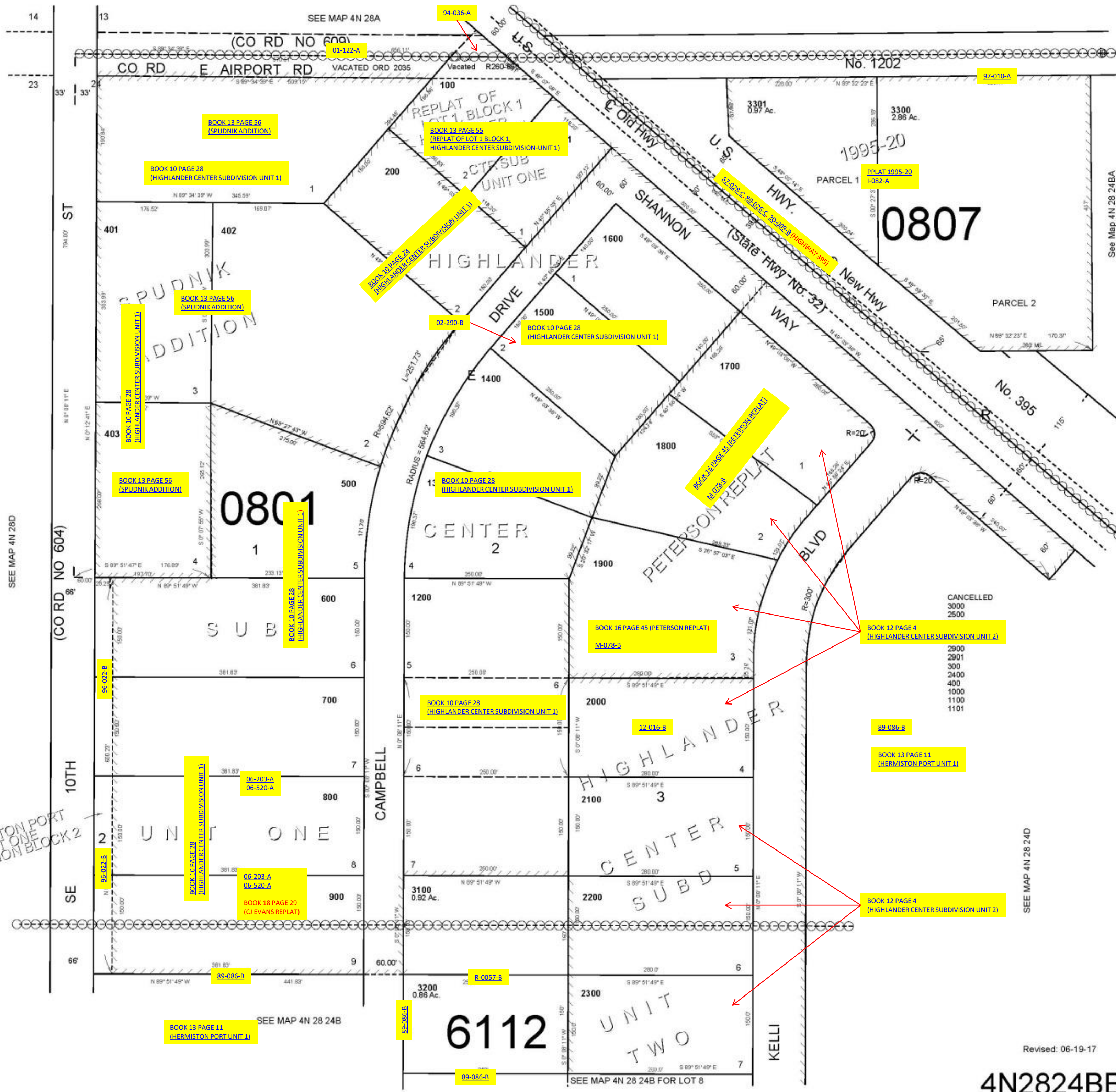
This map was prepared for Assessment & Taxation purposes only and was NOT prepared nor is it suitable for legal, engineering or surveying purposes.

NW1/4 NW1/4 SEC 24 T 4N R28E WM UMATILLA COUNTY

SCALE: 1" = 100'

4N2824BB

AERIAL PHOTO NO 2P-21



HERMISTON PORT UNIT ONE PORTION BLOCK 2

Revised: 06-19-17

4N2824BB