

This map was prepared for Assessment & Taxation purposes only and was NOT prepared nor is it suitable for legal, engineering or surveying purposes.

Cancelled Tax Lots

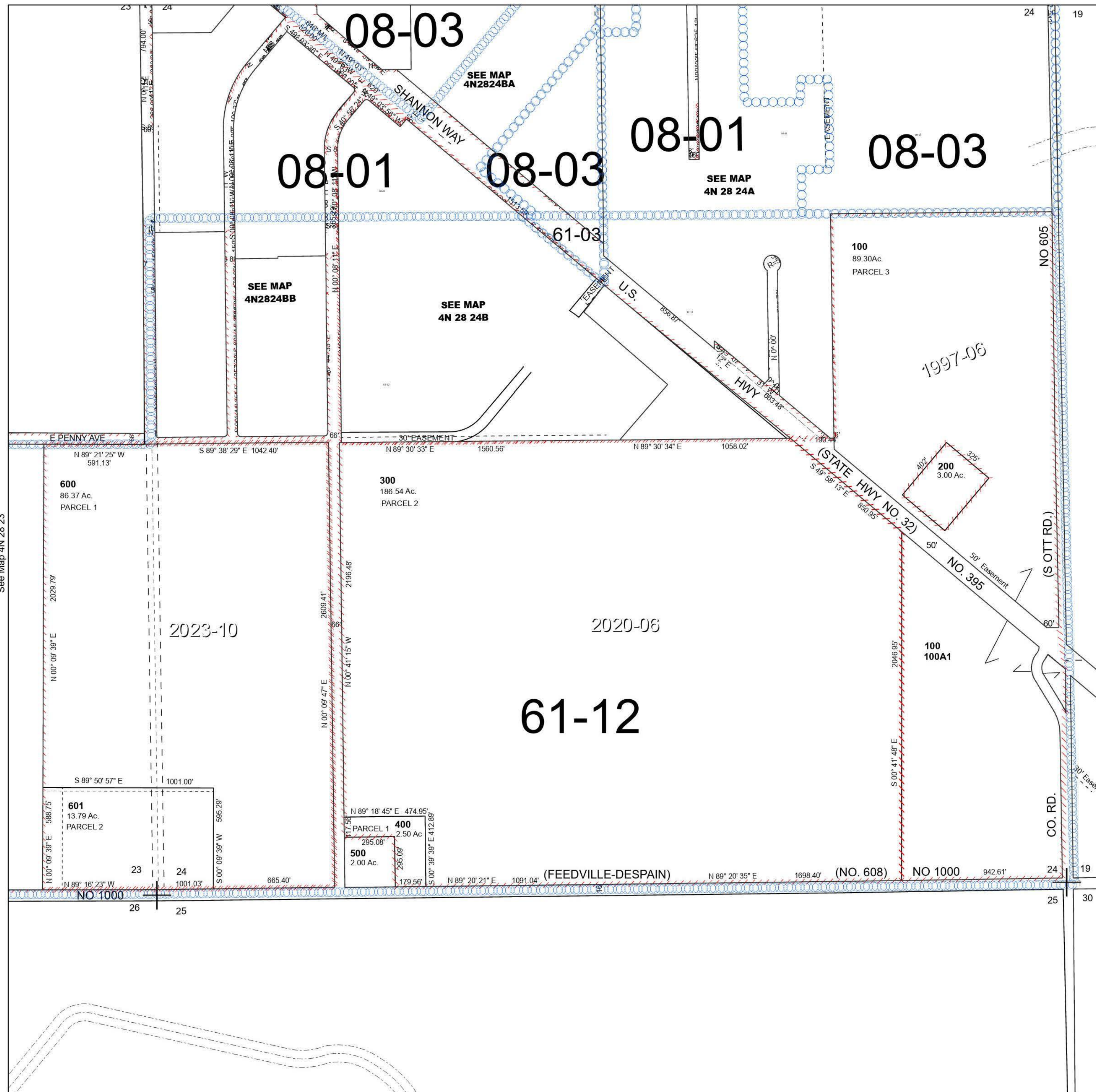
SEC 24 T4N R28E WM UMATILLA COUNTY

4N 28 24

Hermiston

SCALE 1" = 400'

See Map 4N 28



See Map 4N 28 23

See Map 4N 29 19

Revised 11/30/2023

See Map 4N 28

4N 28 24