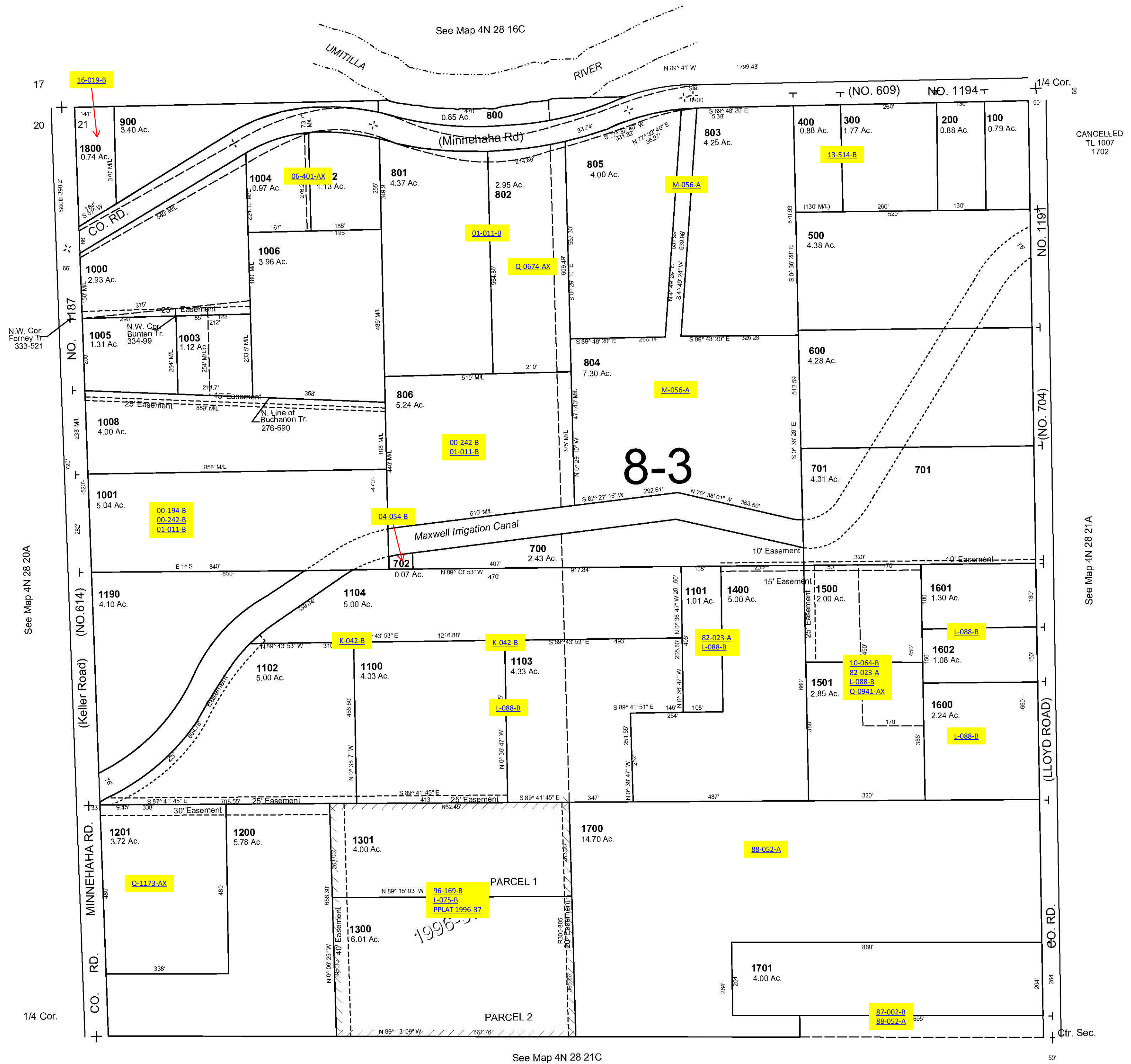


This map was prepared for assessment purposes

NW1/4 SEC 21 T4N R28E WM UMATILLA COUNTY SCALE 1"=200'

9/18/06

4N 28 21B
AERIAL PHOTO NO. 2P-25



CANCELLED
TL 1007
1702

See Map 4N 28 21A

See Map 4N 28 21C

4N 28 21B