

This map was prepared for Assessment purposes only.



NE 1/4 SEC 20 T 4N R 28 E WM

9/23/04

4N2820A

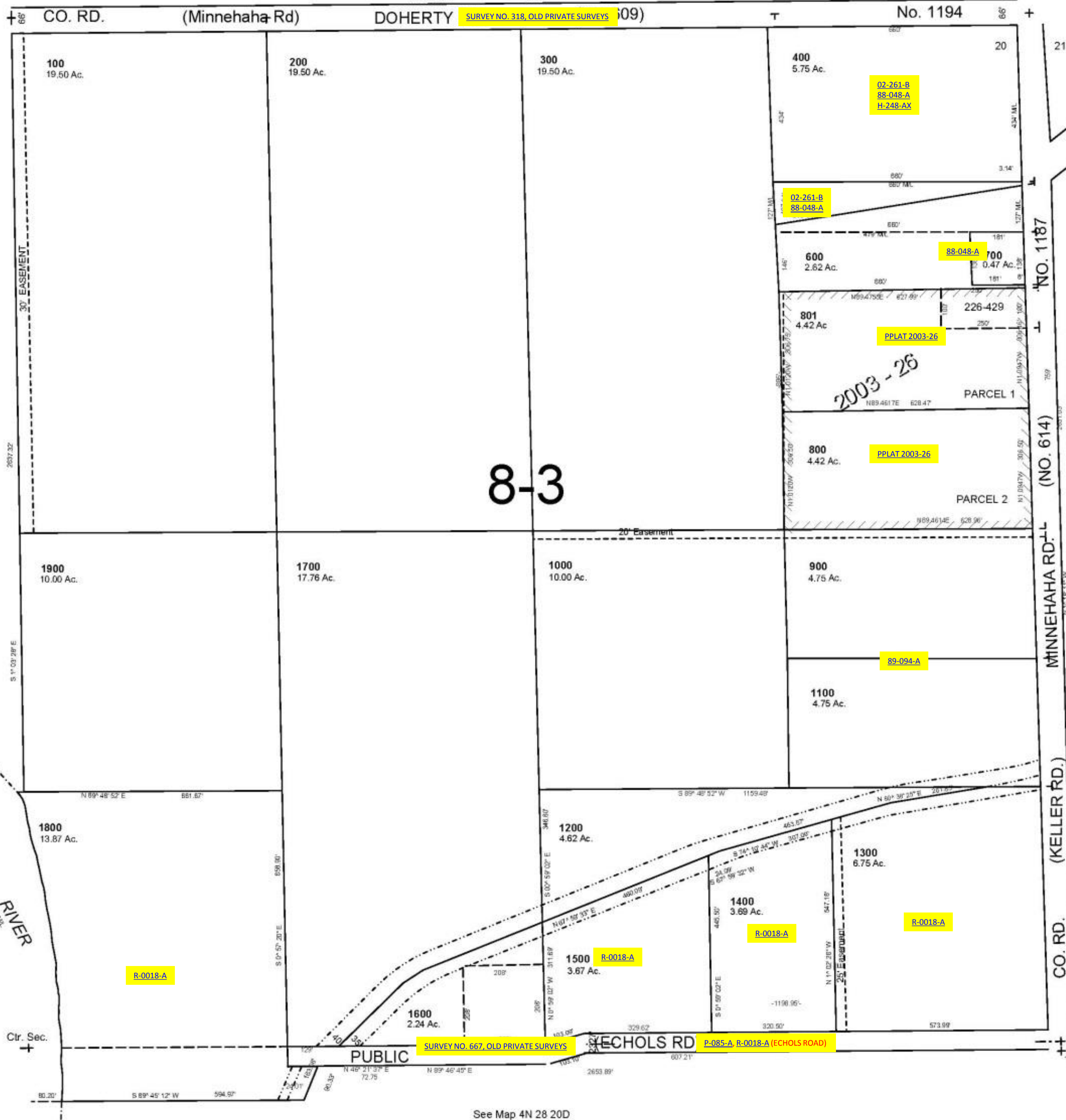
UMATILLA COUNTY, OR

SCALE: 1" 200'

See Map 4N 28 17D

1/4 Cor.

17 16



CANCELLED TL 500

NO. 1187

MINNEHAHA RD. (NO. 614)

(KELLER RD.)

1/4 Cor.

See Map 4N 28 20D

4N2820A