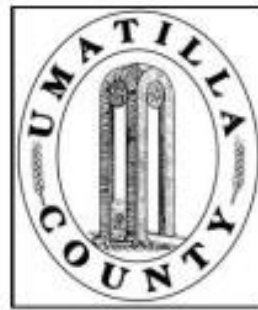


ALSO SEE SURVEY 05-013-G

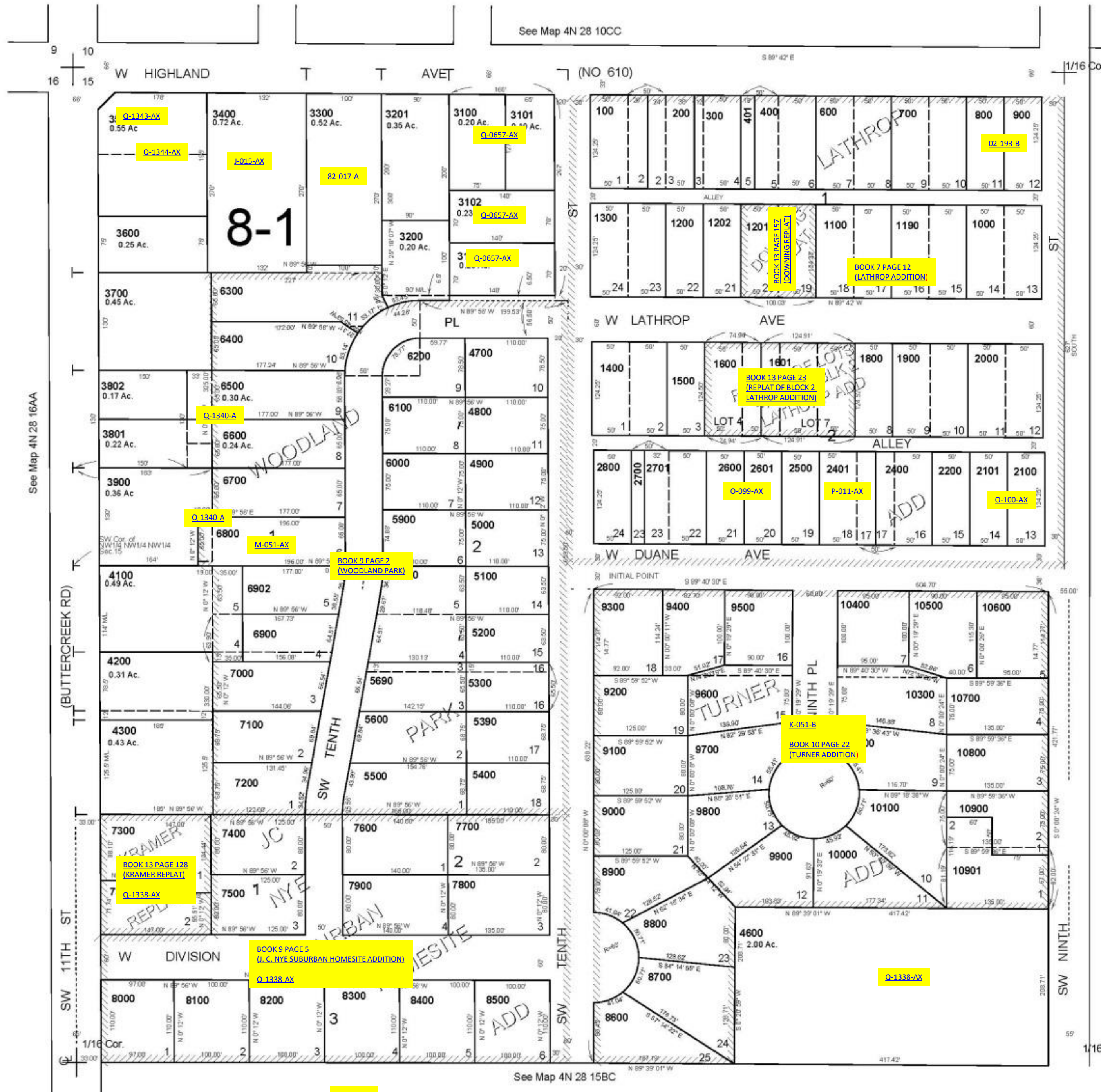
This map was prepared for Assessment & Taxation purposes only and was NOT prepared nor is it suitable for legal, engineering or surveying purposes.



NW1/4 NW1/4 SEC 15 T4N R28E WM UMATILLA COUNTY

4N2815BB
Aerial Photo No. NZ-2P-23

SCALE: 1" = 100'



- CANCELLED
- TL 2900
 - 3000
 - 4000
 - 4400
 - 3500
 - 5201
 - 5701
 - 7001
 - 3800
 - 3803
 - 4301
 - 6602
 - 6901
 - 5900
 - 500
 - 4500
 - 11000
 - 2300
 - 2301
 - 3301
 - 6601
 - 6901
 - 1700
 - 5301

See Map 4N 28 15BA

4N2815BB