

ALSO SEE SURVEYS 03-392-C, 15-006-C

This map was prepared for Assessment & Taxation purposes only and was NOT prepared nor is it suitable for legal, engineering or surveying purposes.

SE 1/4 NE 1/4 SEC 15 T4N R28E WM UMATILLA COUNTY

Hermiston

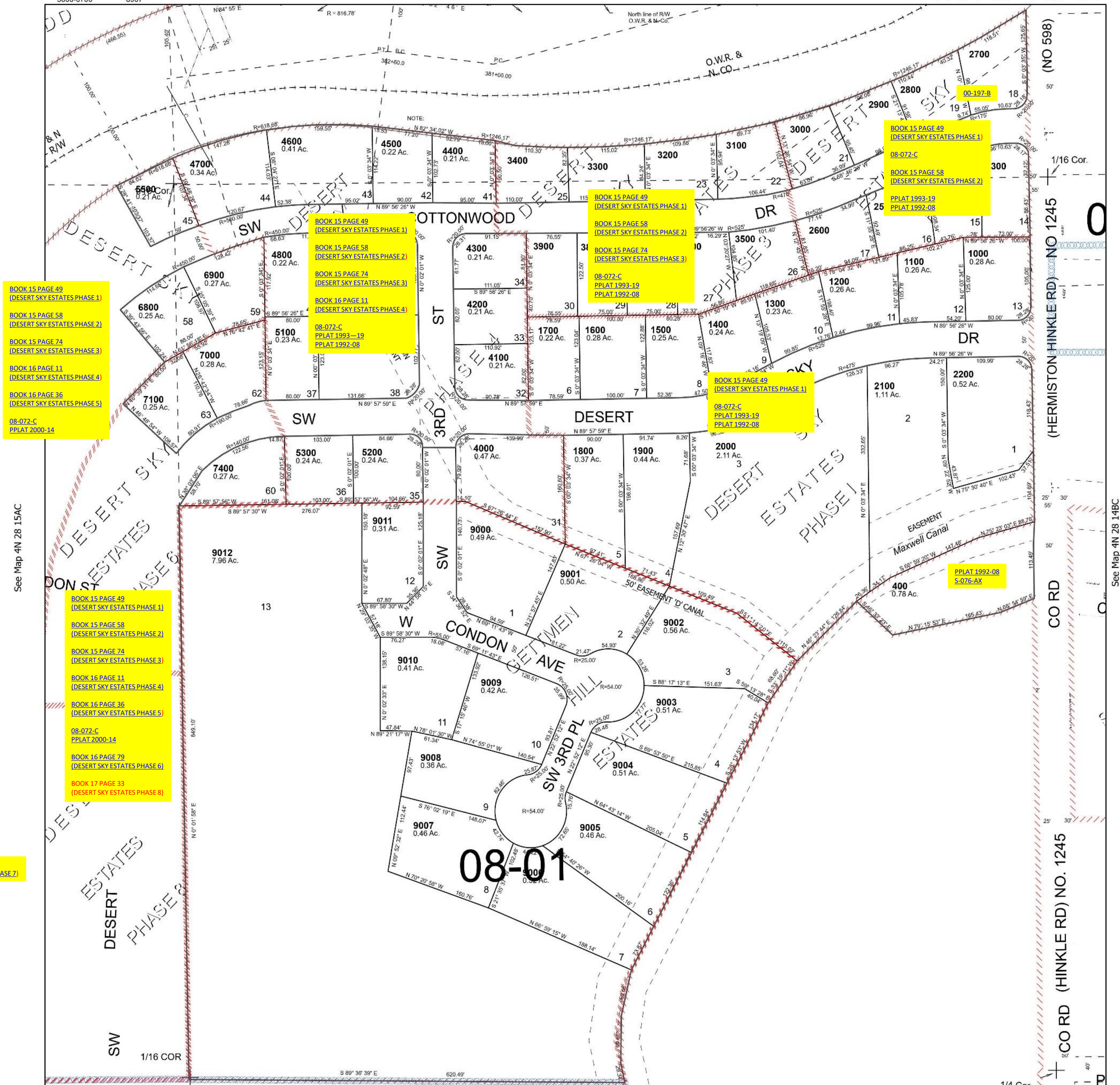
SCALE 1" = 100'

Cancelled Tax Lots

100	7200	8908
200	7300	8909
300	7500-8900	8910
500	8901	
600	8902	
700	8903	
800	8904	
900	8905	
5400	8906	
5600-6700	8907	

See Map 4N 28 15AA

4N 28 15AD



See Map 4N 28 15AC

See Map 4N 28 14BC

Revised 7/7/2023

See Map 4N 28 15

4N 28 15AD