

ALSO SEE SURVEYS 06-427-C, 14-067-AX, 95-145-B, N-062-C, 03-140-B, 07-074-C, 92-045-C, 95-059-B, S-156-C; SURVEY NO. 175, OLD PRIVATE SURVEYS; CORNER RECORDS; G.L.O. SURVEYS

This map was prepared for Assessment & Taxation purposes only and was NOT prepared nor is it suitable for legal, engineering or surveying purposes.

Cancelled Tax Lots

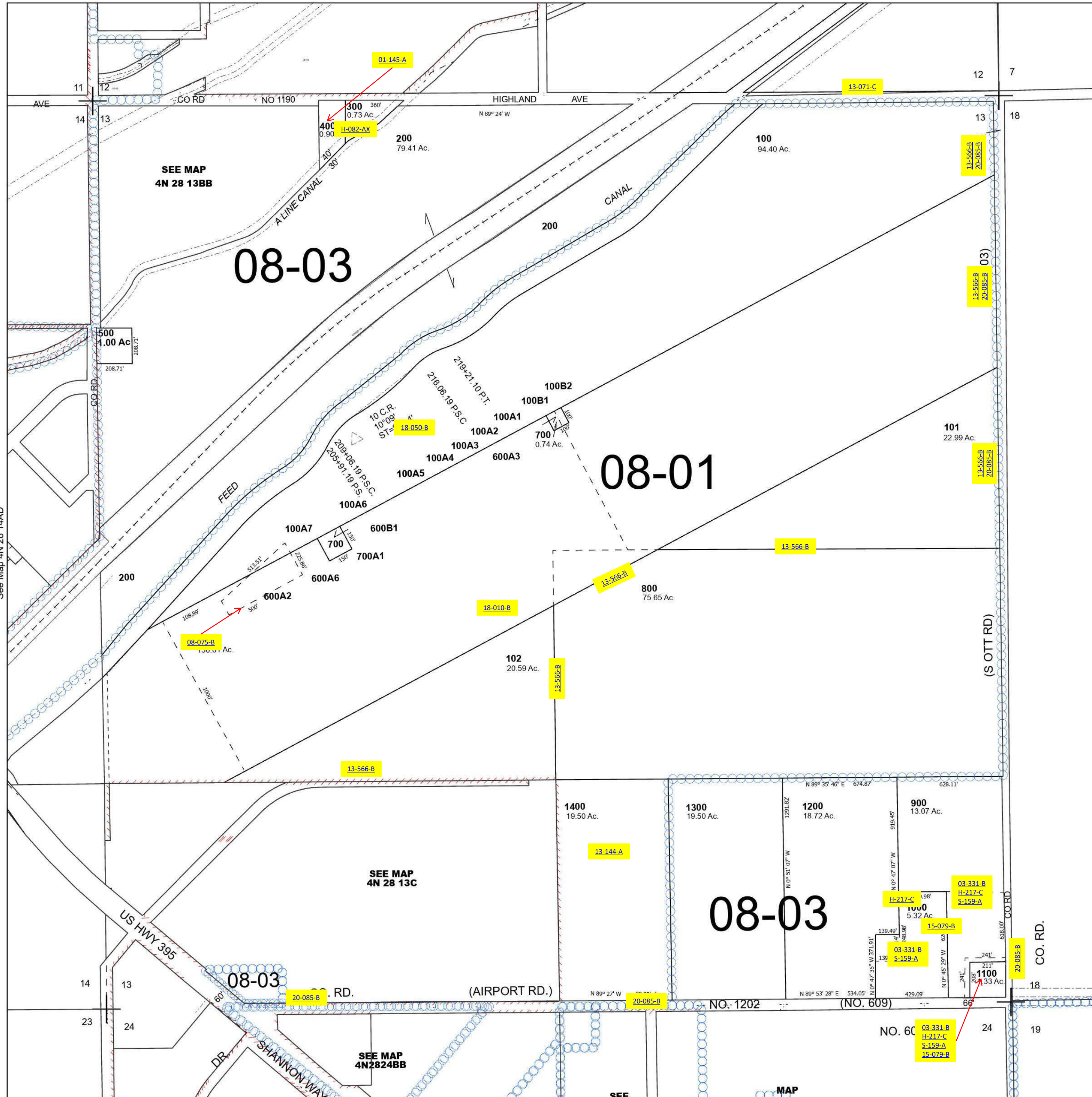
# SEC 13 T4N R28E WM UMATILLA COUNTY

## 4N 28 13

Hermiston

SCALE 1" = 400'

See Map 4N 28 12D



Revised 5/16/2023

See Map 4N 28 24A

## 4N 28 13