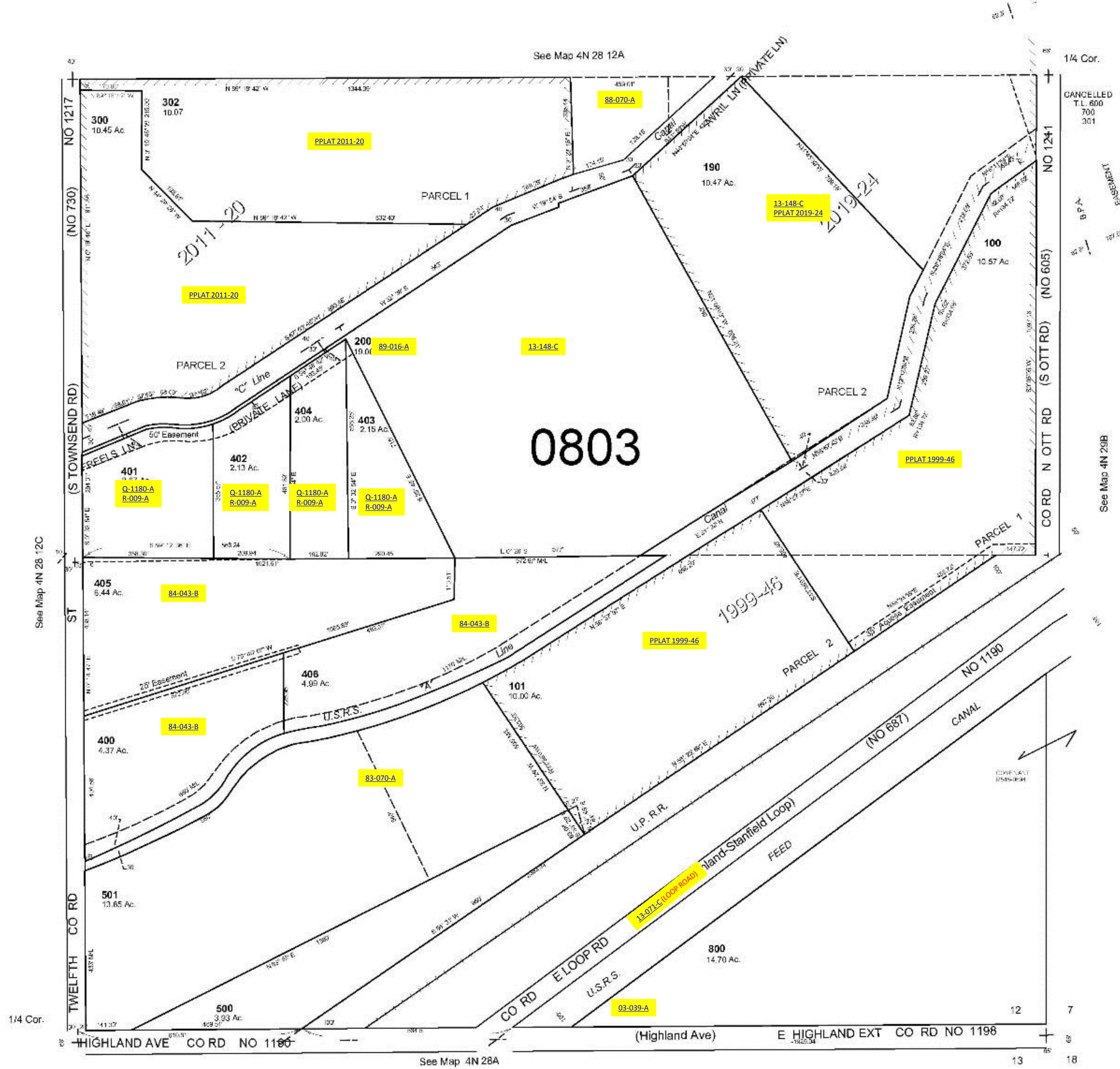


ALSO SEE SURVEYS N-062-C, 07-074-C, 95-059-B, S-156-C; SURVEY NO. 302, OLD PRIVATE SURVEYS; CORNER RECORDS; G.L.O. SURVEYS

This map was prepared for Assessment & Taxation purposes only and was NOT prepared nor is it suitable for legal, engineering or surveying purposes.

SE1/4 SEC 12 T4N R28E WM
UMATILLA COUNTY
SCALE 1"=200'

4N 28 12D
AERIAL PHOTO NO. 1P-123



Revised: 10-30-19
4N 28 12D