

ALSO SEE SURVEYS 07-074-C, 96-034-C, 5-156-C, 13-159-B, 13-163-C; CORNER RECORDS; G.L.O. SURVEYS

This map was prepared for Assessment & Taxation purposes only and was NOT prepared nor is it suitable for legal, engineering or surveying purposes.

Cancelled Tax Lots

- 100
- 200
- 201
- 300
- 301
- 900

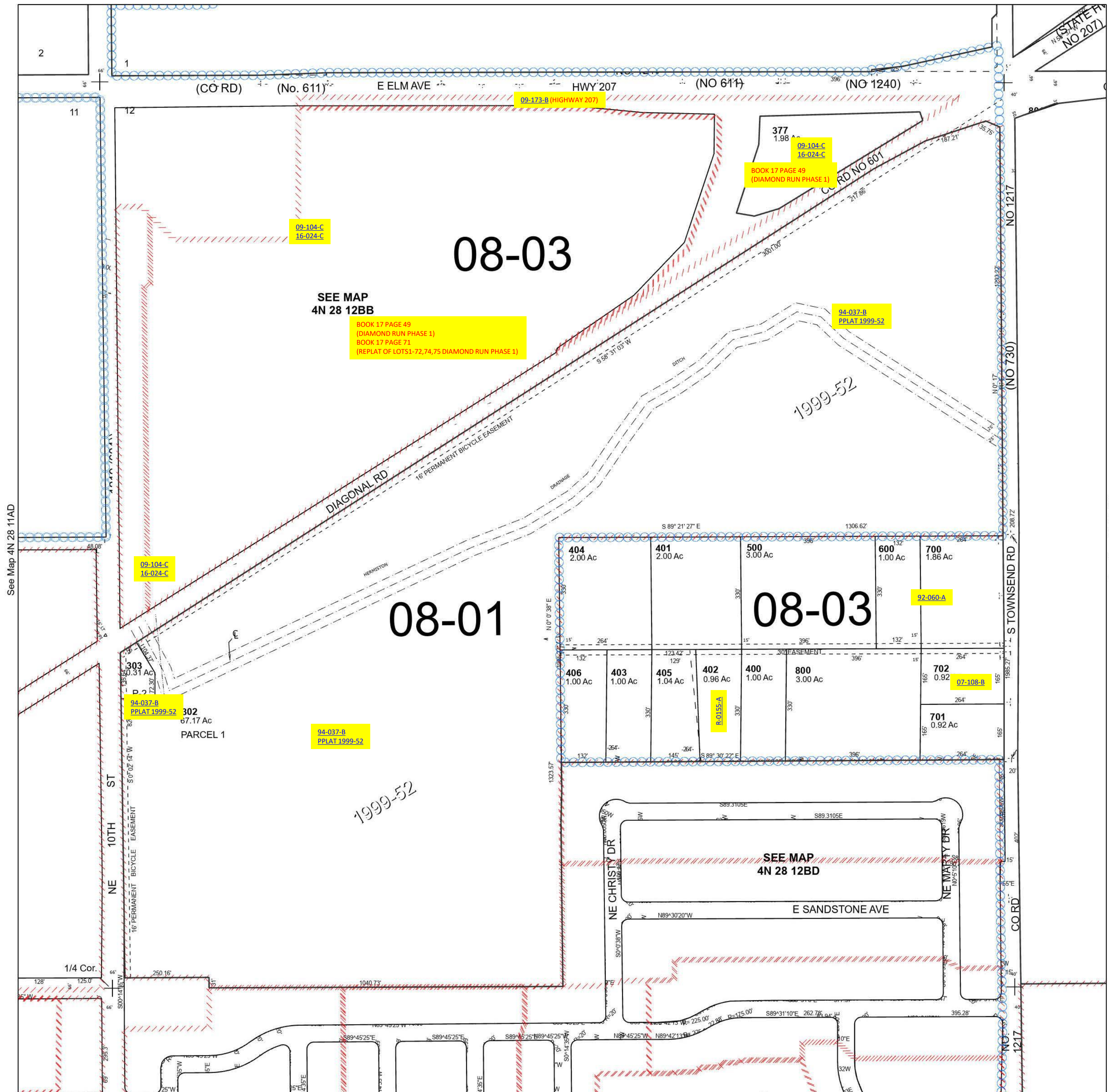
NW 1/4 SEC 12 T4N R28E WM UMATILLA COUNTY

4N 28 12B

Hermiston

SCALE 1" = 200'

See Map 4N 28 12BB



Revised 12/27/2023

See Map 4N 28 12CA

4N 28 12B