

ALSO SEE SURVEY 05-013-G

This map was prepared for Assessment & Taxation purposes only and was NOT prepared nor is it suitable for legal, engineering or surveying purposes.

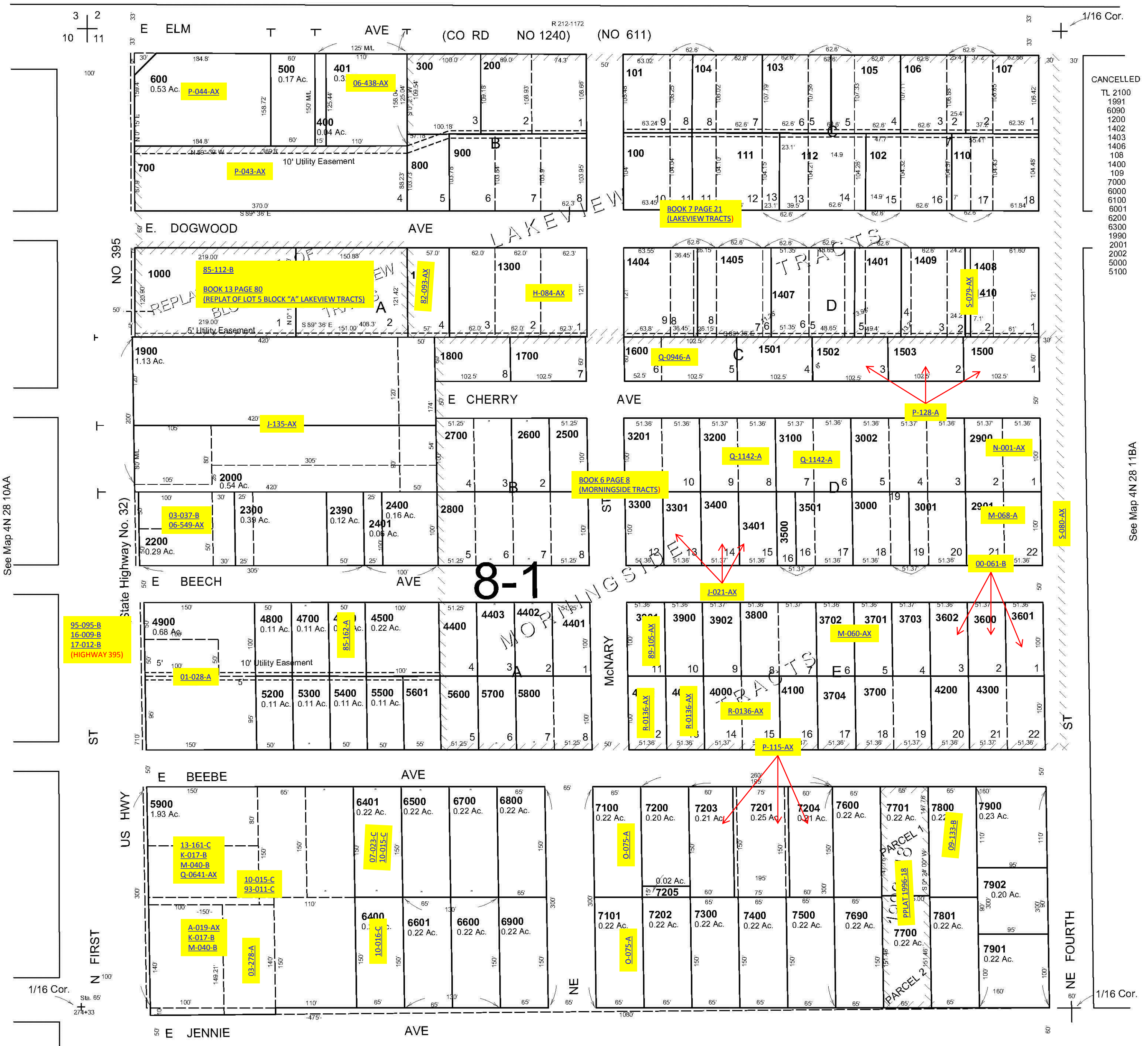
NW1/4 NW1/4 SEC 11 T4N R28E WM UMATILLA COUNTY

4N 28 11BB

AERIAL PHOTO NO. NZ 1P-123

SCALE 1"=100'

See Map 4N 28 2C



- CANCELLED
- TL 2100
 - 1991
 - 6090
 - 1200
 - 1402
 - 1403
 - 1406
 - 108
 - 1400
 - 109
 - 7000
 - 6000
 - 6100
 - 6001
 - 6200
 - 6500
 - 1990
 - 2001
 - 2002
 - 5000
 - 5100

See Map 4N 28 10AA

See Map 4N 28 11BA

95-095-B
16-009-B
17-012-B
(HIGHWAY 395)

8-1

Revised: 6/30/10

See Map 4N 28 11BC

4N 28 11BB