

THIS MAP WAS PREPARED FOR  
ASSESSMENT PURPOSES ONLY

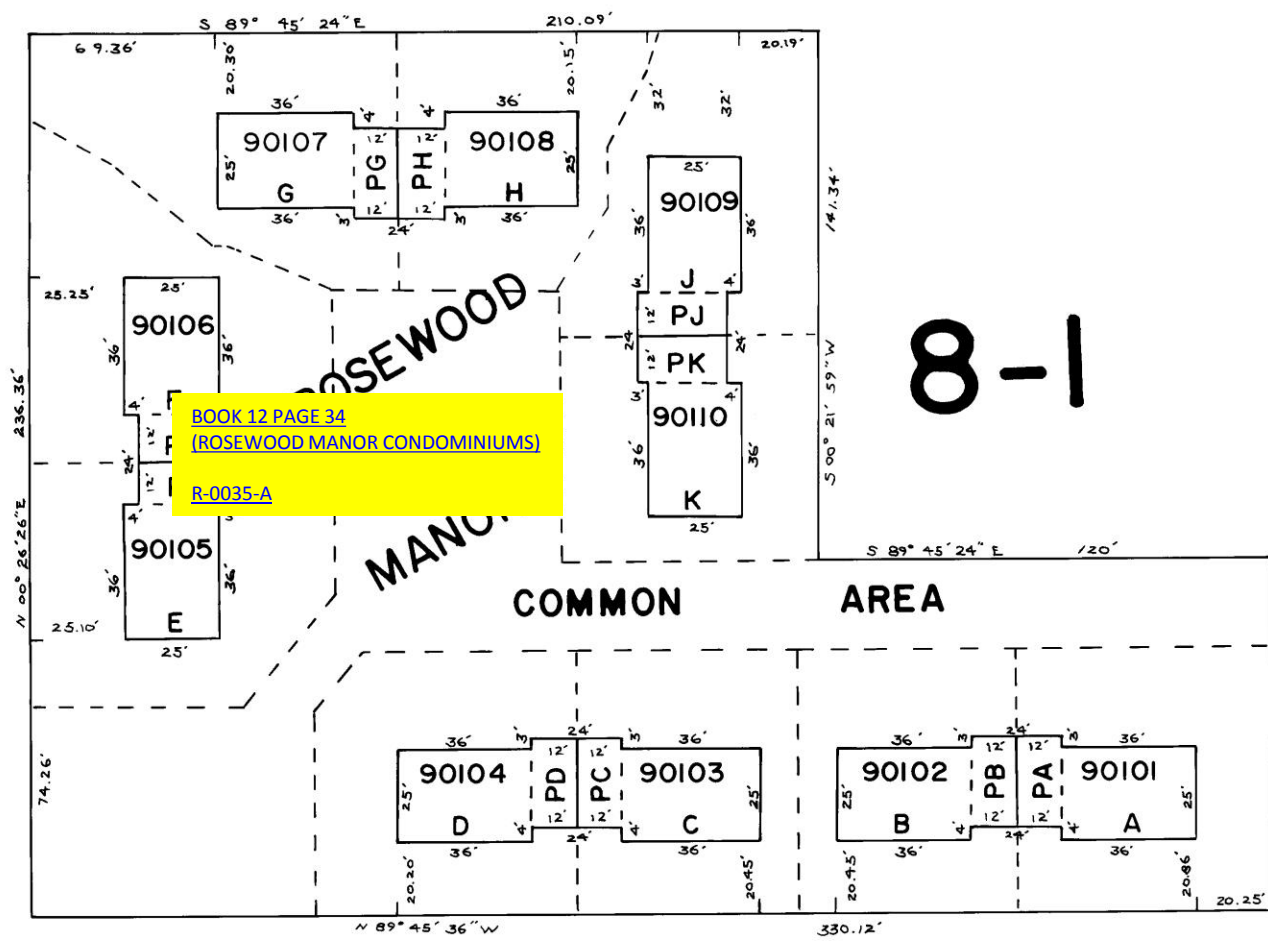
NW1/4 Sec.10 T.4N. R.28E.W.M.  
UMATILLA COUNTY

1" = 50'

4N 28 IOB  
Supplemental Map No.1  
ROSEWOOD MANOR

See Map 4N 28 IOB

See Map 4N 28 IOB



See Map 4N 28 IOB

--- Dashed lines denotes boundary of "Limited Common Areas"

Limited Common Area Acreages

A 0.08 Ac.  
B 0.07 Ac.  
C 0.07 Ac.  
D 0.08 Ac.  
E 0.07 Ac.  
F 0.10 Ac.  
G 0.09 Ac.  
H 0.06 Ac.  
J 0.08 Ac.  
K 0.07 Ac.

See Map 4N 28 IOB

4N 28 IOB  
Supplemental Map No.1