

This map was prepared for Assessment & Taxation purposes only and was NOT prepared nor is it suitable for legal, engineering or surveying purposes.

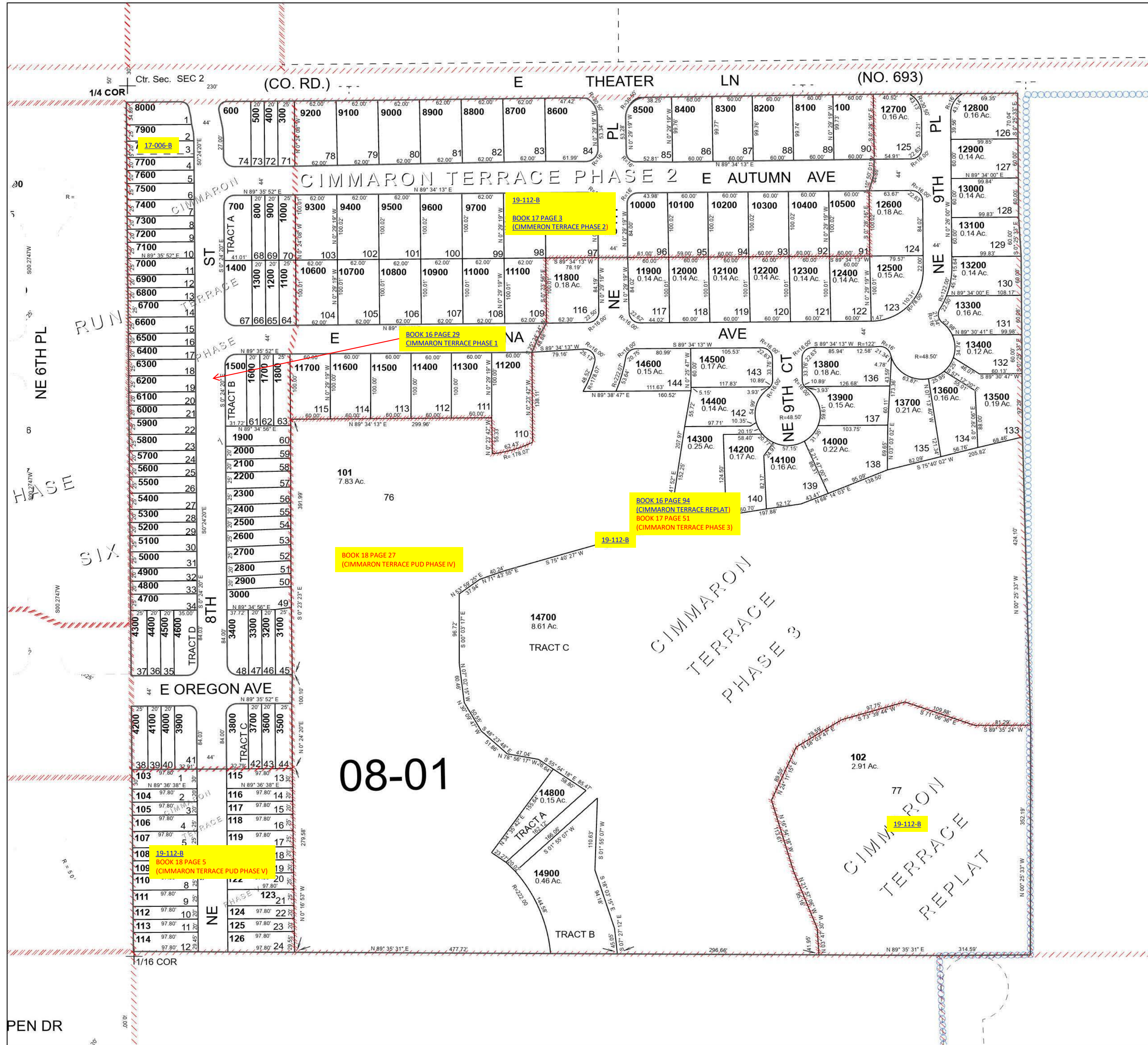
Cancelled Tax Lots
200

NW 1/4 SE 1/4 SEC 02 T4N R28E WM UMATILLA COUNTY SCALE 1" = 100'

Hermiston

4N 28 02DB

See Map 4N 28 02AC



See Map 4N 28 02CA

See Map 4N 28 02D

Revised 6/27/2023

See Map 4N 28 02D

4N 28 02DB