

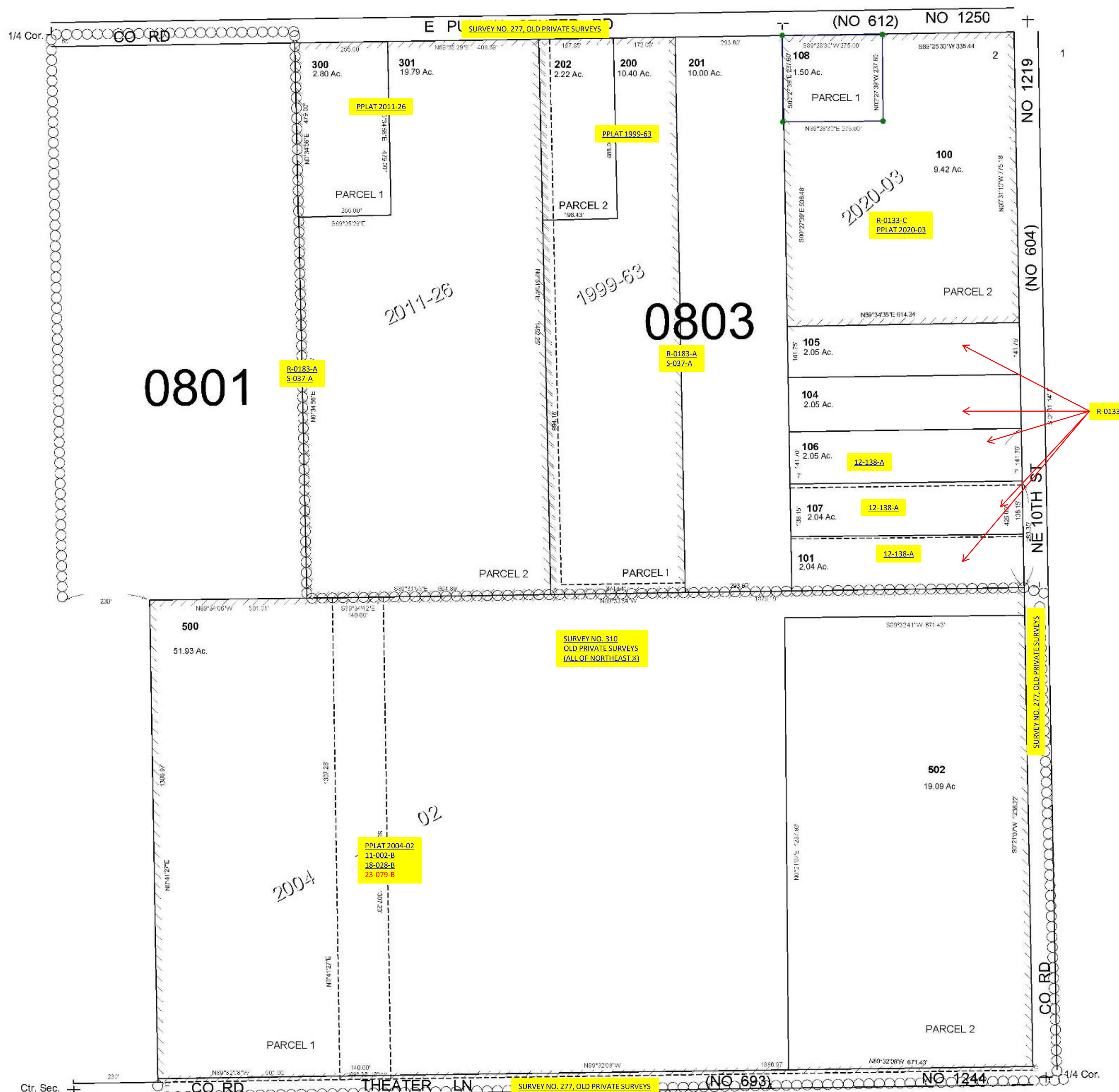
This map was prepared for Assessment & Taxation purposes only and was NOT prepared nor is it suitable for legal, engineering or surveying purposes.

NE1/4 SEC2 T4N R28E WM UMATILLA COUNTY

SCALE 1"=200'

4N2802A

AERIAL PHOTO NZ-1P-122



Revised: 02-25-20

4N2802A