

ALSO SEE SURVEYS 95-205-B; CORNER RECORDS; G.L.O. SURVEYS

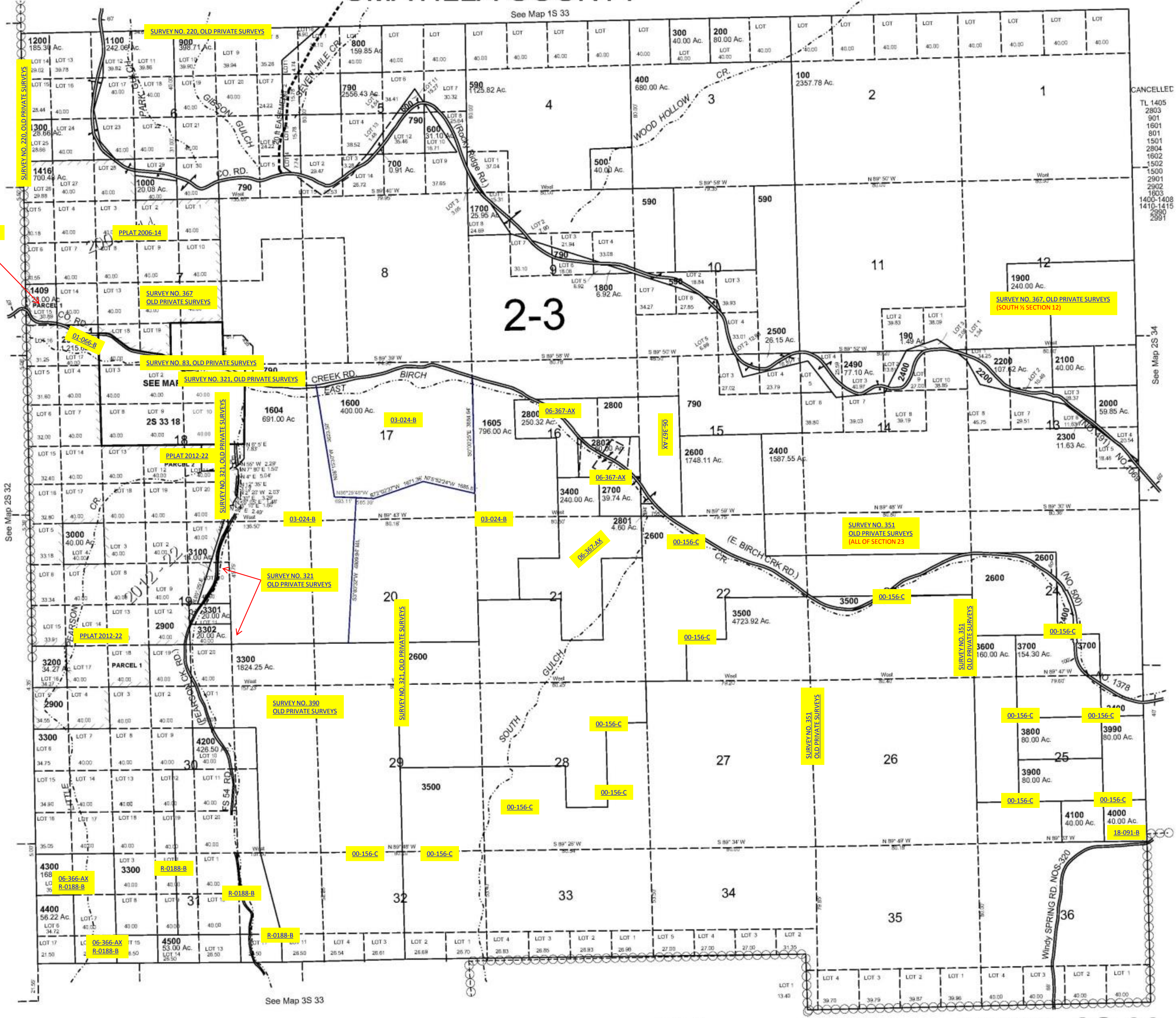
This map was prepared for Assessment & Taxation purposes only and was NOT prepared nor is it suitable for legal, engineering or surveying purposes.

1"=2000'

T2S R33E WM UMATILLA COUNTY

2S 33

AERIAL PHOTO NO. NZ 8P 15, 17 & 7P-155



CANCELLED
TL 1405
2803
901
1601
801
1501
2804
1602
1502
1500
2901
2902
1805
1400-1408
1410-1415
2890
2891

See Map 2S 34

See Map 2S 32

See Map 3S 33

UNION

COUNTY

Revised: 11/29/12

2S 33