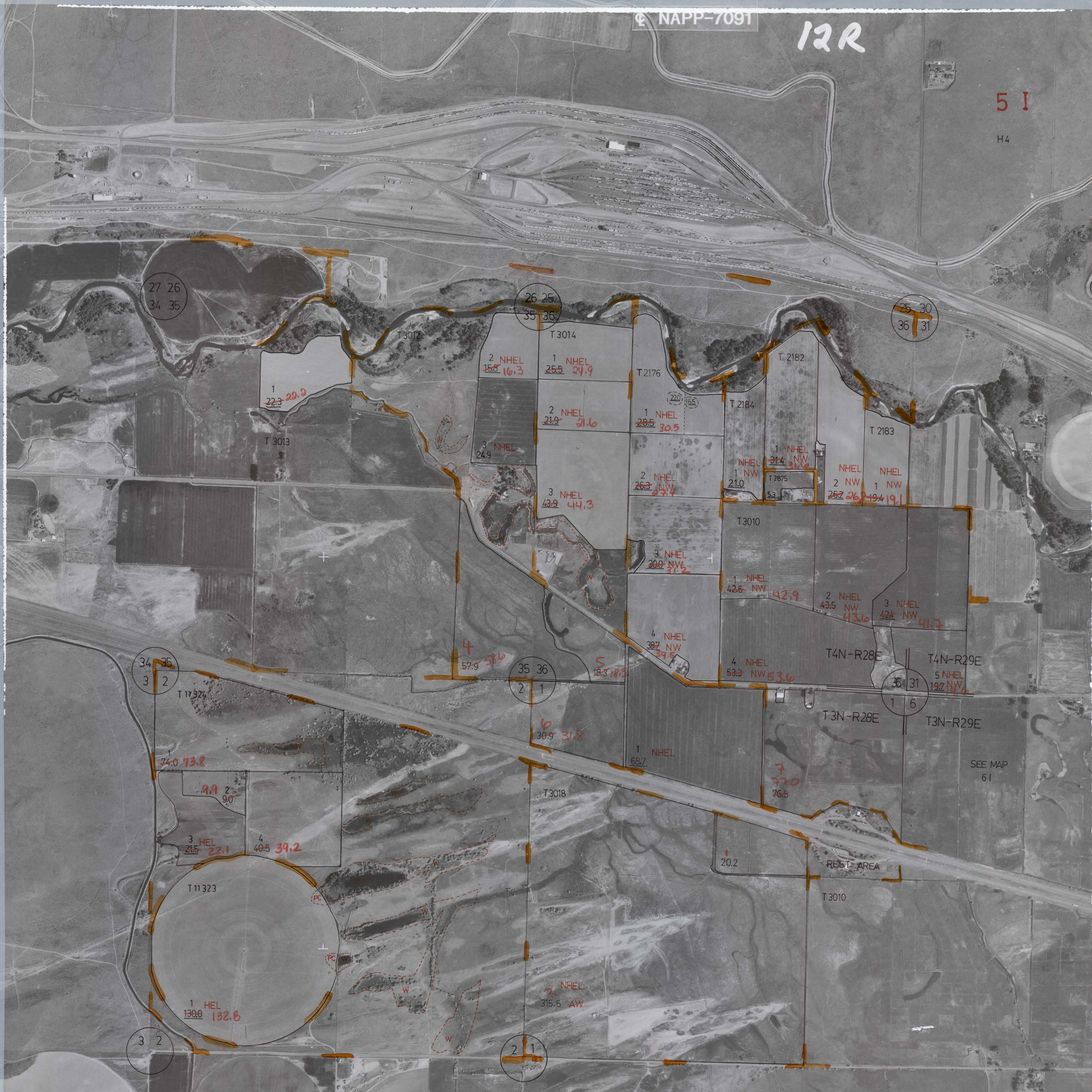


12R

5 I

H4



27 26  
34 35

26 25  
35 36

25 30  
36 31

34 35  
3 2

35 36  
2 1

35 31  
1 6

3 2

2 1

1  
22.3 28.2

2 NHEL  
15.8 16.3

1 NHEL  
25.5 39.9

1 NHEL  
28.5 30.5

1 NHEL  
31.4 31.6

NHEL  
26.2 26.4

NHEL  
19.4 19.1

3 NHEL  
24.9

3 NHEL  
43.9 44.3

2 NHEL  
26.3 27.4

1 NW  
21.0

2 NW  
26.2 26.4

1 NW  
19.4 19.1

3 NHEL  
43.9 44.3

3 NHEL  
30.0 31.2

1 NHEL  
42.6 42.9

2 NHEL  
43.5 43.6

3 NHEL  
42.4 41.7

4  
57.9 58.6

4 NHEL  
38.7 39.5

4 NHEL  
53.3 53.6

5 NHEL  
19.2 19.6

74.0 73.8

2  
9.9 9.0

3 HEL  
21.5 23.1

4  
40.5 39.2

T 11323

1 HEL  
130.0 132.6

T 3018

2 NHEL  
315.5 AW

1 NHEL  
68.7

7  
77.0 76.5

20.2

REST AREA

T 3010

SEE MAP  
61