

L3
2M-93
2M-91

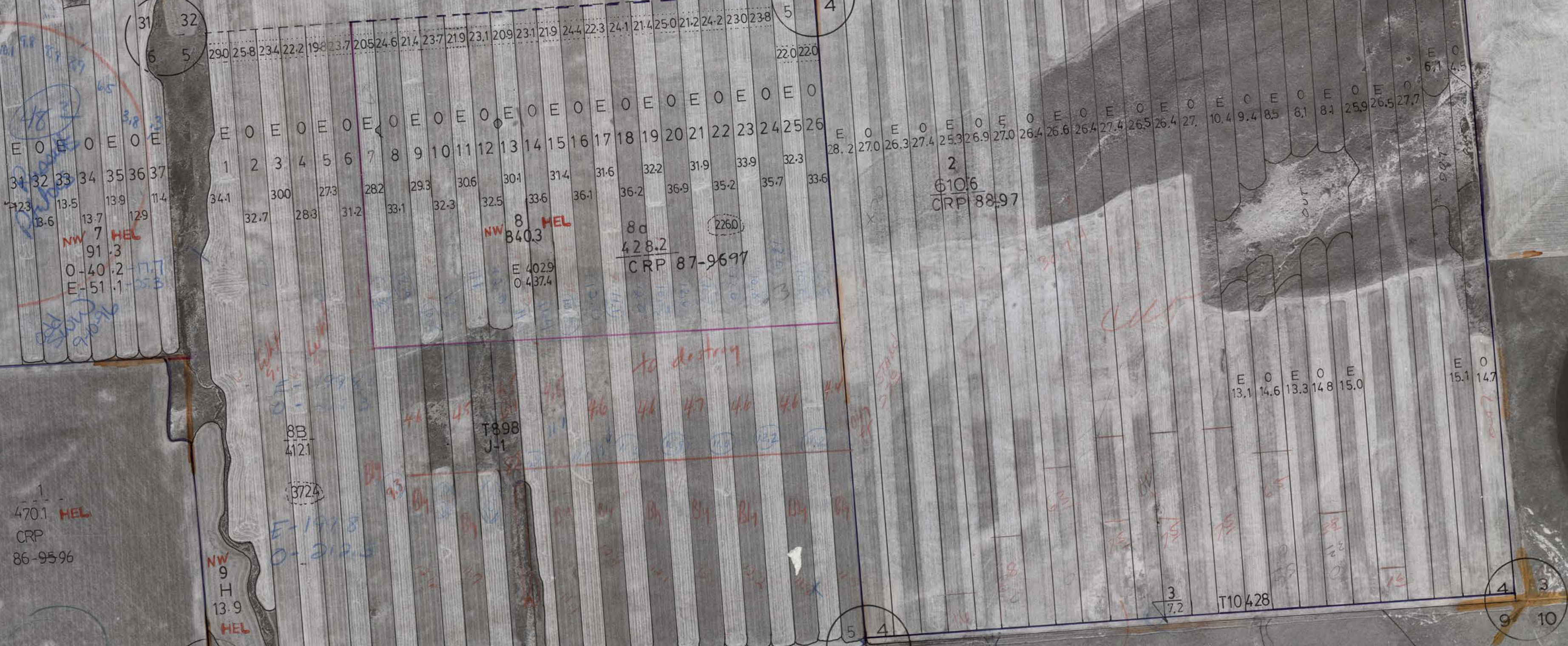
T898

T2N-R28E

J-1

55

593



T898
J-1

1592

1
470.1 HEL
CRP
86-9596

NW 9
H
13.9
HEL

T2292
J-296

6
5
7
8

L

10
162.6 NW

11 HEL
80.2 NW

12 HEL
85.6 NW

1
161.7 NHEL

T10761

2
98.5 NHEL

1
52.7 NHEL

7
238

T898
J-1

T10427

3
167.5 NHEL

41059-378

2
467.1 HEL
CRP
86-9596

13 NW
78.6

NW
14 HEL
82.7

NW
15
161.3

8
117

T11303

1790 T2292
J-296

T898
J-1

8 9
17 16