

H18

194
204
205

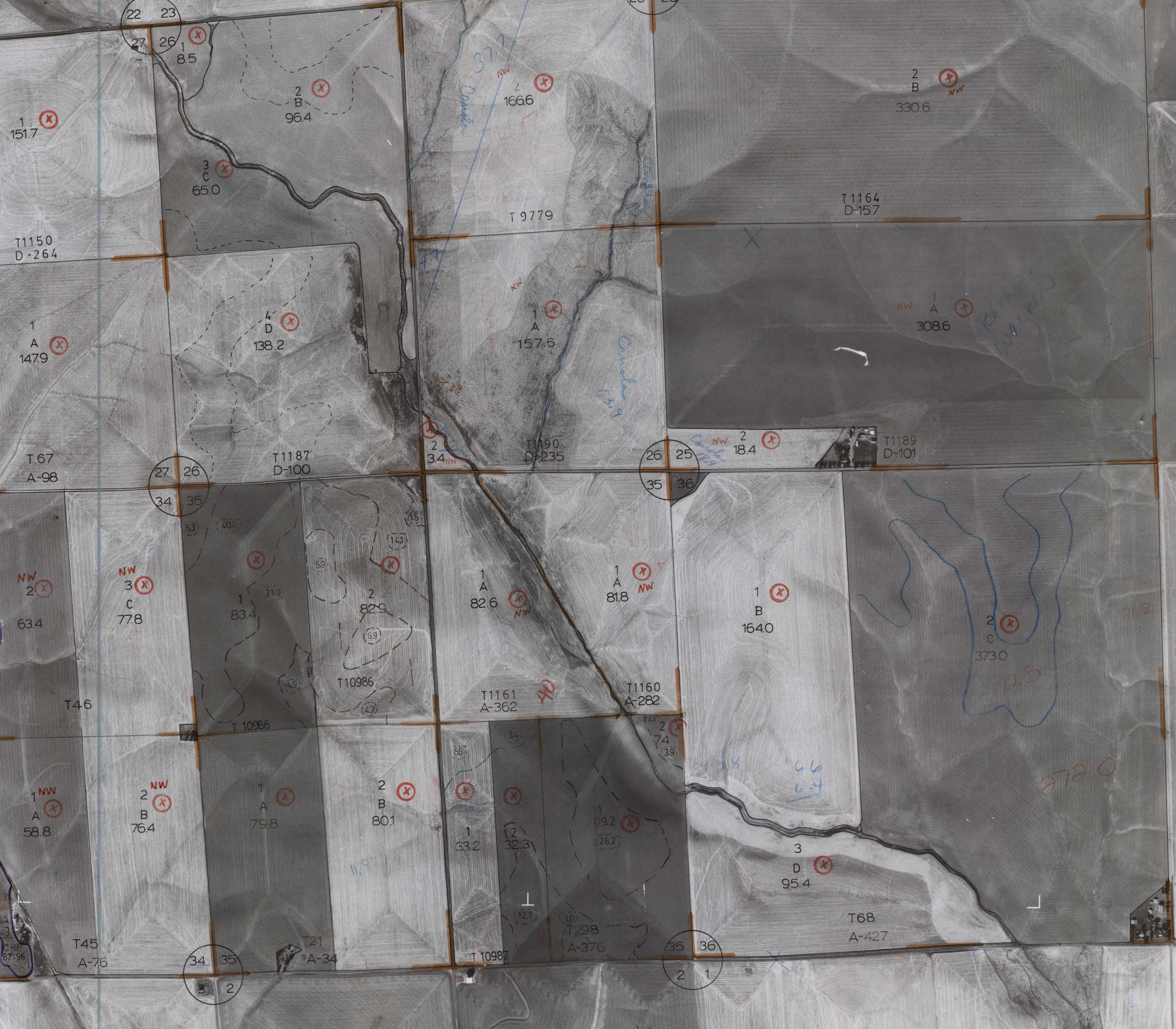
55

T4N-R33E

L

209

41059-378



1
A
151.7

2
B
96.4

3
C
65.0

2
1666

2
B
330.6

T1150
D-264

T 9779

T1164
D-157

1
A
147.9

4
D
138.2

1
A
157.6

1
A
308.6

T 67
A-98

T1187
D-100

T1190
D-235

T1189
D-101

NW 1
131
CRP
88-
97

NW 2
63.4

NW 3
C
77.8

1
83.4

2
82.9

1
A
82.6

1
A
81.8

1
B
164.0

T46

T 10986

T10986

T1161
A-362

T1160
A-282

1
NW
A
58.8

2
NW
B
76.4

1
A
79.8

2
B
80.1

1
33.2

12
32.3

99.2
(262)

3
D
95.4

T45
A-76

T21
A-34

T 10987

T298
A-376

T68
A-427

34 35
3 2

35 36
2 1