

R  
C15  
5M 139  
5M 167

226

41059-178

56

17C  
18C

35 36  
2 1

T6N-R32E 36 31  
T5N-R32E 1 6 T6N-R33E  
T5N-R33E

F  
880.8

G  
7  
723.6

E  
5  
213.1

D  
4  
35

CRP 87-9677

60 90

6

881

6b  
79.1

C  
3  
70.6

T1174  
D-83

D  
4  
38.9

T1214  
D-142

T1223  
D-155

T1202  
D-119

2 1  
11 12

1 6  
12 7

A  
1  
138.1

A  
1  
152.7

A  
1  
143.0

B  
2  
120.9

H  
8  
315.1

B  
2  
189.4

B  
2  
166.3

C  
3  
188.5

T1214  
D-142

T1126  
D-47

T1178  
D-233

T1202  
D-119

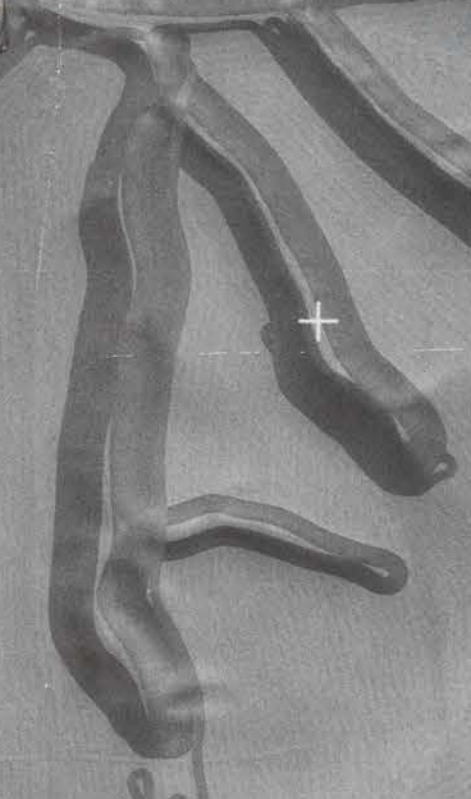
11 12  
14 13

12 7  
13 18

661

999

569.5



18.4

63.5

153.5

87.5

67.6

210

262

1020

106 SPRAY

2156

815 SPRAY

105.3

12.1 CAN

12.1

97.5  
141.8  
215.3

19.0  
15.6  
3.4