

TOWNSHIP 3 N., RANGE 37 E.W.M.

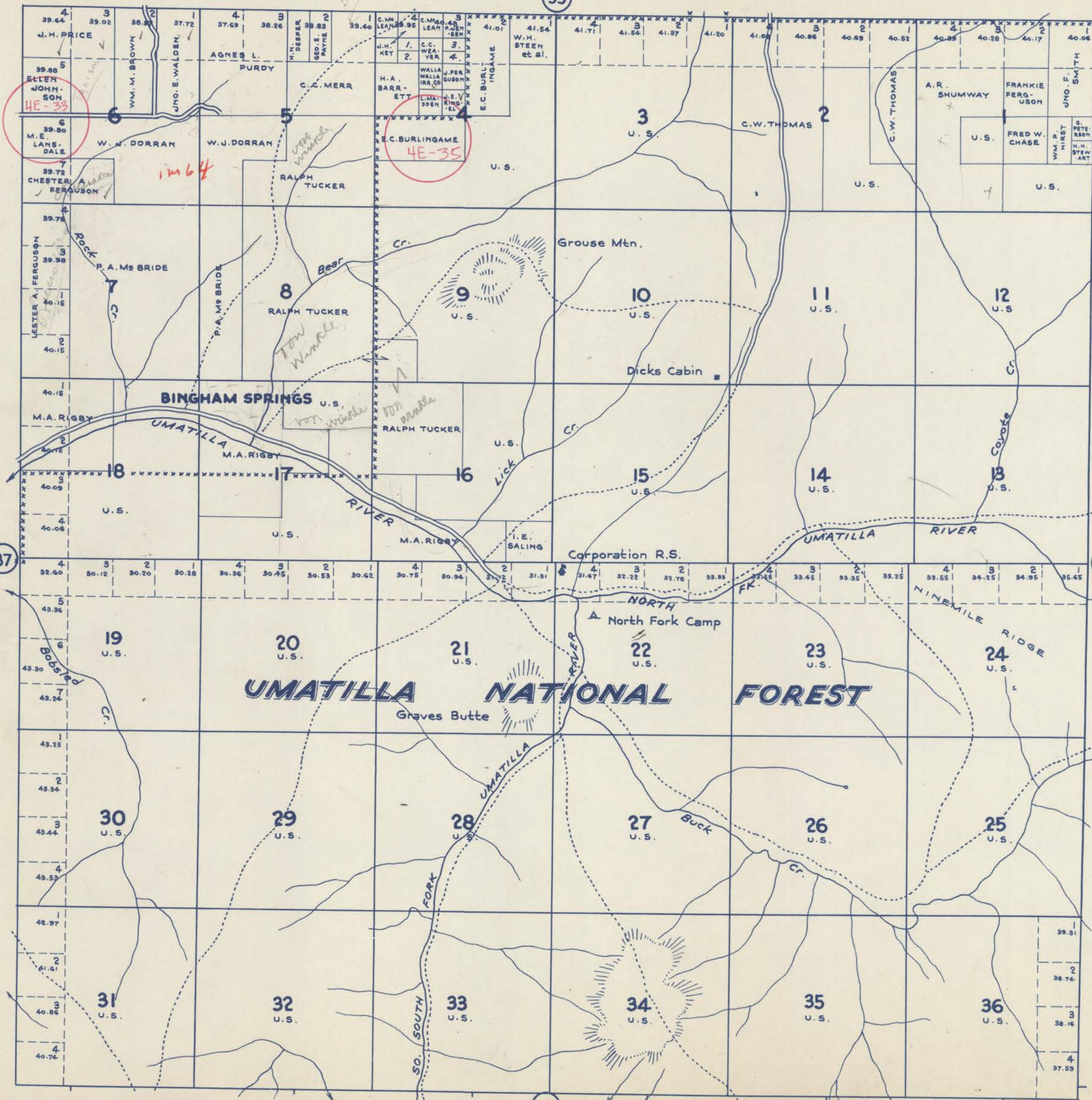
SCALE 2 IN. = 1 MILE.
DATED 1932

UMATILLA COUNTY OREGON

CHAS. F. METSKER CIVIL ENGINEER
215 COMMERCE BLDG., PORTLAND, ORE.
930 1/2 PACIFIC AVE., TACOMA, WASH.

93

- 1. J.M. O'HARA
- 2. JAY HOLMAN
- 3. U.W. HYATT
- 4. W.H. SINGER



COPYRIGHT BY CHAS. F. METSKER

95

- LEGEND -
- PAVED ROADS
 - STATE HIGHWAYS
 - MARKET ROADS
 - DIRT ROADS
 - INFERIOR ROADS
 - RAILROADS
 - TRAILS
 - INTERMITTENT CREEKS
 - SCHOOLS

5