

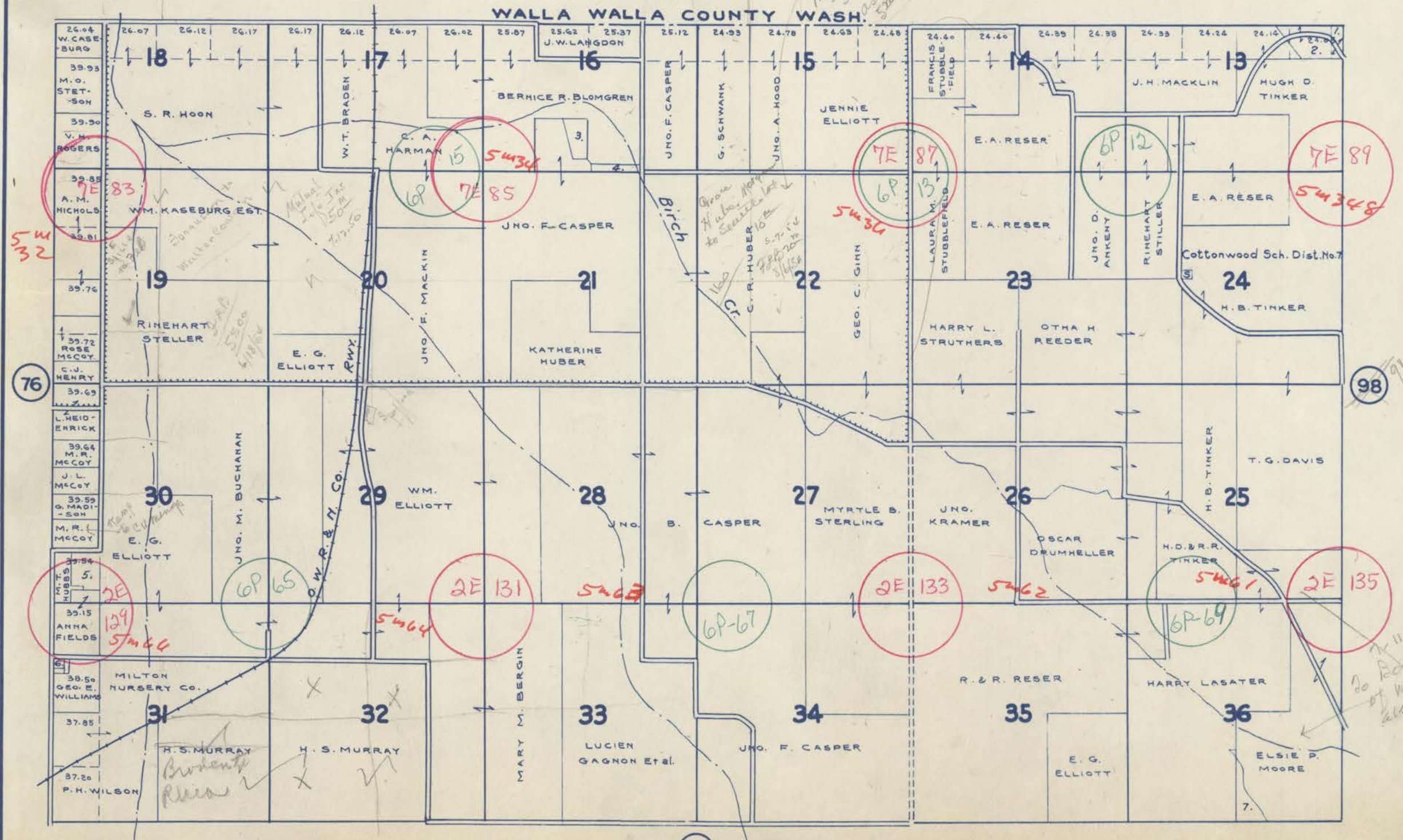
TOWNSHIP 6 N., RANGE 36 E.W.M.

UMATILLA COUNTY OREGON

SCALE 2 IN. = 1 MILE.
DATED 1932

CHAS. F. METSKER CIVIL ENGINEER
215 COMMERCE BLDG, PORTLAND, ORE.
930 1/2 PACIFIC AVE., TACOMA, WASH.

*Money paid to
Martin Huber & Co.
\$59,500.00
\$20,000.00
\$39,500.00
\$20,000.00
\$19,500.00*



- 1-JNO. A. DAVIS EST.
- 2-C. L. SWEZEK
- 3-E. L. BLOMGREN
- 4-JNO. F. CASPER ET AL.
- 5-DAN COLLEY
- 6-WM. TIMMONS
- 7-E. G. ELLIOTT

*7-11-58
20 Board of Trustees
of Umatilla College
also see Sec 31-6 N-27*

-LEGEND-

- PAVED ROADS
- STATE HIGHWAYS
- MARKET ROADS
- DIRT ROADS
- INFERIOR ROADS
- RAILROADS
- TRAILS
- INTERMITTENT CREEKS
- SCHOOLS