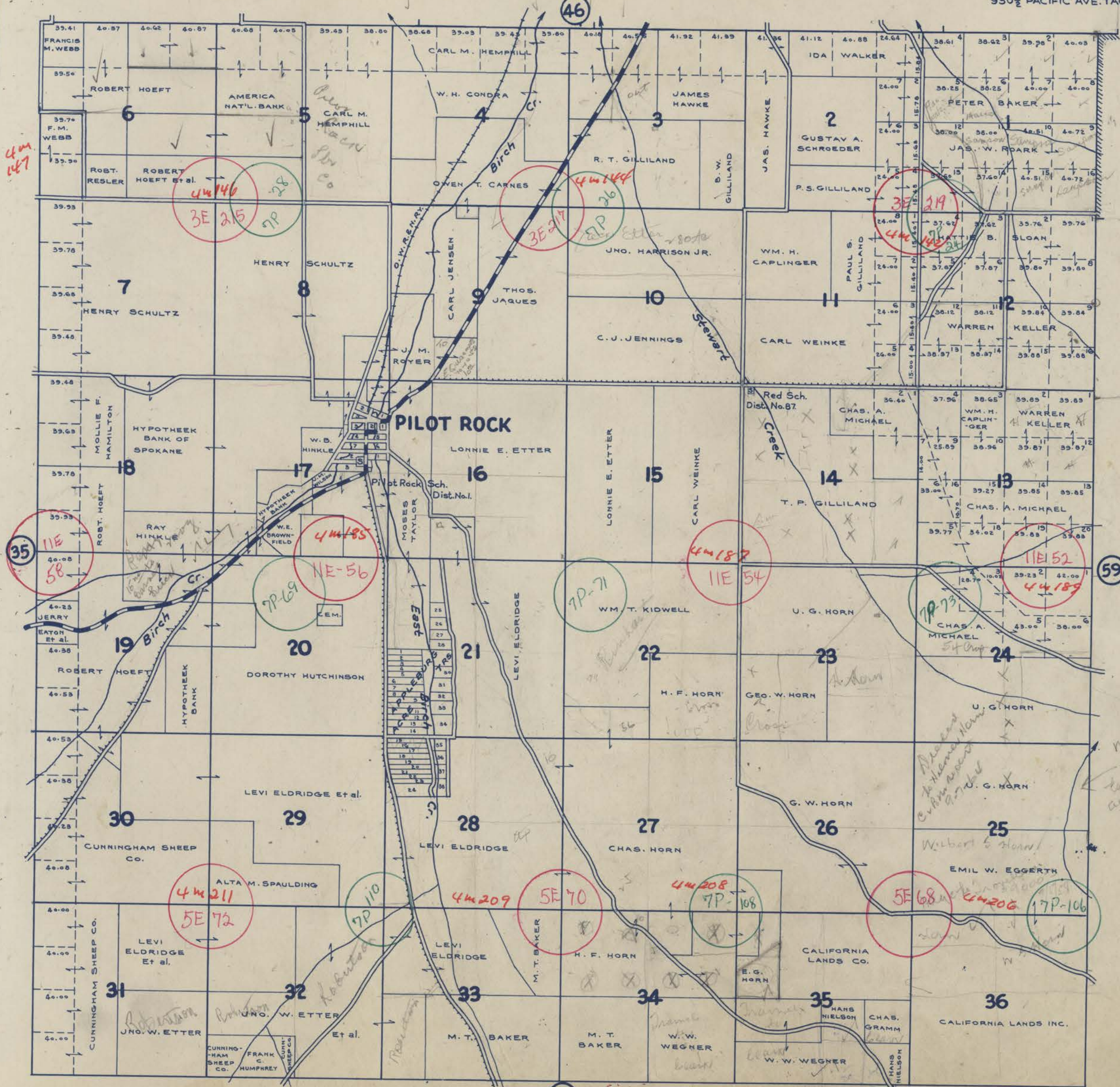


# TOWNSHIP 1 S., RANGE 32 E.W.M. UMATILLA COUNTY OREGON

SCALE 2 IN. = 1 MILE.  
DATED 1932

CHAS. F. METSKER CIVIL ENGINEER  
215 COMMERCE BLDG. PORTLAND, ORE.  
930 1/2 PACIFIC AVE. TACOMA, WASH.

APPLEBURG  
ACRE TRACTS  
LOT 110, 25 TO 32 -  
LEVI ELDRIDGE  
8702, 33884, E 1/4 10614 -  
PATRICK CASSIDAY  
W 1/4 1314, 15 - 1/4 10625  
16 - STELLA M. NOBLE  
BAL TO - HARTMAN  
ABSTRACT CO.



-LEGEND-

- PAVED ROADS
- STATE HIGHWAYS
- MARKET ROADS
- DIRT ROADS
- INFERIOR ROADS
- RAILROADS
- TRAILS
- INTERMITTENT CREEKS
- SCHOOLS

*Wilbert Horn  
Barns mtgs  
to Salmer place  
Aug 1925*