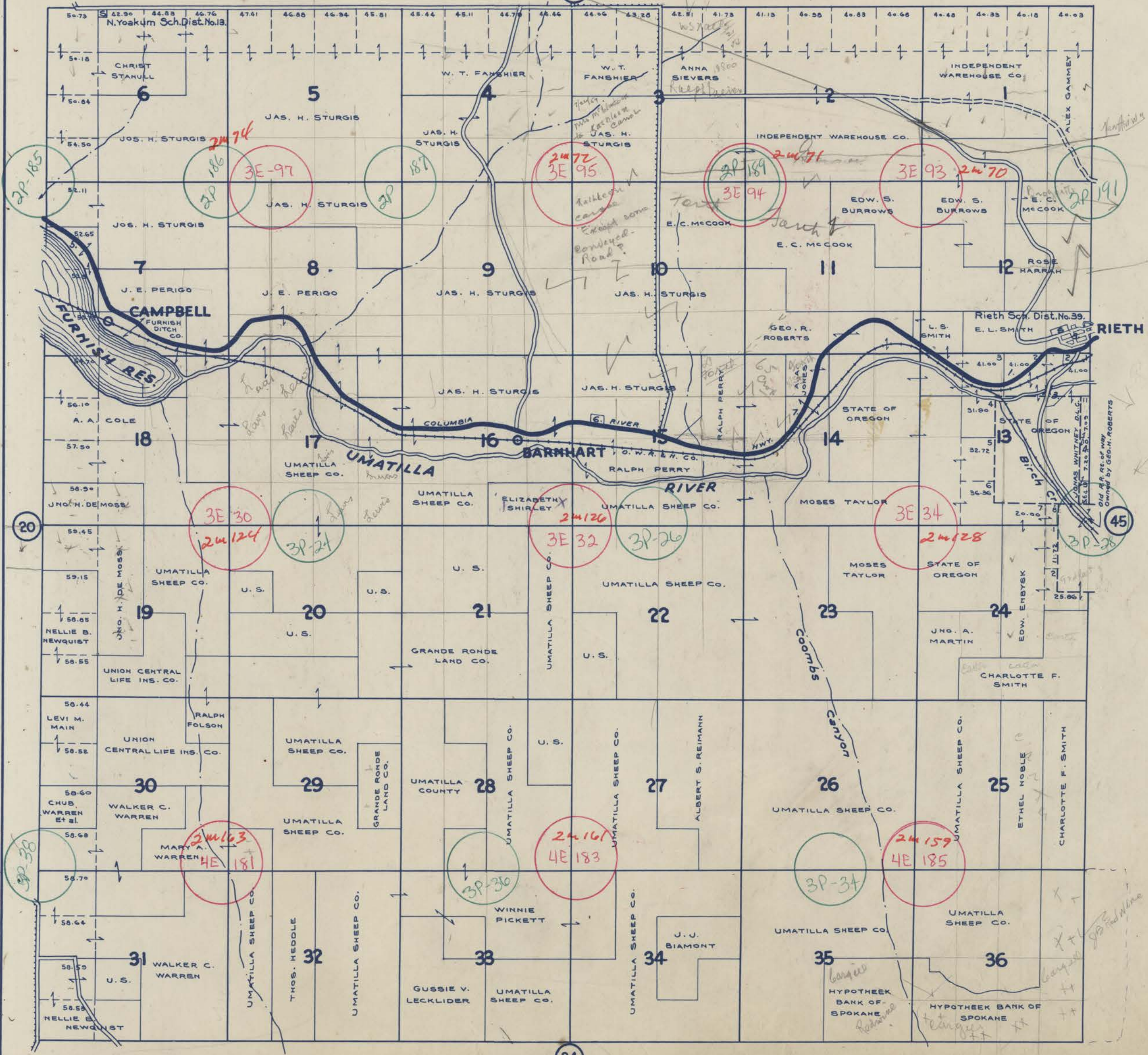


# TOWNSHIP 2 N., RANGE 31 E.W.M. UMATILLA COUNTY OREGON

SCALE 2 IN. = 1 MILE.  
DATED 1932

CHAS. F. METSKER CIVIL ENGINEER  
215 COMMERCE BLDG. PORTLAND, ORE.  
930 1/2 PACIFIC AVE. TACOMA, WASH.



- 1-G. R. ROBERTS
- 2-E. L. SMITH
- 3-U. M. HARRISON
- 4-EDW. ENBYSK
- 5-FURNISH DITCH CO.
- 6-STATE OF OREGON
- 7-G. E. DERMIS
- 8-GEANAKOPOULOS ADD.

107 cover

- LEGEND-**
- PAVED ROADS
  - STATE HIGHWAYS
  - MARKET ROADS
  - DIRT ROADS
  - INFERIOR ROADS
  - RAILROADS
  - TRAILS
  - INTERMITTENT CREEKS
  - SCHOOLS