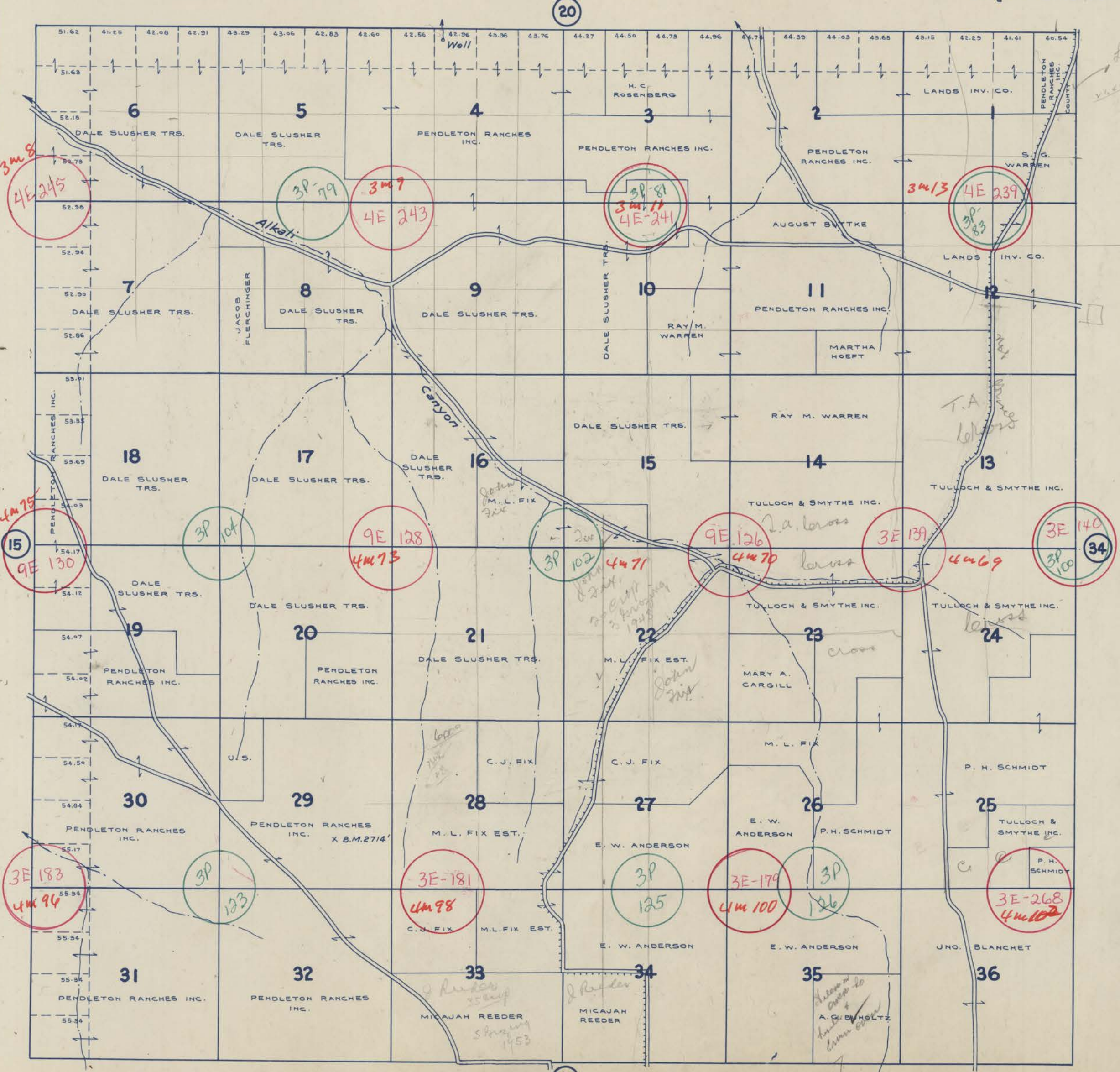


TOWNSHIP 1 N., RANGE 30 E.W.M. UMATILLA COUNTY OREGON

SCALE 2 IN. = 1 MILE.
DATED 1932

CHAS. F. METSKER CIVIL ENGINEER
215 COMMERCE BLDG. PORTLAND, ORE.
930 1/2 PACIFIC AVE. TACOMA, WASH.

63
32
21



*Leaves
Pendleton Co*

58
31
19

- LEGEND -**
- PAVED ROADS
 - STATE HIGHWAYS
 - MARKET ROADS
 - DIRT ROADS
 - INFERIOR ROADS
 - RAILROADS
 - TRAILS
 - INTERMITTENT CREEKS
 - SCHOOLS