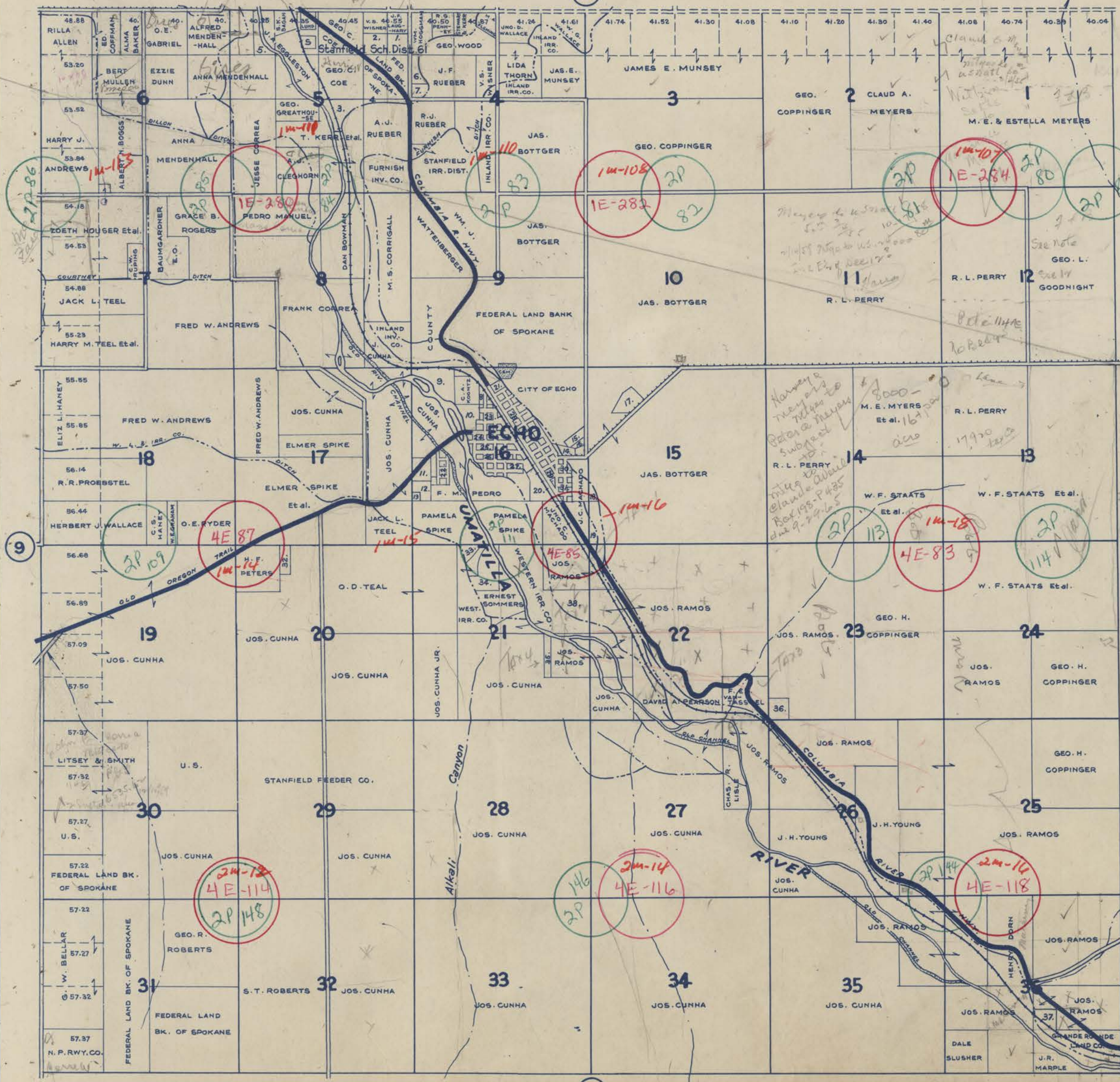


TOWNSHIP 3 N., RANGE 29 E.W.M. UMATILLA COUNTY OREGON

SCALE 2 IN. = 1 MILE.
DATED 1932

CHAS. F. METSKER CIVIL ENGINEER
215 COMMERCE BLDG. PORTLAND, ORE.
930 1/2 PACIFIC AVE. TACOMA, WASH.



- 1- ELLA M. HOWARD
- 2- LILLIAN D. WISNER
- 3- FURNISH INV. CO.
- 4- " " " "
- 5- JOSEPH HOUSER
- 6- GEO. R. JOHNSTON
- 7- LILLIAN D. WISNER
- 8- FRANK M. PEDRO
- 9- ANNA M. YOUNG
- 10- RAY HALE ESQ.
- 11- W. J. WATTENBURGER
- 12- FRANK M. PEDRO
- 13- PAMELA SPIKE
- 14- A. A. SIMON
- 15- CLYDE SCRIVNER
- 16- SAM SMITH
- 17- EDW. LIESEGANG
- 18- STANFIELD IRR. DIST.
- 19- JOE C. MACHADO
- 20- BEN H. GASKILL
- 21- J. CUNHA
- 22- WEST LAWN ADD.
- 23- KOONTZ ADD.
- 24- ORIGINAL TOWN
- 25- BRASSFIELDS ADD.
- 26- HALSTEAD'S ADD.
- 27- " " 2ND
- 28- KOONTZ 2ND
- 29- HALSTEAD'S 2ND ADD.
- 30- GULLIFORDS ADD.
- 31- WHITWORTHS
- 32- ECHO ROD & GUN CLUB
- 33- ERNEST SOMMERS
- 34- " " " "
- 35- JOSEPH RAMOS
- 36- FURNISH DITCH CO.
- 37- " " " "
- 38- JNO. C. MACHADO

- LEGEND -

- PAVED ROADS
- STATE HIGHWAYS
- MARKET ROADS
- DIRT ROADS
- INFERRIOR ROADS
- RAILROADS
- TRAILS
- INTERMITTENT CREEKS
- SCHOOLS