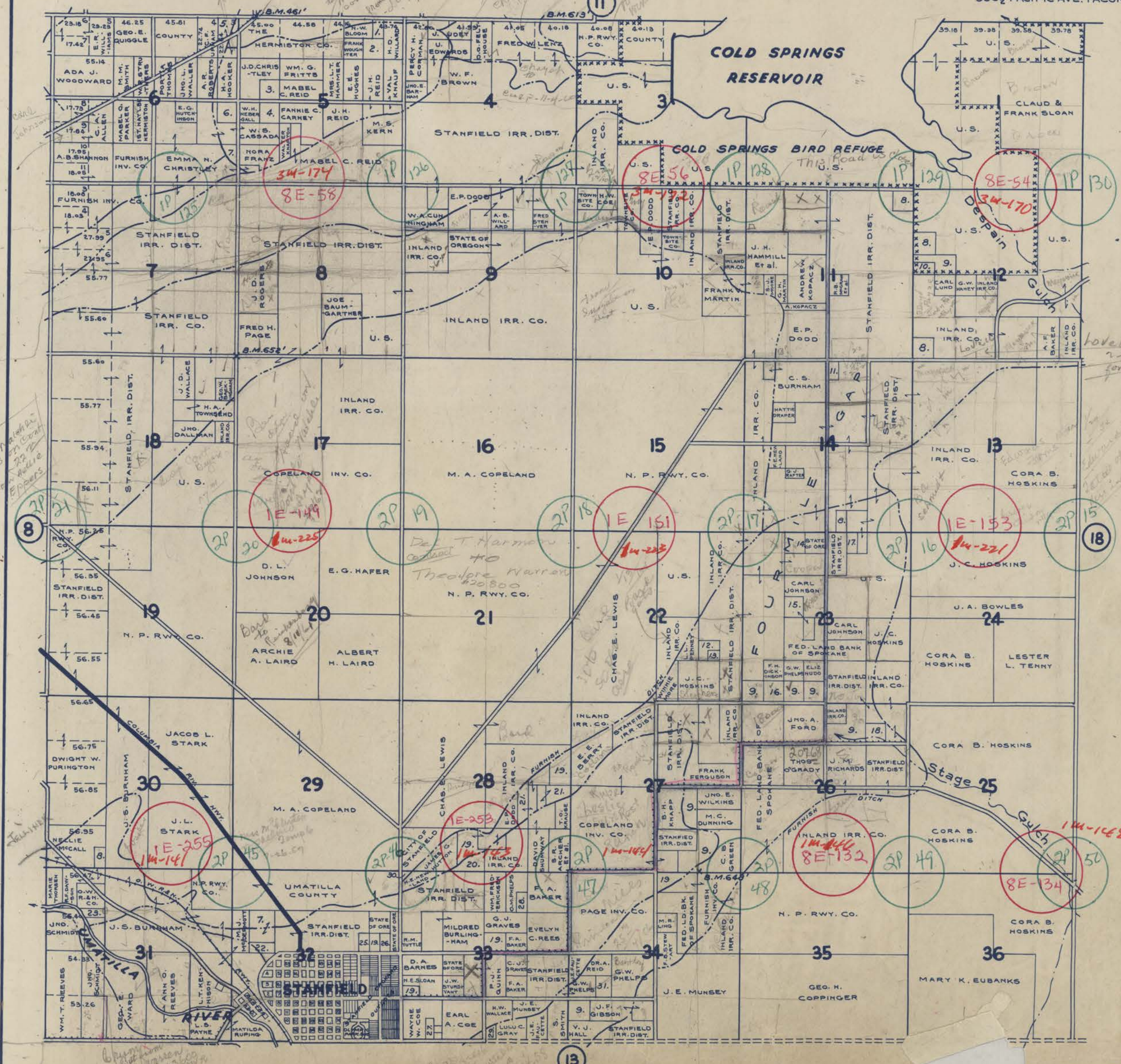


TOWNSHIP 4 N., RANGE 29 E.W.M. UMATILLA COUNTY OREGON

SCALE 2 IN. = 1 MILE.
DATED 1932

CHAS. F. METSKER CIVIL ENGINEER
215 COMMERCE BLDG. PORTLAND, ORE.
930 1/2 PACIFIC AVE. TACOMA, WASH.



- 1-GEO. W. LIEBE
- 2-FORT WAYNE FRUIT CO.
- 3-PAUL M. MILLER
- 4-U.S. ARBERS ET AL.
- 5-MABEL L. HURST
- 6-HILDRED DANNER
- 7-WM. A. LEATHERS
- 8-UMATILLA COUNTY
- 9-FED. LD. BANK OF SPOKANE
- 10-HOWARD C. DUNK
- 11-C. H. MAERCKLIN
- 12-D. PENNEY
- 13-EMMA M. PENNEY
- 14-THOS. MULLIGAN
- 15-ANNIE WEBSTER ET AL.
- 16-U.S. HOSKINS
- 17-H.F. CHAFFEE CO.
- 18-STANFIELD IRR. DIST.
- 19-D.L. JOHNSON
- 20-GOTTLIEB KURRLE
- 21-LEATHERS & LITTLE
- 22-O. M. WOODIER
- 23-L.F. WOOSTER ET AL.
- 24-U.S. GIOYNNIE
- 25-TOWNSITE CO.
- 26-D.M. PHELPS
- 27-MARY A. HUTTON
- 28-L.C. GRAY
- 29-INLAND IRR. CO.
- 30-W.U. EDWARDS

*Novell wanted a loan of \$4500
2-15-37 - hand has not been paid
for 24 or 25*

Probable

PAV
ST
MAR.
DIRT
INFEP
RA
TR
IN
CHO